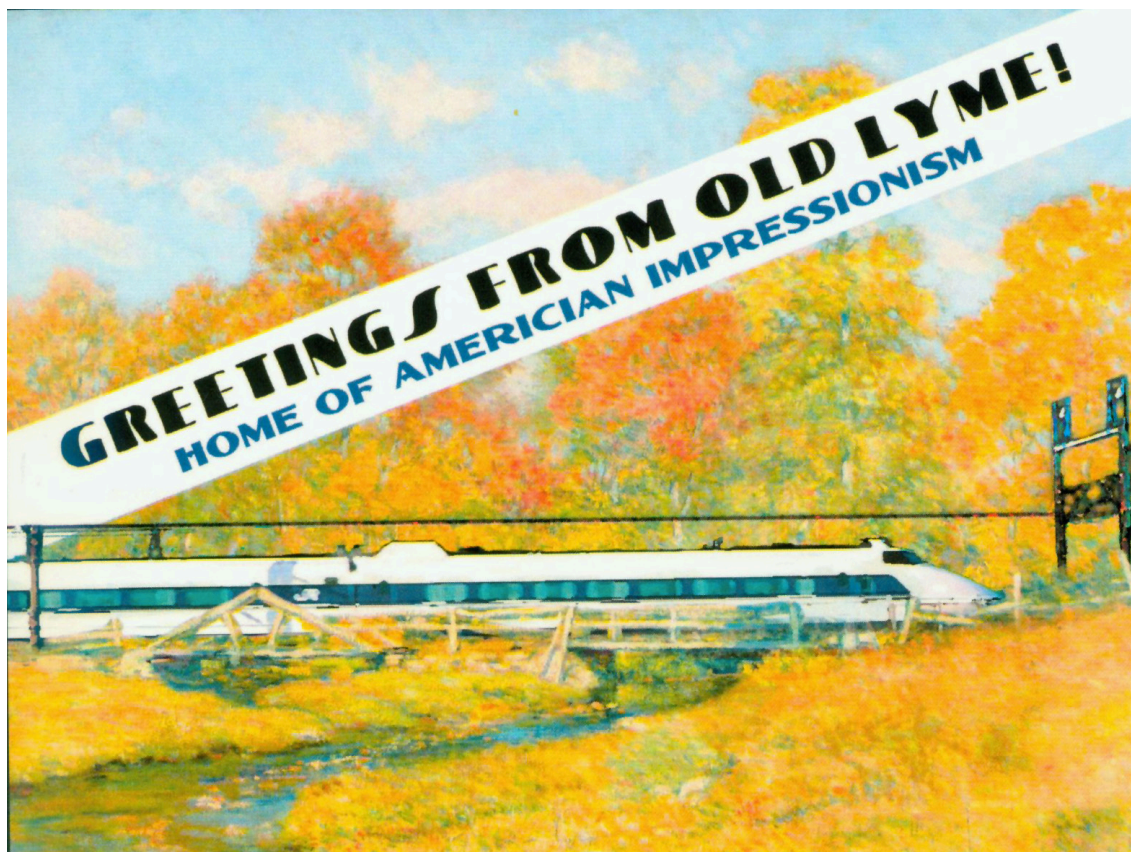


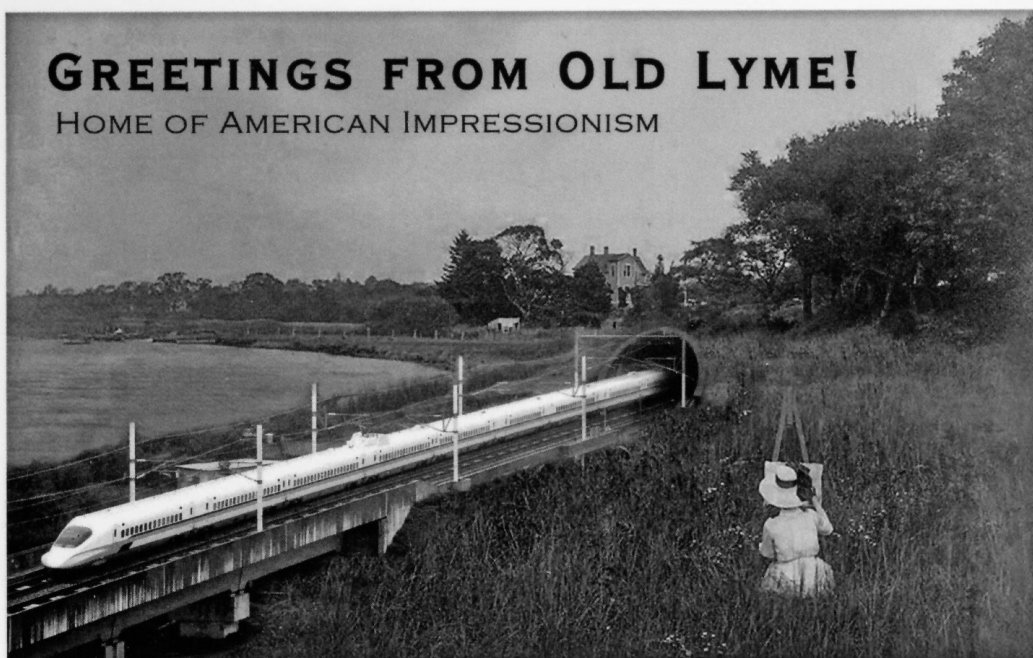


ANNUAL REPORT
2016-2017
Old Lyme, Connecticut



GREETINGS FROM OLD LYME!

HOME OF AMERICAN IMPRESSIONISM



IF YOU LOVE OLD LYME, YOU'LL LOVE OUR NEW TUNNEL!

ANNUAL REPORT

OLD LYME, CONNECTICUT



New London County
2nd Congressional District
20th Senatorial District
23rd Assembly District

2016-2017

Front, Back, and Inside Front Covers:

Created by Robin Breeding for SECoast

Robin Breeding lives in Old Lyme, where she runs a small design studio.

Her work runs the gamut from traditional gilding to digital media.

You can find her at breedingandstroud.com.

Published by the Old Lyme Board of Finance, Andy Russell, Chairman

Compiled and Edited by Michele S. Dickey

With Gratitude to Selectman's Office Executive Assistant Catherine Frank

for her help in compiling this material;

to Selectman's Office Manager Michele E. Hayes and Mike Dickey

for Production Assistance; and to Lauren D. Girasoli for Proofreading.

*Typesetting and Printing by Quality Printers,
15 Shaw Street, New London, CT 06320*

Activities of the Old Lyme Tree Commission (pg 57)



Planters' Choice Nursery delivers trees. Bartlett Tree Experts prepare to offload them.



A new European hornbeam enhances the landscape on Ferry Road.



Preparing the red maple tree for planting on Lyme Street.

Contents

Selectwoman's Report	2
Editor's Musings on the High-Speed Train Threat	5
ADA Committee	6
Appointed Officials	9
Assessor	22
Board of Finance	22
Building Department	23
Citizen of the Year	24
Commission on Aging	25
Connecticut River Gateway Commission	26
Conservation Commission	27
Deaths	20
Elected Officials	7
Election Results	15
Emergency Management	28
Emergency Management Special Needs Registration Form	74
Estuary Transit District	29
Facilities Management	30
Fire Marshal	31
Florence Griswold Museum	31
Harbor Management Commission	33
Historic District Commission	34
Ledge Light Health District	35
Legislators	17
Lyme-Old Lyme Chamber of Commerce	36
Lyme-Old Lyme Education Foundation	37
Lyme-Old Lyme High School	39
Lyme-Old Lyme VFW Post 1467	41
Lymes' Senior Center	42
Lymes' Youth Service Bureau	43
MacCurdy Salisbury Educational Foundation, Inc	45
Marriages	18
Municipal Agent for the Elderly	46
Old Lyme Animal Control	46
Old Lyme Area Cable Advisory Council	47
Old Lyme Emergency Medical Service	48
Old Lyme Fire Department	49
Old Lyme Historical Society, Inc	50
Old Lyme Inland Wetlands and Watercourses Commission (IWWC)	52
Old Lyme Parks and Recreation	53
Old Lyme - Phoebe Griffin Noyes Library	54
Old Lyme Police	55
Old Lyme Shellfish Commission	56
Old Lyme Social Services	56
Old Lyme Tree Commission	57
Old Lyme Visiting Nurse Association, Inc	58
Open Space Commission	58
Organization Chart	16
Planning Commission	59
Region #18 Lyme-Old Lyme Public Schools ..	60
Registrars of Voters	62
RiverCOG	63
Rogers Lake Authority	64
Tax Collector	65
Town Meetings	65
Town Staff	14
Treasurer	69
Water Pollution Control Authority	70
Zoning Board of Appeals	71
Zoning Commission	72

Selectwoman's Report

Bonnie Reemsnyder

First Selectwoman

Fiscal Year 2016 – 2017 will likely be remembered as the **Year of the Train that Never Was!** As the year began, most of our residents were full of anxiety about the proposed bypass for high-speed rail that would run from Old Saybrook, CT to Kenyon, RI, with initial plans of an aerial structure right over the heart of our historic, commercial, and cultural district. The agreement of the Federal Railroad Administration (FRA) to build a tunnel rather than an aerial structure did little to allay these concerns, thus the outcry continued. On August 31, 2016, the NEC Future team traveled to Old Lyme for a roundtable discussion with First Selectmen from Old Saybrook to Stonington, the Mayor of New London, local state legislators, Congressman Courtney, Senator Blumenthal, and DOT Commissioner Jim Redeker. The Lyme-Old Lyme High School auditorium was full to capacity, the audience attentive to the questions and answers about the NEC Future plan, all in the hopes that the team from the FRA would understand the impact of this plan on our communities. Those hopes were dashed when, on December 16, 2016, the Final Environmental Impact Statement was released with the bypass still in the plan.

It was then that our community's resolve strengthened; we were determined to do all we could to educate those in DC what was at stake for our small town. Not only did our residents continue to send comments expressing their dismay, but other shoreline towns also joined the fight, including many in Rhode Island, which was negatively impacted by the plan as well. Through numerous discussions with our DOT Commissioner and our Congressional delegates, there was hope that the Record of Decision (ROD), which would be the final document, would have the bypass removed from the plan. On July 12, 2017 (12 days after the fiscal year's end), the Record of Decision was released and the bypass had been removed from the plan! A great sigh of relief was felt in our small community, and we celebrated a win that was hard fought by an entire community of advocates. A boatload of thanks is due to many people for their hard work and support of our efforts, including Senator Blumenthal, Senator

Murphy, Congressman Courtney, Governor Malloy, DOT Commissioner Redeker, State Senator Formica, Representative Carney, Greg Stroud of SECoast, Jennifer Hillhouse for her tireless petition- signing efforts, the members of the town's Strategy Team, and most of all – each one of you who spoke out, in any form! Congratulations to you all for your hard work!

The Annual Town Business Meeting was held on January 23, 2017 at the Lyme-Old Lyme Middle School. The Board of Selectmen was proud to announce the **Lyme-Old Lyme High School's Life Skills Teachers, Aides, and Students as Citizens of the Year for 2016**. Many residents are not aware that each year students from this program come to town hall and spend hours on tasks that benefit all of us. Since its inception in 2009, over 3,000 hours of work have been performed by students. Town Hall interns Taylor Saunders, Kelly Mastrianna, Leah Migliaccio, and Alexa Agostine have assisted with the mammoth, ongoing task of converting paper records into electronic ones. Bilal Malik performed an ADA accessibility assessment of the town hall, and his work continues to guide us through necessary changes to the building. The students have gained vocational and social skills, and through our work with the young interns, we have gained an appreciation for the dedication and caring of their teachers and aides and a life-changing awareness of the limitless potential of the interns. **Congratulations to our 2016 Citizens of the Year.** That same evening, the voters also approved an appropriation of \$110,000 for completion of the Academy Lane Fire Dock, \$130,000 for LED street light conversion, and an appropriation for a new car for the Public Works Department.

In early July 2016, the Towns of Lyme and Old Lyme were able to apply the herbicide Flumioxazin in Rogers Lake to kill the rapidly growing invasive weeds, variable leaf milfoil and fanwort. CT DEEP issued the towns a three-year permit, so each year until 2018 we will treat once a year and monitor the results. Within weeks of the treatment, there was a noticeable reduction in weed growth, and by August, many areas that recently had dense growth were clear of the invasive weeds. This treatment made for a much

Selectwoman's Report *(continued)*

more usable and safe lake for recreational use. In June of 2017, the same treatment was used with positive results once again.

The **Midsummer Festival of 2016** was held on July 29 and 30, featuring many attractions, including our own Braiden Sunshine of the band Silver Hammer, the annual 5K Run benefiting the Friends of Music to support the role of band and chorus in honoring the 75th anniversary of Pearl Harbor, a dog parade/contest, and lots and lots of food and crafts. Even Old Lyme Memorial Town Hall was open for tours of our artwork displays, including a special display of artwork by members of the Seniors' Art Class! And of course, we ended the day with the Old Lyme Town Band and the fireworks! As usual, it was a great show enjoyed by many, despite the soggy weather.

In August, **Attorney Jack Collins** of the firm Suisman Shapiro was appointed as the new **Town Attorney** by the Board of Selectmen. Attorney Collins, a resident of Old Lyme, brings with him firsthand knowledge about the town and a full staff to support the town's legal needs. Retiring Town Attorney of over thirty years, **Marylin Clarke**, was elected as the Democratic Town Registrar in November of 2016, and **Catherine Carter** was elected as the Republican Town Registrar. Many thanks to Attorney Clarke for her years of service as our Town Attorney.

Our new **Facilities Manager, Phil Parcak**, began in September and had a busy year becoming familiar with the many town buildings, their current conditions, and the immediate needs. By the end of the year, he found his plate quite full but was already accomplishing a great deal. Phil is a wonderful addition to the town's resources and we anticipate that his good work will ultimately save taxpayer money.

Demolition of the old **Fred Emerson Boathouse** in Hains Park began in mid-August, and site preparation and foundation work began in early September. Despite some issues with the old slab, which required full demolition and a new slab to be poured at a costly change order, the boathouse quickly took shape and was substantially complete by May of 2017. On May 6, 2017, an opening celebration was attended by over 100 people to celebrate the project, with a re-dedication of the new building as the Fred

Emerson Boathouse. By the start of summer, the boathouse was in constant use, and the grounds were being completed. The Boathouse Lease with District #18 was signed by both parties, effective July 1, 2017, and the district was delighted with the final product. Because of the focus on the boathouse, many local residents ended up joining the Old Lyme Rowing Association and are now avid rowers, which was a positive outcome. The Old Lyme Rowing Association will continue to offer programs to all interested in the sport, both young and old!

The plans for **Rte 156 Bike Path and Sound View Improvements** also began in the fall of 2016. A contract was signed with B&W Paving Company, as well as with WMC Consulting Engineers for inspection services, to begin the streetscape on Hartford Avenue. While the fall and winter seasons didn't see a lot of activity, the construction began in earnest in the spring of 2017. By early May, the street was taking shape, and just before Memorial Day 2017, most of the work was completed. Hartford Avenue now has a whole new look in the hopes that more pedestrians and bicyclists will enjoy this beautiful area of Old Lyme.

Another big change for our town occurred at the town meeting held on September 27, 2016 when residents voted 82-79 in favor of joining **Ledge Light Health District (LLHD)**, which became effective on November 1, 2016. LLHD has a large staff of sanitarians, inspectors, and health advisors, including an epidemiologist and registered nurse, who all provide the services required by the State Department of Public Health. Stephen Mansfield, the Director of Health, was instrumental in helping with a smooth transition, and Patti Myers, former employee of Old Lyme, continued to spend much of her time in Old Lyme Town Hall. Residents can visit the website for Ledge Light Health District at www.ledgelighthd.org to become familiar with the services available, including forms, educational information on healthy communities, healthy homes, and emergency preparedness.

The **Annual Town Budget Meeting** was held on May 15, 2017 to approve the budget for FY 2018. The fiscal concerns about the

Selectwoman's Report *(continued)*

state budget dominated many of the budget discussions in our community, so the boards of selectmen and finance budgeted conservatively on anticipated state revenues and very cautiously on spending. The final approved budget was \$36,355,031, with \$800,000 coming from our healthy surplus, which will be tapped only if needed. The mill rate increased from 21.2 mills in FY 2017 to 21.75 mills for FY 2018.

We said good-bye to some familiar faces on our staff this year as well. After over fifty years of service to the Town of Old Lyme, **Bob Swaney** retired from the Department of Public Works! Bob was a valued member of the crew, and his knowledge of the infrastructure always came in handy. The Board of Selectmen named October 28, 2016 **Bob Swaney Day** in Old Lyme, in honor of his many years of service.

Also, our Town Assessor of thirty-eight years, **Walter Kent**, retired in April 2017. Walter served through numerous revaluations, budgets, and assessment hearings, supporting his claim that he has “seen it all!” He remains a longtime member of the CT Association of Assessing Officers (CAAO), serving on the Historian Committee, which meets monthly in Old Lyme Town Hall and has published a booklet titled *History of CT Assessors*. **Melinda Kronfeld** was hired as new town assessor, effective May 2017. Melinda previously served as assistant town assessor in the Town of Clinton, CT.

The entire town was grateful that our year was absent of any major storms or disasters and, of course, that the high-speed rail plan was defeated!



Lauren Girasoli attended a rally February 11, 2017 of about 100 local residents at the Olde Mistick Village to protest the Old Saybrook-Kenyon bypass. Federal, state, and local leaders from Connecticut and Rhode Island spoke, including Stonington First Selectman Rob Simmons.

Editor's Musings on the High-Speed Train Threat

As a life-long resident of Old Lyme with roots back to the early 1700s, I found the first rumblings of the train threat in early 2016 disconcerting but not believable. Dr. Gregory Stroud, in an Op-Ed piece printed in LymeLine.com on January 29, 2016, referred to them as “so nonsensical....that it is very easy to dismiss out of hand.” In my own naïve way of thinking, certainly a town with a strong, influential Historic District Commission would have the authority to prevent a high-speed train from barreling right through Lyme Street.

But murmurings increased after this news became public, and suddenly it became important that we write letters, LOTS of them, to the Federal Rail Administration (FRA) as well as local representatives, and the deadline for those letters was fast approaching; the original close for public comment had been January 31, 2016, but that had been extended to February 15. Coming through Lyme Street was the first of three alternatives being considered, and we had to voice our opposition en masse. The demise of a major part of our town, a town whose tercentenary I'd seen celebrated with the biggest parade EVER (in Old Lyme, that is) and dancing into the night, was at stake. Don't rituals cement our history and make it impenetrable? It was becoming more evident that such long history was no guarantee of a future. As Dr. Stroud's article pointed out, a plan that seemed absurd on a LOCAL level was actually “the most sensible, the least expensive, the least impactful” on the federal and state levels. If you hadn't ever experienced Old Lyme, or even visited it at all, this plan made sense. As U.S. Senator Richard Blumenthal said, “This plan is a fun fantasy for Washington planners, but a nightmare for all of us who have to live with this proposal.” All this to save train riders from Washington, D.C. to Boston a whopping thirty minutes.

There was a “come one, come all” informational meeting on May 1, 2016 in Gil Boro's Studio 80 + Sculpture Grounds off Lyme Street, hosted by Greg Stroud/SECoast. This was the first event anywhere on the entire Northeast Corridor protesting NEC Future (the entire plan for improving rail transportation along the Northeast Corridor, from Washington, D.C. to Boston). It was also the first public event



May 1, 2016 meeting at Gil Boro's Studio 80, hosted by Dr. Gregory Stroud/SECoast (center, addressing crowd). Visible in photo at approximately 11 o'clock is Olwen Logan of LymeLine.com, taking notes for articles that would help the cause! To the immediate left of Olwen is Jeffrey Andersen, Florence Griswold Museum Director, a museum that stood to lose EVERYTHING if the high-speed train came through. (Photo by Robin Breeding for SECoast)

sponsored by SECoast. People chatted; a few involved folks spoke, and there were post cards to mail to our government representatives to voice our concerns. It turned out that “voicing concerns” was something Old Lyme residents - natives and newcomers alike - do VERY well, including writing letters, making phone calls, and signing petitions spearheaded by Jennifer Hillhouse, a descendant of one of Old Lyme's founders. The fact that Old Lyme was the only town between Washington, D.C. and Boston that would have suffered serious losses from this plan made for a serious impetus to act!

A more formal public hearing was held on August 31 in the high-school auditorium, which was, literally, PACKED with about 540 people. This was the largest meeting ANYWHERE since NEC Future was announced in 2012. Members of the Federal Rail Administration gave a presentation of what was planned, what the possible options were, what the timeline for the decision would be—according to Kevin Hogan of WFSB, this was the first public hearing of the bypass proposal. At one point, State Representative Devin Carney asked the audience if this plan was like a cloud hanging over their heads; the people responded in one voice, as if orchestrated and under a conductor's baton, with a resounding YES!! (Carney, along

Editor's Musings on the High-Speed Train Threat *(continued)*



The first public hearing of the bypass proposal was held on August 31, 2016 in the Lyme-Old Lyme high school auditorium, with a capacity crowd of approximately 540 concerned citizens in attendance. (Photo courtesy of WFSB)

with Connecticut State Senator Paul Formica of the 20th Senatorial District, were the first two Connecticut politicians to take up the opposition.) Informal impressions after the meeting included that little consideration was taken of impact on the people, and how terrible it would be for the art area of town to be destroyed.

After the FRA announced on December 16, 2016 that the bypass was still in the plan, Old Lyme joined with other Connecticut and Rhode Island towns in the train's path. One rally was held in Olde Mistick Village near the Mystic Aquarium, which would've been obliterated by the train. Besides local officials from Connecticut and Rhode Island towns, including Bonnie Reemsnyder and Rob Simmons, and State Representative Devin Carney, U.S. Senator Richard Blumenthal was there; he had referred

to this plan in the past as "half-baked" and "hare-brained," as reported by Kim Drelich of *The Day* (New London), and vowed he would tie himself on the tracks if it went through.

On July 12, 2017, a Record of Decision was released by the FRA that removed the Old Saybrook – Kenyon Bypass from the plan! It was as if David beat Goliath all over again. The Day Editorial Board worded it beautifully on July 21 and paid a great tribute to Old Lyme; while lengthy, it bears repeating, particularly for those who didn't see it.

"The cast of thousands who successfully convinced the Federal Railroad Administration there must be better ways to fix the Northeast Corridor than running tracks through some of this region's most historic and beautiful areas should give themselves a round of applause.

"That the FRA plan could be stopped in its tracks [pun intended?] is proof that grassroots engagement works. It is a tribute to people like Greg Stroud of Old Lyme, a historian who turned into a community organizer. Once people realized what might befall their communities, they rallied in opposition and the elected leaders joined their ranks. While opposition from both Connecticut's U.S. senators and its members of Congress, Gov. Malloy and municipal officials proved critical, it was the outcry of private citizens, joined by environmentalists, preservationists, business and economic groups—and seemingly the whole town of Old Lyme—that got things started."

ADA Committee

Jennifer Datum

ADA Coordinator

The Town of Old Lyme Americans with Disabilities (ADA) Committee meets every other month. Our notice under the Americans with Disabilities Act is published on the town website, along with our meeting minutes.

Anyone who requires an auxiliary aid or service for effective communication or a modification of policies or procedures to participate in a program, service, or activity of the Town of Old Lyme should contact ADA Coordinator Jennifer Datum at (860) 434-1605, Ext. 228 as soon

as possible but no later than forty-eight hours before the scheduled event. The ADA does not require the Town of Old Lyme to take any action that would fundamentally alter the nature of its programs or services or impose an undue financial or administrative burden. Questions, concerns, requests for additional information regarding the ADA, or complaints that a program, service, or activity of the Town of Old Lyme is not accessible to persons with disabilities should be directed to Jennifer Datum.

Elected Officials

Term Expires

First Selectwoman , Bonnie A. Reemsnyder (D).....	Nov. 2017
Selectman , Skip Sibley (R)	Nov. 2017
Selectwoman , Mary Jo Nosal, (D).....	Nov. 2017
Town Clerk , Eileen Coffee (R).....	Jan. 2018
Town Treasurer , Timothy C. Griswold (R).....	Nov. 2019
Tax Collector , Judith Tooker (R)	Nov. 2019

Board of Finance

Andrew L. Russell, Chairman (R)	Nov. 2021
Janet Sturges (R)	Nov. 2019
Christopher W. Kerr (R)	Nov. 2019
David Woolley (D).....	Nov. 2021
H. Perry Garvin III (R)	Nov. 2017
Bennett J. Bernblum (D).....	Nov. 2017

Board of Finance Alternates

J. David Kelsey (R)	Nov. 2017
Robert Jose (R)	Nov. 2017
Adam Burrows (D)	Nov. 2017

Board of Assessment Appeals

George Finley (D).....	Nov. 2017
Roderick M. White (R).....	Nov. 2019
Timothy C. Griswold (R).....	Nov. 2017

Planning Commission

Harold L. Thompson, Chairman (R).....	Nov. 2020
Robert McCarthy, Vice Chairman (D).....	Nov. 2017
Steven Ross (R)	Nov. 2019
Christopher W. Kerr (R)	Nov. 2021
Edgar Butcher (D)	Nov. 2018

Regional Board of Education

Mary Powell-St. Louis (R) Lyme	Dec. 2019
Erick Cushman (R).....	Dec. 2019
Diane Linderman (D)	Dec. 2017
Nancy Lucas Edson (D).....	Dec. 2017
Jean Wilczynski (D)	Dec. 2017
Rick Goulding (D)	Dec. 2017
Beth Jones (D) Lyme	Dec. 2017
Stacy Winchell (R).....	Dec. 2019
Michelle Roche (D).....	Dec. 2019

Registrars of Voters

Catherine Carter (R).....	Jan. 2021
Marylin Clarke (D)	Jan. 2021

Elected Officials *(continued)*

Term Expires

Zoning Commission

Alan Todd (U)	Nov. 2017
John Johnson, Vice-Chairman (R).....	<i>(Resigned Nov. 2016)</i> Nov. 2018
Gil Soucie (D).....	Nov. 2019
Jane Cable, Chairman (D).....	Nov. 2020
Jane Marsh (R)	Nov. 2021
Paul Orzel (U)	Nov. 2018

Zoning Board of Appeals

Judy McQuade (R).....	Nov. 2017
Arthur E. Sibley (R)	<i>(Resigned Oct. 2016)</i> Nov. 2019
Nancy Hutchinson (D)	Nov. 2019
Kip Kotzan (D)	Nov. 2021
Mary Stone (D).....	Nov. 2018
Karen Conniff (D).....	Nov. 2020

Zoning Board of Appeals Alternates

Harry Plaut (R)	Nov. 2017
Marisa Hartman (D).....	Nov. 2017

Appointed Officials

Term Expires

Old Lyme Area Cable Advisory Council

Catherine Frank (R).....	Jan. 2019
Russ Gomes (R)	Jan. 2019

Commission on Aging

Karen Veselka (OLVNA)	(standing)
Phyllis Shepard-Tambini (R)	Jan. 2020
Doris Rand (D)	Jan. 2018
Cliff Johnson (R)	Jan. 2019
Joan Bonvicin (D)	Jan. 2018
Dorothy McAndrew (R)	Jan. 2019
Stephanie Lyon (Sr. Ctr. Dir.)	Ex Officio

Connecticut River Gateway Commission

Peter Cable, Delegate (D).....	July 2018
Suzanne Thompson, Alternate (R).....	July 2018

Conservation Commission

George James (R)	Jan. 2018
Lauralyn Lewis (D).....	<i>(Resigned July 2016)</i> Jan. 2018
Tom Sherer, Chairman (D)	Jan. 2017
Maureen Plumleigh (U)	Jan. 2018
Susan Baehr (U)	Jan. 2019
Rachael Gaudio (U).....	<i>(Resigned)</i> Jan. 2017

Conservation Commission Alternates

Rebecca Waldo (D)	Jan. 2018
Peter Cable/Suzanne Thompson.....	Ex Officio

Economic Development Commission

Robert Jose, Chairman (R)	Jan. 2021
Joseph Camean (R)	Jan. 2018
Susan Howard Cihocki (R).....	Jan. 2019
Geraldine Foster (D)	<i>(Resigned Dec. 2016)</i> Jan. 2019
John Stratton (R).....	Jan. 2020
Heather Gagnon (D).....	Jan. 2021
William O'Meara (R).....	Jan. 2022

Ethics Commission

Michael P. O'Brien,Vice Chairman (U)	Jan. 2017
Gloria Dimon (D).....	Jan. 2016
Jennifer Kendall (D)	Jan. 2018
Dwayne Basler (R).....	Jan. 2017
Robert Staab, Chairman (R)	Jan. 2018
Patricia M. Trainor, Secretary.....	Jan. 2017

Ethics Commission Alternates

Jennifer Kendall (D)	Jan. 2016
Emergency Management Director	
David Roberge.....	Jan. 2019

Appointed Officials *(continued)*

Term Expires

Estuary Transit District

John Forbis (D) Jan. 2021

Flood and Erosion Control Board

Steve Ross (R) Jan. 2018

Gary Smith, Vice Chairman (R) Jan. 2018

Todd Machnik, Chairman (R)..... Jan. 2018

Steve Martino (D)..... Jan. 2019

Ellie Czarnowski (U) Jan. 2019

Flood and Erosion Control Board Alternates

Donald Willis (R) Jan. 2018

David Roberge..... Ex Officio

Harbor Management Commission

Steve Ross, Chair (R) Jan. 2018

Robert Doyen (D) Jan. 2021

Michael Magee (U) Jan. 2018

Ned Farman, Vice Chair (D) Jan. 2018

John MacDonald (R) Jan. 2020

William Harris (D) Jan. 2020

Tom Meyer (R) Jan. 2021

George Finley (D)..... Jan. 2021

Robert Falaguerra (R) Jan. 2018

Harry S. Plaut, Harbormaster (R)..... Ex Officio

Michael Mackey, Deputy Harbormaster (U)..... Ex Officio

Health Director

Vijay Sikand, M.D. (R) Oct. 2016

(Town joined Ledge Light Health District Oct. 2016)

Historic District Commission

John Pfeiffer, Chair (D) Jan. 2018

John Forbis, Vice Chair (D) Jan. 2019

Barbara S. Traskos (D) Jan. 2020

Dini Mallory (R) Jan. 2021

Historic District Commission Alternates

Jeff Cooley (D) Jan. 2019

Cynthia Taylor (U) Jan. 2020

Inland Wetlands Commission

Lewis DiCamillo, Chairman (R)..... Jan. 2018

Evan Griswold (R) Jan. 2019

Tom Machnik (R) Jan. 2018

Christian Tompkins (U)..... Jan. 2019

Rachel Gaudio (U) Jan. 2020

Gary Gregory (U)..... Jan. 2020

Inland Wetlands Commission Alternates

Robert DePianta (D) Jan. 2017

Appointed Officials *(continued)*

Justices of the Peace: 1/3/2017-1/4/2021

(Elected at caucus or through application)

William U. Archer (D)	Luisa B. Grogan (D)	Harry Plaut (R)
Peter M. Bauchmann (U)	Doris C. Johnson (R)	Doris A. Recor (U)
John A. Bysko (R)	Victoria K. Lanier (R)	Bonnie A. Reemsnyder (D)
Jane E. Cable (D)	Leslie J. Massa (R)	Ruth Dillon Roach (D)
Nancy L. Campbell (D)	Brendan P. McKeever (R)	Mervin F. Roberts (R)
Christopher Carter (R)	Mary Jo Nosal (D)	Jennie Anne Rubera (R)
Karen B. Conniff (D)	Agnes Q. O'Connor (D)	John D. Seckla (U)
Barbara McBride Doyen (D)	Christopher F. Oliveira (R)	Michellee K. Speirs (U)
Jason Cameron Gagnon (U)	Frank S. Pappalardo (R)	Mary Stone (D)
Timothy C. Griswold (R)	Lawrence I. Peterson, Jr. (D)	Judith A. Tooker (R)
	Daria M. Phelps (D)	

Term Expires

Lymes' Senior Center—Board of Directors

Ruth Young (Lyme)	
Gary Weed (Lyme)	
Diana Seckla (Lyme)	
Donald Tapper, Municipal Agent for the Elderly (R)	Dec. 2016
Mary Miles (D)	Jul. 2017
Dorothy McAndrew (R)	Jul. 2019
Doris Johnson (R)	Jul. 2018
Ann Griffith (D)	Jul. 2018
Susan Campbell, Chairman (U)	Jul. 2019
Doris Rand (D)	Jul. 2016
Diane Blackwell (R)	Jul. 2017
Nancy Campbell (D)	Feb. 2017
Joan Bonvicin (D)	Jul. 2020
Kathy Lockwood (D)	Jul. 2020
Jeri Baker (D)	Jul. 2018
John Cody (R)	Jul. 2019

Open Space Commission

Diana Atwood Johnson, Chairman (R)	Jan. 2020
Amanda Blair (D)	Jan. 2019
Evan Griswold (R)	Jan. 2020
George James (R)	Jan. 2017
William Dunbar (R)	Jan. 2018
Peter Cable (D)	Jan. 2019
Bruce Baratz (U)	Jan. 2019

Open Space Commission Alternates

Mary Stone (D)	Jan. 2020
Gary Gregory (U)	Jan. 2018

Appointed Officials *(continued)*

Term Expires

Parks and Recreation Commission

Glynn McAraw (R)	Jan. 2020
Robert Dunn (R)	Jan. 2020
Nigel Logan (R)	Jan. 2020
John Flower (U)	Jan. 2018
Mary Ellen Garbarino (R).....	Jan. 2018
Missy Colburn (U)	Jan. 2019
Tim Gavin (U)	Jan. 2019
Don Bugbee, Parks and Rec. Director.....	Ex-Officio

Pension Committee

John Bysko (R)	Jan. 2017
Gil Soucie (D).....	Jan. 2018
Jeff Hartman (R).....	Jan. 2018
Bob Jose, Board of Finance	Ex-Officio
Kathleen Hall, Employee Rep.....	Ex-Officio

Planning Commission Alternates

Donald Willis (R)	Jan. 2018
Todd Machnik (R)	Jan. 2018
Barbara Gaudio (U).....	Jan. 2018

Regional Mental Health Board, Region II

Elizabeth Rubitski (U).....	<i>(Resigned Aug. 2016)</i> Jan. 2017
Kathleen Green (D)	Jan. 2019

Deputy Registrars

Jackie Miano
Sylvia Peterson

Rogers Lake Authority

Tom Baehr (D)	Jan. 2020
Robert Recor (U)	Jan. 2019
Richard Smith, Chairman until Jan. 2017 (U)	Jan. 2019
Tom Mondelci, Lyme	
Dennis Overfield, Lyme, Chairman, Jan. 2017	
Michael Sicord, Lyme	

Shellfish Commission

Mervin F. Roberts (R)	Jan. 2018
David Redfield (R)	<i>(Resigned)</i> Feb. 2017
John Seckla (U)	Jan. 2018
Todd Machnik (R)	Jan. 2020

Sound View Commission

David Kelsey (R)	Jan. 2018
Harry Plaut (R)	Jan. 2019
Joanne Reis Lishing (D)	Jan. 2019
Frank Pappalardo, Chairman (R).....	Jan. 2020
Michaëlle Pearson (D)	Jan. 2020

Appointed Officials *(continued)*

	Term Expires
Sound View Commission Alternates	
Frank Maratta (R).....	Jan. 2018
Jackie Miano(R).....	Jan. 2018
Paul Orzel (U).....	Jan. 2016
Sandra Ziemba (D)	Jan. 2018
Town Counsel	
Suisman Shapiro	Jan. 2018
Town Historian	
John Pfeiffer (D)	
Tree Commission	
Joanne DiCamillo, Chairman (U).....	Jan. 2020
Anne Bing (D).....	Jan. 2019
Emily Griswold (R)	Jan. 2019
Geraldine Foster (R)	Jan. 2020
Joan Flynn, M.D., Alternate (U)	Jan. 2018
Tom Degnan, Tree Warden (U)	Ex-Officio
Tree Warden	
Thomas Degnan (U).....	Jan. 2018
Alan Miezejeski, Deputy	Jan. 2017
Water Pollution Control Authority	
Dmitri Tolchinski (R)	Jan. 2018
Donna Bednar, Vice-Chair (D)	Jan. 2018
Frank Chan (D)	Jan. 2018
Ernest Lorda (U).....	<i>(Resigned Jan. 2017)</i> Jan. 2019
Richard Prendergast, Chair (R).....	Jan. 2021
Andrea Lombard (R).....	Jan. 2021
Douglas Wilkinson, Treasurer (U).....	Jan. 2021
Robert McCarthy (D)	Jan. 2021
Sal Cancelliere (D)	Jan. 2019
Joseph Carpentino (D)	
Water Pollution Control Authority Alternates	
Steve Cinami (R)	Jan. 2020
Joseph Carpentino (D).....	Jan. 2019
Water Pollution Control Authority Hearing Panel	
Robert DePianta (D)	July 2018
Luisa Grogan (D)	July 2018
Roger Breunig (R).....	July 2018
Zoning Commission Alternates	
Harvey Gemme (U).....	Jan. 2018
Stacy Winchell (R).....	Jan. 2018

Town Staff

Animal Control Officer	Lynn Philomen
Assistant Animal Control Officers	Leah Russell, Caleb Sapia
Assessor	(Retired May 2017) Walter E. Kent, Jr. (Appointed May 2017) Melinda Kronfeld
Administrative Assessment Technician	Maribeth Fraser
Building Department –Administrative Assistant	Kathleen Hall
Building Official.....	John V. Flower
Emergency Management Director.....	David Roberge
Finance Director.....	Nicole Stajduhar
Assistant to Finance Director	Amy Jensen
Fire Marshal	David Roberge
Health Department Administrative Assistant	Patricia Myers
Health Department, Sanitarian	Ledge Light Health District
Information Technology Coordinator	Ruth Roach
Land Use (Inland Wetlands, Planning, Zoning, Zoning Board of Appeals)	
Zoning and Inland Wetlands Enforcement Officer.....	Keith Rosenfeld
Land Use Administrator	Kim Groves
Zoning Enforcement Technician (Certified)	Kim Barrows
Parks and Recreation Director	Donald Bugbee
Selectman’s Office – First Selectwoman	Bonnie Reemsnyder
Selectman’s Office –Executive Assistant	Catherine Frank
Selectman’s Office – Manager	Michele E. Hayes
Senior Center Director	Stephanie Lyon-Gould
Social Services Coordinator.....	Jennifer Datum
Tax Clerk	Toni O’Connor
Tax Collector.....	Judy Tooker
Town Clerk	Eileen Coffee
Assistant Town Clerk.....	Vicki Urbowicz

Resident State Trooper: TFC Gary Inglis

Town Police: Wayne Collins, Sal Milardo, Dominic Solari, Robert Tyson, William Zipadelli

PUBLIC WORKS DEPARTMENT

Public Works Superintendent – Edward Adanti

Recycling Coordinator – Donald Rutty

Jeff Benedetto
Ben Carroll
Paul Fiore
Lawrence Galbo

Richard Gocka
Brian Lorentson
Robert Perry
Donald Saunders

Election Results– November 8, 2016

Presidential

Republican – Trump and Pence, 1,999*
Democrat – Clinton and Kaine, 2,498
Green Party – Stein and Baraka, 63
Libertarian – Johnson and Weld, 142
Write In – Castle and Bradley, 1

United States Senator

Republican – Dan Carter, 1,667
Democrat/Working Families –
Richard Blumenthal, 2,942*
Green Party – Jeffery Russell, 29
Libertarian – Richard Lion, 27

Representative in Congress, Congressional District 2

Republican – Daria Novak, 1,552
Democratic/Working Families –
Joe Courtney, 3,007*
Green Party – Jonathan Peltó, 49
Libertarian – Daniel Reale, 41

State Senator, Senatorial District 20

Republican/Independent – Paul Formica, 2,996*
Democrat/Working Families –
Ryan Henowitz, 1,599

State Representative, Assembly District 23

Republican – Devin R. Carney, 3,468*

Registrar of Voters, Town Old Lyme

Republican – Catherine Quine Carter, 2,051*
Democratic – Marylin Clarke, 2,410*

**Indicates Elected Candidate*

Primary Election Results - April 26, 2016

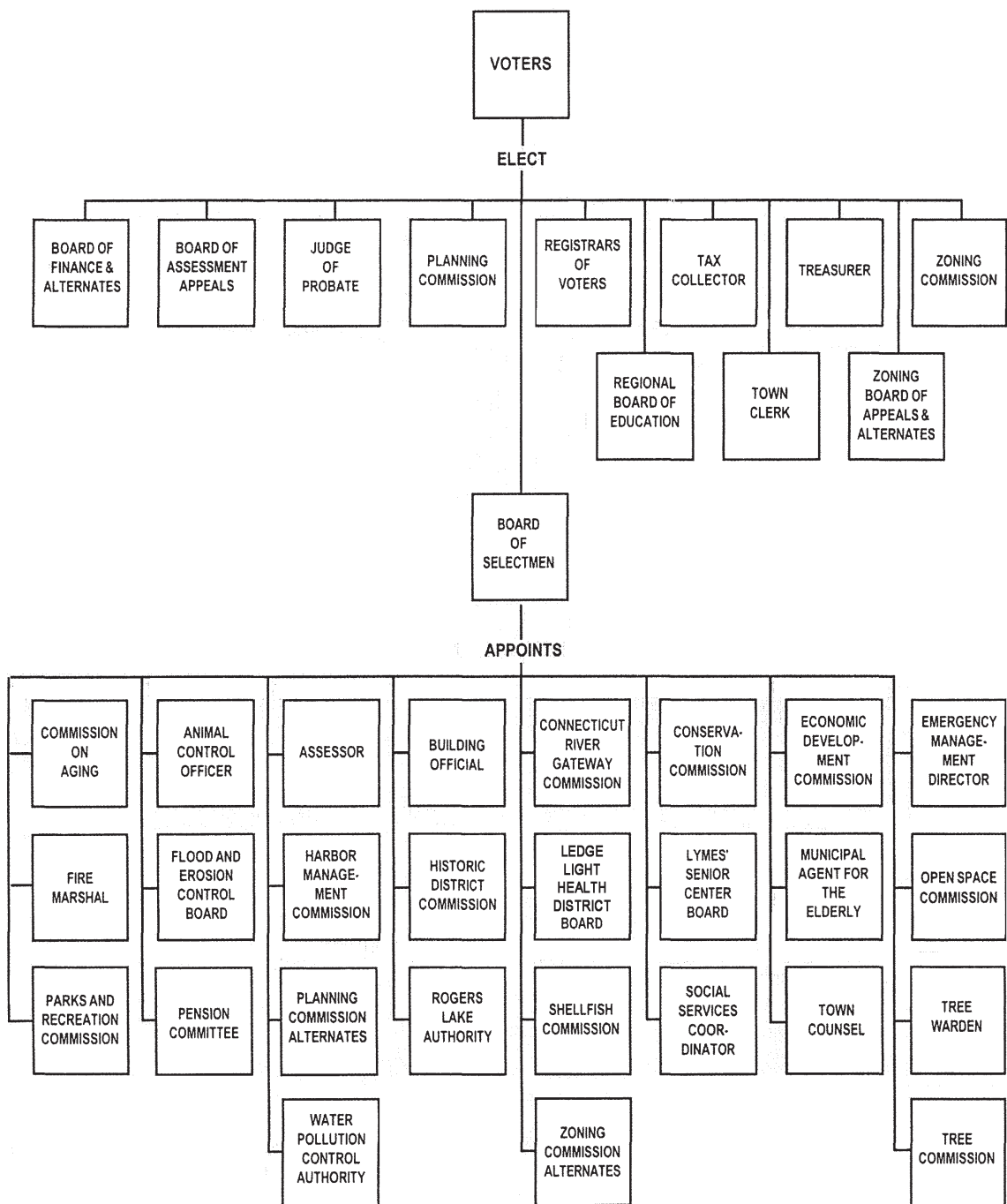
REPUBLICAN

<i>Nomination</i>	<i>Votes</i>
Ted Cruz.....	89
Ben Carson	5
Donald J. Trump.....	471
John R. Kasich.....	326
Uncommitted.....	13
<i>Total Number of Names Checked as Having Voted in Town: 895</i>	

DEMOCRAT

<i>Nomination</i>	<i>Votes</i>
Roque “Rocky” De La Fuente	0
Hillary Clinton	477
Bernie Sanders	434
Uncommitted.....	14
<i>Total Number of Names Checked as Having Voted in Town: 898</i>	

Organization Chart



Note: Justices of the Peace are elected by the Democratic and Republican Town Committees and appointed by the Town Clerk.

U.S. Senator Richard Blumenthal

<https://www.blumenthal.senate.gov/>
90 State House Square, 10th Floor
Hartford (860) 258-6940
915 Lafayette Blvd., Rm 230
Bridgeport (203) 330-0598
706 Hart Senate Office Bldg.
Washington, DC (202) 224-2823

U.S. Senator Chris Murphy

<http://www.murphy.senate.gov/>
One Constitution Plaza, 7th Fl.
Hartford, Connecticut 06103
(860) 549-8463
136 Hart Senate Office Bldg.
Washington, DC 20510
(202) 224-4041

U.S. Representative Joe Courtney (2nd Congressional District)

<http://courtney.house.gov/>
2348 Rayburn HOB
Washington, DC 20515
(202) 225-2076
55 Main Street, Suite 250
Norwich, CT 06360
(860) 886-0139

CT State Senator Paul Formica (20th District)

<http://ctsenaterepublicans.com/home-formica/>
Legislative Office Building
300 Capitol Avenue
Hartford, CT 06106
1-800-842-1421 (CT only) 860-240-8800 (out of state)

CT. State Representative Devin Carney (23rd District)

<http://cthousegop.com/devin-carney/>
Connecticut House Republican Office
L.O.B. Room 4200
Hartford, CT 06106
860-240-8700 800-842-1423 (toll-free in CT)

Marriages July 1, 2016 - June 30, 2017

Brian David Temte & Dahliani Reynolds	July 3, 2016
Jason Michael Biondo & Chelsea Margaret Mangs.....	July 15, 2016
Gregory James Giustino & Lauren Alexandra Hart	July 15, 2016
John Wesley Harvey & Jennifer Mary Moore.....	July 16, 2016
Emerson Hutcheson Fitch & Emily Anne Janacek	July 16, 2016
Sean Michael Keating & Jessica Marie Fagan.....	July 16, 2016
Richard Scott Dubay & Michele Lynn Radin	July 17, 2016
Jason Saroyan Ignatius & Allison Claire Bullard.....	July 23, 2016
Dorothy Karen Hart Ashe & Nancy Sue Cartwright.....	July 23, 2016
Michael Paul Sherman & Julia DeMartini Day	July 30, 2016
Thomas James Bailey & Yessica Yamilet Chavez-Gutierrez	August 6, 2016
Claiborne Mastin White & Amanda Margaret Sibley.....	August 6, 2016
Daniel William O'Reilly & Kara Ann DelBuono (Southington).....	August 6, 2016
Benjamin William Edward Eaves & Kimberly Ann MacDougall (Ridgefield)	August 6, 2016
Christopher Gene Ennis & Chelsea Lynn Coleman	August 7, 2016
Thomas Harold Richardson & Heather Aley Austin	August 13, 2016
Frank Harrington Deutschmann & Cassandra Marlo Badini.....	August 13, 2016
Kevin Michael Crowley & Terry Lee Wolf	August 14, 2016
Brian Carl Girasoli & Lauren Smith Dickey.....	August 19, 2016
Robert Kevin Whelan & Evelyn Jean Gregg.....	August 19, 2016
James Albert Gaski & Dawn Marie Tagariello	August 20, 2016
Joanna Mendoza & Adria Lynn Cotto.....	August 20, 2016
Joshua Andrew Howell & Harriet Havemeyer Hurworth.....	August 20, 2016
William James Leonard Jr. & Rosemarie Elizabeth Amatore	August 27, 2016
Tristan Nicholas Ostronic & Tanya Marie Rotolo	August 27, 2016
John Robert Tamsin & Rebecca Hladki Tarbell.....	August 27, 2016
William Joseph Lunney Kennedy III & Abigail Anna Elliott (Old Saybrook).....	September 3, 2016
Douglas Allan Cameron & Allyson Louise Gleason	September 4, 2016
Daniel Francis Hodgdon & Kristyn Marie Ciccone	September 10, 2016
Gary James Everett & Constance Brewerton Carocari	September 10, 2016
Ronald Frank Oliwa & Margaret Ann Kraemer	September 10, 2016
Clayton Gregory Anderson & Rachel Lynn Grigorian	September 10, 2016
Nicholas Winocur & Kelley Jean Bostrom	September 11, 2016
Andrew Carlo Chonka & Rebecca Dawn Goss.....	September 17, 2016
Scott Fraser Cathcart & Kayla Marie Cyr	September 17, 2016
Quintin C. Velazquez III & Melanie Phan Hok.....	September 17, 2016
Christopher Scott Glaser & Kristin Erika Slyne.....	September 18, 2016
David Boyd Miles & Carol Ann Lyman.....	September 22, 2016
Andrew Charles Keiser & Courtney Lynn Conley	September 24, 2016
Kyle Lindley Candelet & Lyndsey Ann Neville.....	September 24, 2016
Clinton James Bradfield & Lara Juliette Kohler	September 24, 2016
Kevin James Hall & Elizabeth Amy Rhoades.....	September 24, 2016
John Keefe Christoforo & Maria Lynn Minkos (Guilford).....	September 30, 2016
Michael Matthew Derrenberger & Allison Torrey Haff	October 1, 2016
Elliot W. Penna & Susan M. Salzillo (Clinton)	October 1, 2016
Charles Brian Gill Jr. & Marlee Helen Saad.....	October 1, 2016
Michael Steven Gantos & Jacqueline Ann Montclair	October 2, 2016
Jesus Almodovar & Jasmine Olivia Johnson (Enfield)	October 5, 2016

Marriages July 1, 2016 - June 30, 2017 *(continued)*

Jordan James Gleason & Christina Elizabeth Heinssen (Old Saybrook)	October 8, 2016
Russell Williams Twiss & Avery Reinholt Moore	October 8, 2016
Timothy Brice Loflin & Alycia Marie Marcolini (Preston)	October 8, 2016
Heith Michael-Peter Pino & Kathryn Ann Wittman	October 16, 2016
Michael Daniel Lepri & Jessica Lynn Pepin	October 22, 2016
Michael R. Barnett & Lisabeth Heather Bochain	October 23, 2016
Jeffrey Jacob O'Meara & Rachel Ann Bagby	October 23, 2016
Brandon John Harris & Caitlin Elizabeth Oliver	November 5, 2016
Theodore Osborn Turner & Lenora May Neely	November 5, 2016
Angela Franshall Mitchell & Nicole Christy Paradis	November 5, 2016
Thomas Gene Pagley & Diana Zuckerman	November 6, 2016
Adam Michael Stiffler & Alyssa Hart McGill	November 12, 2016
Jordan Edward Tuttle & Jill Leigh Porrini (Bristol)	November 12, 2016
Peter Richard Furmick & Linda Marie Johnson	November 13, 2016
Thomas Mark Negrelli & Danielle Stanton Kraus (Madison)	November 18, 2016
Matthew Miller Guarino & Stefanie Elizabeth Johnson	November 20, 2016
Christopher James Henderson & Pacyn E. Caron (East Lyme)	December 3, 2016
Daniel James Sharp & Melissa-Anne Meilleur	December 16, 2016
Mohamed Abdoulaye Diagne & Marie Diop	December 27, 2016
Mario Vyacheslav Gonzalez-Fuentes & Mary Lauren Field	December 29, 2016
Jason St. Pierre Cowee & Katlyn Ann Brown	January 5, 2017
Ryan Megson Grissom & Amber Nicole Price (East Haddam)	February 22, 2017
Shi Pu & Inglis Elizabeth Tucker (Norwich)	March 3, 2017
Richar Antonio Santos-Polanco & Kalumma Criss Martinez	March 11, 2017
Henry John Kmietek & Margaret Lucille Pytlik	March 20, 2017
Jeffrey Langan & Joy Huffman (New London)	March 30, 2017
Scott Charles Patterson & Jillian Marie Patterson	April 11, 2017
Anthony Gerard Bakx & Sarah Lyn Steffanci	April 13, 2017
German A. Pugo & Glendy M. De Leon	April 22, 2017
John Patrick O'Keefe & Joeli Lora O'Leary	April 28, 2017
Daniel John Heffernan & Tiare Marie Catrambone	May 6, 2017
Matthew Joseph Blau & Amanda Rae Gallagher	May 7, 2017
David Keith Higgins & Laura Kay Collins	May 13, 2017
Mauricio Salazar-Nieto & Camilla Urbano	May 19, 2017
Frank Alfred DeMao III & Brandi Lee Marschat	May 21, 2017
Timothy Phillip Huit & Stephanie Marie Montalto	May 27, 2017
Hunter Garrett Hardin & Elizabeth Sarah Millman	June 3, 2017
Michael Adam Roseman & Krystle Marie MacNeil	June 6, 2017
Carl Edward Douville & Chelsea Ann Dinallo	June 9, 2017
Darren Tran Le & Christoph Oberli	June 12, 2017
Jeremy Ryan Shipley & Cornelia Wingfield Twining	June 16, 2017
Tyler Elliott Gore & Lauren Jean Bergren	June 17, 2017
Andrew Joseph Staniszewski & Stephanie Anne Freeman	June 17, 2017
Dayton Michael Dell & Sarah Elizabeth Hardy	June 23, 2017
Daniel Scott Hansen & David Douglas Rau	June 24, 2017
Michael Kelly Hall & Sarah Ashley Prpich (Groton)	June 24, 2017
Paul James Simeone & Katherine Rosalie Jones Fuller	June 25, 2017

Deaths July 1, 2016 - June 30, 2017

Alan M. Graber (Old Saybrook)	July 8, 2016
Constance Szado Anderson (New Haven)	July 16, 2016
Raymond Clinton Northrop, Jr.	July 17, 2016
Margaret Marie Cleary (New Haven)	July 27, 2016
Peter Joseph Silvestri (Hartford).....	August 5, 2016
Lillian Roy	August 6, 2016
Joan L. O'Connell (Westbrook).....	August 8, 2016
Cosimina Jean Marino (Waterford)	August 21, 2016
James B. Noyes (New London)	August 25, 2016
James Stackpole Herman (Waterford).....	August 30, 2016
Jeanne Raymond Aspinwall (New London)	September 7, 2016
James Joseph Mackenzie	September 21, 2016
Richard W. Neigel (New Haven)	September 21, 2016
Alessandra (Wanda) Condict (New London).....	September 25, 2016
Ernest H. Edgerly.....	September 28, 2016
Kathleen Bernadette Lauler	September 28, 2016
Louise Lewis Noyes (New Haven)	September 30, 2016
Brenda Gael Baker (Hartford)	October 4, 2016
Kathleen Ann (Weaver) Rand (Middletown).....	October 7, 2016
James Allan Speirs (Old Saybrook)	October 8, 2016
Francis J. Buckley Jr.....	October 21, 2016
Theresa R. Walsh (Hartford).....	October 26, 2016
Vincent S. Agostine (Old Saybrook).....	October 28, 2016
Ronald Dean Purinton (Westbrook).....	November 5, 2016
David Leslie Grimes	November 5, 2016
Elizabeth Katam Lorello (Middletown).....	November 12, 2016
Susan Leslie Champine (Middletown)	November 19, 2016
Elinor W. Fisher (Middletown).....	November 27, 2016
Ashley Jones	December 1, 2016
Gloria Jean Freeman (New London)	December 1, 2016
Robert C. Chapman Jr. (New London)	December 14, 2016
Mary Jean Vasiloff	December 18, 2016
Stephanie C. Bailey (East Lyme).....	December 30, 2016
Walter O. Seifert.....	January 2, 2017
Daniel Cone Pease Jr. (Westbrook)	January 2, 2017
Constance Limburg Kastelowitz (Stonington).....	January 9, 2017
Marjorie Janet Green	January 27, 2017
Thomas F. Keogh (Groton)	January 27, 2017
Patricia Ann Northrop (Branford).....	January 27, 2017
Karl M. Frawley (Branford)	February 4, 2017
Jean D. Lewis (New Haven).....	February 7, 2017
Brett M. Westcott (Westbrook)	February 8, 2017
Elwin Neil Ritty Jr. (Waterford)	February 14, 2017
Mary K. Faircloth (New London)	February 17, 2017
June B. Speirs	February 19, 2017
Ida Shutsky (Middletown).....	March 2, 2017
Stephen Alan Ross	March 3, 2017
Mark William Bugbee (Waterbury)	March 14, 2017
Nancy Marvin Stark (Harford).....	March 16, 2017

Deaths July 1, 2016 - June 30, 2017 *(continued)*

Richard J. Mulligan (Waterbury)	March 19, 2017
Carol Fowler Stanton (Middletown)	March 19, 2017
John E. Hamrick (Westbrook)	March 24, 2017
Allan Schmidlapp	April 1, 2017
Patricia Rapp Cook (Niantic)	April 11, 2017
Carol O'Day Moriarty (New Haven)	April 11, 2017
William Thurston Hincks (Middletown)	April 16, 2017
Edward J. Musil (Branford)	April 20, 2017
Joseph John Vitali (New London)	April 22, 2017
John Richard Ernest Urbowicz (Branford)	April 26, 2017
Donald B. Miller Jr.	May 4, 2017
Nathalie H. Judson	May 9, 2017
Jeannette Clara Cotter	May 15, 2017
Barbara B. O'Connell (Middletown)	May 19, 2017
Karen E. Marinone (Hartford)	May 21, 2017
Denise Anne Wright (Essex)	May 22, 2017
James Grant	June 3, 2017
Gregory E. Kelly (New Britain)	June 10, 2017
Leon Dennis Holloway (Niantic)	June 12, 2017
Daniel Mario Pennella	June 14, 2017
William Paul Huntley (New London)	June 26, 2017
Katherine Leslie Farrell (New London)	June 28, 2017

Assessor

Walter E. Kent, Jr., CCMA II
Assessor (Retired April 2017)

Melinda R. Kronfeld, CCMA I
Assessor (Beginning May 2017)
mkronfeld@oldlyme-ct.org

Mickie Fraser, AAT
*Administrative
Assessment Technician*
assessor@oldlyme-ct.org

This year saw changes in the assessor's office with the appointment of a new assessor in May following the retirement of Walter E. Kent, Jr. in April after thirty-eight years of service. The Grand List showed a slight decrease from 1,575,473,165 in 2015 to 1,574,693,985.

The challenges presented by the Motor Vehicle Department continued with many new vehicles and registration renewals not being reported on the regular DMV list for billing in July. Hopefully as we hit the two-year mark since the DMV computer upgrade we will see some of these problems resolved.

Deadlines for exemptions, filing deadlines, and other points of interest from the Assessor's office can be found on our website, Oldlyme-CT.gov.

Updates are also printed in *Old Lyme Events*, which is released four times a year.

Our office is open from 9 A.M. to 4 P.M. Monday through Friday. Mickie Fraser, Administrative Assessment Technician, is happy to answer your questions at 860-434-1605 x 219 or assessor@oldlyme-ct.gov.

To contact Melinda Kronfeld, Assessor, call X 218 or mkronfeld@oldlyme-ct.gov.

Board of Finance

Andy Russell
Chairman

*Meetings: Third Tuesdays, and every Tuesday in February and March.
All are welcome!*

Your Old Lyme Board of Finance continues to be very conservative as the availability of funds from Hartford continues to disappear. Since the majority of our tax income comes from homeowners' property tax, we are mindful of the fact that our residents are stretched financially.

The preliminary financial report for the 2017 fiscal year that ended on June 30, 2017 shows us that we collected over \$396,000 more in taxes than anticipated thanks to our taxpayers and our tax collector, Judy Tooker. Our total revenues were \$764,012 higher than anticipated. Intergovernmental revenues exceeded budget amount by \$282,162 because we did not budget for Educational Cost Sharing funds from the State of Connecticut and we received \$247,462.

We also spent \$1,014,481 less than budgeted. The savings were realized from many areas of the budget, including a savings of over \$88,000 on our insurance line and over \$177,000 in savings from our boards and commissions. Our Old Lyme Municipal Police and volunteer fire department saved us over \$3,000,000 combined. We also saved \$75,000 on our fees for trash

and recycling. We thank our town employees, boards and commissions, and finance director, Nicole Stajduhar. To maintain our strong bond, we continue to strive to keep the fund balance above the recommended 15 percent of our total town budget, including our share of Region 18's budget. As of June 30, 2017 we are at \$8,606,041, or 24.8 percent of our budget.

We invested over \$400,000 in our town roads as well as our upgrades to the equipment and buildings that the public works, police, and fire departments use to keep us safe. Some of these items included completion of the salt shed and garage floor at public works, completion of the funding for the Academy Lane Fire Dock, and a boiler at the Lyme Street Station. We also funded the replacement of the air conditioning at the Lymes' Senior Center.

During the course of the year several items were approved at various town meetings, which included \$234,620 for Sound View Improvements, \$130,000 for conversion to LED street lights, and monies to complete the above-mentioned Academy Lane Fire Dock.

Board of Finance *(continued)*

We schedule purchases of larger capital items and projects with funds from multiple years to soften the impact to taxpayers. The most significant items in this category are our fire trucks, our roads, and open-space purchases. We continue to set aside funds to replace two trucks in 2020 by accumulating \$130,000 per year over six years.

Our thanks need to go to board secretary Michele E. Hayes and our town report editor, Michele Dickey.

As chairman of the board of finance, I would like to thank our board of selectman and town employees for their help with the budget process. I would also like to invite you to join us during the budget process. Our regular meetings are the third Tuesday of each month, and we meet every Tuesday during February and March.

Building Department

John Flower
Building Official

Building Permits Issued from 7/1/2016 to 6/30/2017

5	Permits -	Accessory Buildings	\$52,500.00
31	Permits -	Additions	\$2,873,608.00
1	Permit -	Additions/Alterations	\$60,000.00
77	Permits -	Alterations	\$2,702,788.00
1	Permit -	Barn	\$164,096.00
1	Permit -	Commercial Building	\$0.00
7	Permits -	Demolition.....	\$0.00
205	Permits -	Electrical	\$264,448.00
12	Permits -	Foundation	\$3,419,375.00
6	Permits -	Garage	\$172,185.00
141	Permits -	Heating, A/C	\$1,058,958.00
12	Permits -	New Residence.....	\$726,200.00
170	Permits -	Plumbing	\$175,461.00
7	Permits -	Pools	\$352,424.00
175	Permits -	Repairs.....	\$2,879,554.00
6	Permits -	Replace Fuel Tanks.....	\$95,900.00
1	Permit -	Security.....	\$6,218.00
24	Permits -	Temporary Structures	\$72,863.00
5	Permits -	Wood Stoves	\$0.00

Total Number of Permits Issued 887
Total Fees Received During Fiscal Year \$151,414.00
Total Cost of Permits Issued \$15,076,578.00

Citizen of the Year - 2016

The Board of Selectmen names Lyme-Old Lyme High School's Life Skills & Transition Program Teachers, Aides & Students The Town of Old Lyme's Citizens of the Year

Members of our community may be unaware of the important role played in our community by the teachers, assistants/job coaches, and especially the students from Regional District 18's Life Skills program. It has been nearly ten years since the town first began working with student interns from Lyme-Old Lyme High School. The relationship has been considered a success for the students and has proven invaluable for the town.

Historically, Regional District 18 contracted with outside agencies to provide vocational experiences and transition services to students with Individual Education Plans. The decision made a decade ago to bring vocational experiences "home" to Old Lyme meant significant financial savings to the district and created a unique opportunity for our community. The Town Hall internships alone represent over 3,000 work hours.

Leslie O'Connor was coordinator of the Life Skills program when the Town Hall internship program was developed. The program was considered a chance for our community to really be a community. And, because of the success of the Town Hall internships, many other organizations and businesses have also welcomed Life Skills interns: OLPGN's Book Cellar, the Big Y, Lyme Academy College, the Nearly New Shop, Elements florist, Old Lyme Veterinary Clinic, Bee & Thistle Inn, River's End Bait & Tackle, and Gladeview among them. Local attorney Greg

Carnese has offered to develop a job in his office for interns. Students have worked alongside the Regional District's maintenance staff as landscapers. In the Life Skills program, students work as the high school's recycling technicians and have run small businesses, including making and selling gift tags, dog treats, and jars of tomato sauce and soups. They have also catered staff luncheons and meetings. According to Leslie, our community has supported them by buying every product offered.

With the help of job coaches Elaine Niles, Gina Wohlke, and Elizabeth Watrous Stopa, Town Hall interns Taylor Saunders, Kelly Mastrianna, Leah Migliaccio, and Alexa Agostine took on the mammoth, ongoing task of converting paper records into electronic ones. Bilal Malik performed an ADA accessibility assessment of the Town Hall, work that continues to guide us through necessary changes to the building. The students have gained vocational skills, practiced invaluable social and communication skills, and have been able to create some impressive resumes. Through our work with the young interns, we have gained an appreciation for the dedication and caring of their teachers and job coaches, and a life-changing awareness of the limitless potential of our most exceptional citizens. We are delighted to acknowledge the contributions of our 2016 Citizens of the Year.

Citizen of the Year - 2016 *(continued)*



The Board of Selectmen honored the Lyme-Old Lyme High School Life Skills Program as Citizens of the Year, including students (left to right: Bilal Malik, Taylor Saunders, and Kelly Mastrianna; not pictured: Leah Migliaccio and Alexa Agostine), teachers (Leslie O'Connor, who developed the program) and job coaches (left to right, Adrienne Viscio, Elaine Niles, and Gina Wohlke; not pictured, Elizabeth Watrous Stopa). Students provided many hours of service to the townspeople over several years, and have become a welcome addition to the Town Hall as they assist the staff on important tasks. The recipients are pictured with the entire Board of Selectmen, as well as past recipients Peter Cable (2013), Lynn Fairfield-Sonn (2016); Mary Seidner (2015); and Janet Sturges (2010).

Commission on Aging

Don Tapper
Chairman, Retired

As chairman of the Commission on Aging for the last twenty years and a member of the Board of Directors of the senior center for nineteen years, I have been pleased to serve

the elderly population of Lyme and Old Lyme. I have been retired as of January 1, 2017. Please call the town hall and Lymes' Senior Center for help with senior issues.

Connecticut River Gateway Commission

Peter Cable

Old Lyme Representative

Meetings: Fourth Thursdays, RiverCOG Office, Essex.

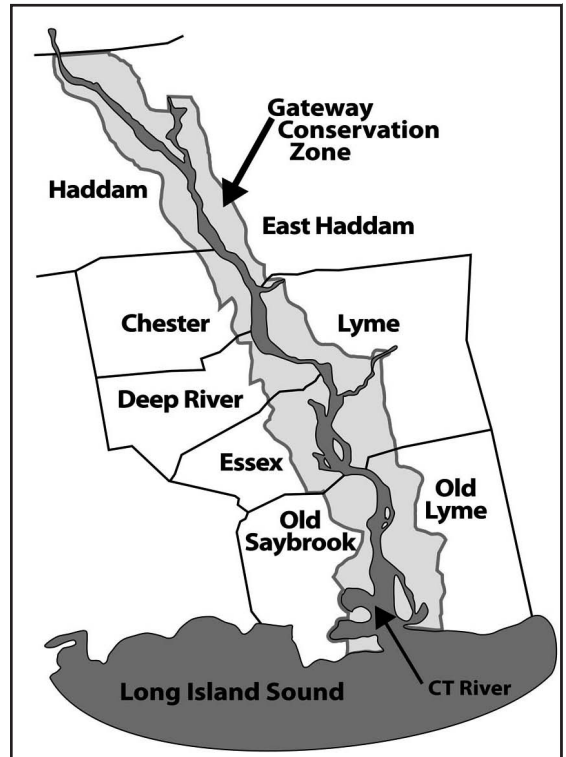
The US Department of the Interior has identified the Lower Connecticut River Valley as “one of the most important ecological landscapes in the United States,” the last significant river estuary on the eastern U.S. seaboard that still remains unspoiled.

Protected by the sandbar at the mouth of the river, the Connecticut River estuary has been spared the visual blight and environmental threats accompanying commercial development and shipping facilities characteristic of most major rivers. However, the natural beauty and environmental integrity of the region’s marshland and wooded highland could easily be threatened by indiscriminate development.

Preservation of the river’s scenic and environmental qualities resulted from the actions of the communities of the lower river valley, acting as partners, to form the Connecticut River Gateway Commission. The commission became operational in 1974 with the necessary oversight authority to regulate development activities through local zoning regulations within a conservation zone, shown in the map, bordering the river.

In addition, the commission’s endowment generates sufficient income to help preserve land through acquisition in partnership with land preservation organizations or by supporting other protective measures. This past year the Gateway Commission sponsored with a matching grant an important project in Lyme helping to eradicate phragmites, an invasive grass that displaces native plants and animals in marshland. In addition, the Gateway Commission’s opposition to the Federal Railroad Administration’s (FRA) “Kenyon Bypass” Northeast Corridor upgrade alternative through Old Lyme was another strong voice leading to the eventual abandonment of that alternative by the FRA.

The Gateway Commission currently consists of two members representing each of the eight towns of the lower CT River valley -- Chester, Deep River, East Haddam, Essex, Haddam,



The Connecticut River Gateway Commission is responsible for regulating development through local zoning regulations within the conservation zone around the Connecticut River.

Lyme, Old Lyme, and Old Saybrook -- as well as representatives from the Lower CT River Council of Governments (RiverCOG) and a representative of the Commissioner of Department of Energy and Environmental Protection (DEEP).

The Gateway Commission meets on the fourth Thursday of the month at the RiverCOG office in Essex. For more information on the commission contact RiverCOG Senior Planner and Gateway staff member J.H. Torrance Downes at 860-581-8554 or at tdownes@rivercog.org. Contact and meeting information can also be found on the web at www.ctrivergateway.org.

Conservation Commission

Tom Sherer
Chairman

George James
Secretary

*Meetings: First Tuesdays, Memorial Town Hall, 7:30 p.m.
ConservationCommission@oldlyme-ct.gov*

The Old Lyme Conservation Commission has called attention to the new state law that prohibits the use of fertilizers containing phosphorous around lakes and streams. We have publicized the importance of testing the water in our wells for potability, just as we have long endorsed the need to test for radon, the deadly colorless, odorless gas that kills residents in their homes who are unaware of the danger. We have actively promoted a local initiative calling for protection for our pollinators, notably the honeybee. Besides having a number of insect enemies, honeybees are subject to the harmful effects of pesticides and lawn chemicals. The collapse of bee colonies has had a profound impact on our food resources locally and nationally.

Ground Water: In recent years, extended periods of dry weather have focused added attention on the preservation of our ground water. Almost all of Old Lyme's residents depend on shallow or drilled wells for their drinking water. We have three aquifers in Old Lyme that supply those wells. The Conservation Commission has continued its efforts to assure that our water resources are preserved and protected against lawn chemicals, pesticides, and sewage.

The Conservation Commission has developed a long-range plan for Rogers Lake, and the Rogers Lake Authority has adopted it. However, any long-term solution involves dredging portions of the lake, building a local sewage treatment plant, and providing public water for the Rogers Lake community as more and more of the cottages are occupied year round.

Partnering to Preserve Open Space: About 2,000 acres of the 27 square miles of Old Lyme land is protected open space. The Old Lyme Land Trust has over 1,000 acres to maintain and has to rely mainly on donations for a wide variety of necessary maintenance projects, including the Watch Rock property which sees a great deal of use as it acts as one of the town's parks in the summer. The Lohman property also requires a large outlay for mowing and tree maintenance. The Land Trust relies on a group of dedicated volunteers to maintain the trails in top condition, remove invasive plants, and do some plantings. It has made progress in linking their open space parcels by means of a growing trail network throughout the town. The newly created Three Mile River trail network has added a new walking trail in this area thanks to Jennifer Hillhouse, who granted a key walking easement on her land. The Land Trust also added an important parcel owned by Howard Tooker. The Conservation Commission commends the Old Lyme Land Trust for its addition of open space parcels and for its aggressive maintenance program for the lands it owns.

The Conservation Commission welcomes new members who want to devote time and energy to the preservation of Old Lyme's natural resources.

Emergency Management

David W. Roberge

Director

Mother Nature gave us a break here on the shoreline this year with less than average snowfall. While we had a smaller number of storms, we weathered through them with no major impacts to the community.

Again this year, the Town of Old Lyme was the recipient of grants totaling \$20,000 from the Nuclear Safety Emergency Fund. These funding sources continue to provide for additional response equipment and emergency operations center improvements.

Other projects that continue to move forward include our radio communications upgrades. These improvements will enhance interoperable communications between all town public safety departments, allowing improved communications along a single bandwidth.

We are still expanding our data files for local residents who might have special or functional needs in the event of a localized emergency incident. People who might have potential mobility problems or transportation needs or might be dependent upon electricity for life support are encouraged to register with this office.

A Special Needs Registration Form is included again in this year's annual report. If you or someone you know in town might be in need of special assistance, please take a moment and complete the form and return it to this office. All information received is maintained confidential.

You can always follow Old Lyme Emergency Management on Facebook and Twitter for important information and storm updates.

Estuary Transit District

Joseph Comerford
Executive Director

John Forbis
Treasurer

*Meetings: Third Friday of alternate months,
9:30 A.M., Estuary Transit District. All are welcome.*

The Estuary Transit District (ETD) was formed in 1981 by the nine towns of the Connecticut River Estuary region: Clinton, Chester, Deep River, Essex, Killingworth, Lyme, Old Lyme, Old Saybrook, and Westbrook. ETD’s mission is to provide local, coordinated public transportation for all residents of the area. To meet this goal, ETD operates public transit under the name 9 Town Transit (9TT).

The Estuary Transit District is governed by a board of directors. Each member town appoints one representative who serves in a voluntary capacity to adopt policy, set budgets, and conduct long-term planning for the district.

Four deviated fixed routes of 9TT serve the main corridors of the region and provide connections to public transit providers serving the surrounding regions. In addition, 9TT provides door-to-door service throughout all nine towns of the Estuary region as well as the towns of Durham, East Haddam, and Haddam through its Dial-A-Ride service. All 9TT services are open to all persons with no age or disability restrictions.

The services of 9TT are subsidized by federal, state, and local funding. This allows for inexpensive fares of \$1.75 for deviated fixed routes and \$3.50 for Dial-A-Ride. 9TT also receives a Title III grant through the area agency on aging, which allows area senior citizens to ride any ETD service on a donation basis in lieu of the fare. We provided more than 100,000 passenger trips during the fiscal year, more than doubling the annual trips provided just seven years ago. Though 9TT has continued to grow senior ridership, 80 percent of all trips are made by persons below 60 years of age, and over half of all trips are employment related.

There was a 2 percent decrease in funding for 9TT by the state in the fiscal year. This reduction will impact levels of service provided. Conversely, 9TT was also notified that it was successful in obtaining funding for new fixed-route service between Madison and Middletown. The service will begin in the 2017-2018 fiscal year.

The district was able to conduct a needs assessment and site selection for a new operating and maintenance facility for the district. This is the first step in obtaining a permanent facility after over thirty-five years of service to the shoreline community.

9TT successfully transitioned from rural to urban funding from the Federal Transit Administration. This has resulted in significantly more administrative responsibilities along with the largest one-year capital allocation in the district’s history. This new funding source will provide continued access to capital projects that were not previously possible.

Board of Directors

<i>Name</i>	<i>Town</i>
Peter Bierrie, <i>Vice-Chairman</i>	Essex
Noel Bishop	Westbrook
John Forbis, <i>Treasurer</i>	Old Lyme
Joan Gay	Killingworth
Roland Laine	Old Saybrook
Angus McDonald	Deep River
Leslie Strauss, <i>Chairman</i>	Chester
Susan Tyler	Lyme
Virginia Zawoy, <i>Secretary</i>	Clinton

Administrative Staff

<i>Name</i>	<i>Position</i>
Joseph Comerford	Executive Director
Jamie Bohli-Cormier	Operations Manager
Halyna Famiglietti	Finance Manager

Facilities Management

Phil Parcak

Facilities Manager

As the new facilities manager for the Town of Old Lyme, I am responsible for the maintenance and repairs on all existing town-owned buildings. My goal is to provide consistency in the condition of our buildings, long-term budget planning, and fewer “emergency repairs.”

The facilities manager reports directly to the first selectwoman and has also updated the board of finance on unusual maintenance items. In my first year on the job, I have performed building assessments on all of our facilities and accomplished a great deal. Some highlights include the following:

Town Hall

- The existing circulators that were improperly installed were removed and new variable-speed circulators were installed at four locations within the mechanical room.
- The exterior of the facility was properly maintained – power-washed, repaired, primed, and painted.
- The HVAC system was cleaned and maintained; one A/C coil was replaced.
- World Energy conducted an energy audit, with recommendations for energy-efficient upgrades to lighting and other components. Upgrades are occurring on an as-needed basis.
- The communication system for the areas of refuge was tested and repaired.

Senior Center

- The outdated A/C system was replaced with an energy-efficient heat pump system, which is programmable and can be remotely monitored.
- The drains in the kitchen area were upgraded to be compliant with the health code.
- Miscellaneous repairs were made to doors, etc.
- Aging toilets were replaced with ADA-compliant fixtures at two locations.

Transfer Center

- Safety enhancements were improved to comply with DEEP and OSHA requirements.

Public Works Department

- A temporary solution was developed to address truck washing at the facility.
- A permanent, compliant truck-washing system was developed with the help of engineers.
- Input was provided on planned repairs for the Mile Creek Road bridge over the Black Hall River for both immediate, corrective safety improvements and design on planned replacement.

In addition, I have worked closely with the Director of Parks and Recreation, the fire chief, and the resident trooper on needs for their respective buildings. We will all continue to work together, with a focus on developing clear, long-term budgets for all of our buildings. It has been a very busy first year in the office of the facilities manager.

David W. Roberge
Fire Marshal

During the fiscal year 2016-2017, minimal damage from the effects of fire was experienced. There were no losses of life and only a small amount of structural or fire vehicle equipment damages was reported.

Building inspections for commercial and public buildings continue annually to ensure compliance of their occupants. The annual fire safety inspections of occupancies prescribed by the Fire Code as set forth in Chapter 541 of the Connecticut State Statutes continues along with plan reviews of new commercial construction projects in town. We anticipate continued cooperation from the property owners and contractors to ensure full compliance with provisions of the code.

Many thanks again go out to the Old Lyme Fire Department for their timely and effective responses to fire emergencies and for all they do to educate the community on effective fire safety.

As part of state-mandated continuing education, the fire marshal attended various in-service education programs sponsored in part by the Office of the State Fire Marshal, the International Association of Arson Investigators, and the National Association of Fire Investigators.

Florence Griswold Museum

Jeffrey Andersen
Director

The town of Old Lyme – including the Florence Griswold Museum – faced the gravest threat to its future in many decades when town leaders were blindsided by the news that the Federal Rail Administration (FRA) was proposing to construct a high-speed rail corridor, forty feet in height, right through the center of the Old Lyme Historic District. I can't tell you how alarming this was to all of us at the museum. As an organization dedicated to preserving the town's artistic and cultural heritage, this proposal threatened to negate all that we – and the town's citizens – stood for.

Of course, this wasn't the first time the town faced such threats. In the 1950s, the town was essentially divided in half by the construction of the Connecticut Turnpike (I-95). Old Lyme paid a heavy price back then, all in the name of progress. But the threat of the railroad actually goes back to the 1840s. On August 13, 1841, Florence Griswold's mother, Helen Powers Griswold, sent a letter to her husband, Captain Robert Griswold, while he was away at sea. She

wrote her husband that "the Commissioners for the Rail Road have been surveying the route for a day or two past and it is now thought it will go back of our Barns, how will you approve of that dear, I should think it more desirable than to have it in front, I suppose however our thoughts upon the subject are immaterial."

I suppose however our thoughts upon the subject are immaterial. That is exactly how many of us felt. We knew that it would be difficult if not impossible to influence the government to change its plans. But we had to try. In February 2016, the Florence Griswold Museum hosted a press conference with local leaders, elected representatives, and community activists. The press picked up on the community's concerns and word began to get out. Over 500 people showed up for a meeting with FRA representatives at the Old Lyme High School in August 2016. Over 1,300 residents from the region sent in comments expressing their outrage to the FRA. Gradually, concern extended to many towns along the shoreline of Southeastern Connecticut

Florence Griswold Museum *(continued)*

into Rhode Island. A grassroots coalition of leaders from the Town of Old Lyme, led by First Selectwoman Bonnie Reemsnyder -- community activists like Gregory Stroud of *secoast.org*, our entire state and federal delegations, local and statewide preservation and environmental organizations, and thousands of concerned citizens -- began to work together effectively to oppose what Senator Richard Blumenthal aptly described as a “frankly half-baked, hare-brained notion.”

On July 12, 2017, in an absolutely stunning reversal, the FRA announced that it had removed the high-speed rail bypass through Old Lyme and the shoreline of Southeastern Connecticut from its recommended plan for future investments in the Northeast Corridor. What a thrilling victory for the town of Old Lyme, for shoreline residents, and for our neighbors in Rhode Island. Of course, this doesn't mean that the threat has gone away completely, for the FRA has indicated that it will conduct a study on how to address

rail improvements between New Haven and Providence. But at least we have some breathing room and time to be a part of the solution going ahead. I think it is fair to say that we all want access to rail along the Northeast Corridor but not at a drastic cost to Old Lyme's significant historic, artistic, and environmental assets.

As I reflect on this subject, I can't help but be proud of the advocacy role that the Florence Griswold Museum's trustees, professional staff, and volunteers played in helping to avert what could have been terribly damaging to the quality of life found in our town. In the end, I think what many of us learned is, in fact, that our thoughts upon the subject *are material*.

(In early 2017, Andersen announced that, after forty years of service, he would be retiring from his position as director of the Florence Griswold Museum upon the appointment of his successor. This is his last town report.)



larence Griswold on the grounds of her family home in Old Lyme. Now the setting for the Florence Griswold Museum, this National Historic Landmark welcomes over 80,000 visitors each year to discover for themselves the town's significance as a center for American art. (Lyme Historical Society Archives)

Harbor Management Commission

Steven A. Ross
Chairman

Ned Farman
Vice Chairman

Meetings: Second Tuesdays except Aug., Dec., & Feb., 7 P.M., Memorial Town Hall. All are welcome.

Progress Along the Waterfront

The Harbor Management Commission (HMC) of Old Lyme serves a sort of zoning function from the high water mark seaward; thus, adjacent waterways are designated for appropriate use in Old Lyme's Harbor Management Plan, which was conceived and amended in coordination with public agencies, primarily Connecticut's Dept. of Energy and Environmental Protection (DEEP).

A key component of the Harbor Management Plan is our Dock Standards. In light of their not having been studiously reviewed since 2009, the commission is currently undertaking that task, with a particular eye towards structures with a less-than-minimal visual impact. (The entire Harbor Management Plan can be found on the town website.)

The commission has been active, per usual, in other areas. The Town Dinghy Dock was inspected and some maintenance was performed under the leadership of Assistant Harbormaster Mike Mackey; worn and broken brackets were replaced. The dock is in good shape. Commission member Mike Magee continues to lead the effort to keep the Pilgrim Landing site relatively debris-free and accessible to as many small vessels as possible.

A major ongoing task of the HMC is monitoring our mooring fields. We have managed to sharply reduce the number of moorings without permits. We have also tweaked the town website in a more user-friendly direction for mooring holders with updated information and a mooring permit application that can be completed online.

With the growth of person-powered craft in our area, such as kayaks and paddleboards, the commission reminds users that safety equipment must be a part of every recreational outing.

The HMC remains very interested in the development of the site across from Morning Glory on the Lieutenant River. John McDonald is our representative on the Halls Road Improvement Committee. Potential use of the site might involve an ADA-accessible ramp and platform to facilitate hand-launched watercraft, crabbing, or fishing without further degradation of the riverbank.

The Harbor Management Commission, an active member of the Connecticut Harbor Management Association, has an open position for an alternate member.

Historic District Commission

Dr. John E. Pfeiffer
Chairman

Meetings: First Mondays, 9:00 A.M., Memorial Town Hall

The charge of the Historic District Commission (HDC) is to maintain the historic integrity and aesthetic character that is the result of almost 350 years of our ancestors' visions, passions, and achievements.

Our town, founded in 1667, and the Historic District have been the center of both commercial and residential activity since the days of our founders. The homes, barns, sheds, and other outbuildings as well as pathways and roads are a local, state, and national resource that deserves protection. The town initiated such protection in the early 1970s by establishing the Old Lyme Historic District. The district was then adopted by the State of Connecticut and placed on the National Register of Historic places.

As a steward agency, the Historic District Commission has the job of trying to preserve what lies within the bounds of the district. To that end we strive to be partners with those who reside as well as work and have businesses within our district. The district is not a museum attempting to preserve a past moment or a static reflection of the "way it used to be." Rather, it is alive and ever changing. Our job as stewards of the Historic District is to help guide change so that it is in keeping with past styles and traditions.

To be most effective, projects should be reviewed at the planning phase. Residents must come before the commission if there are proposed changes to structure or grounds. We have a handbook and maintain a website to make this process easier. Anyone with a project within the district is also directed towards the Historic District Commission when applying for permits from the town building, planning, and zoning departments. To satisfy the zoning enforcement officer, applicants must obtain a Certificate of Appropriateness (CofA) from the Historic District Commission.

This past year the Old Lyme Historic

District Commission was an active participant in opposing the Federal Railroad Administration's proposed plan to put a high-speed rail "bypass" through Old Lyme's business center and Historic District. The FRA's decision to eliminate the Old Saybrook to Kenyon, Rhode Island bypass was released in July 2017, which is after the period covered by this report.

The Historic District Commission approved the following projects in the Historic District from July 1, 2016 to June 30, 2017:

1. 59 Lyme Street, Lymes' Youth Service Bureau, Little Free Library
2. 55 Lyme Street, Old Lyme Historical Society, Propane tank and AC unit screening
3. 32 Lyme Street, Cynthia Taylor, Garage roof replacement
4. 85 Lyme Street, Old Lyme Inn, New roof on outbuilding
5. 30 Lyme Street, Anthony Kornacki, Solar panel installation on roof

The HDC has a historic plaque program to identify the original builder and date of construction for any structure in town built before 1939. So far, forty-one properties in Old Lyme have historic plaques, and several more are in process. Application forms may be obtained from the HDC at the town hall and are available on the Town of Old Lyme's web page under Boards and Commissions/Historic District.

Please remember that we are all in this together. The commission is made up of community volunteers. Our charge came from the voters of the Town of Old Lyme. We view that charge as a responsibility to you. Thank you for your continued support.

Ledge Light Health District

Stephen Mansfield REHS, MPH
Director of Health

smansfield@llhd.org
860-448-4882, ext. 1307
www.llhd.org

Ledge Light Health District (LLHD) serves as the local health department for the municipalities of Ledyard, East Lyme, Groton, Waterford, Old Lyme, Stonington, North Stonington, and New London. The LLHD team, composed of experts in administration and finance, environmental health, communicable disease prevention, and health education and community outreach, work cooperatively to promote healthy communities and ensure that healthy opportunities are available to everyone.

Environmental Health

LLHD inspects food-service establishments to ensure they are compliant with the Connecticut Public Health Code. We work with these local businesses to implement comprehensive food-safety practices and provide food-service education programs. LLHD also inspects temporary events; public pools; and cosmetology, day care, and lodging establishments to ensure these entities are taking measures to protect the public health. We also visit residential and commercial properties in response to complaints or concerns raised by the public. LLHD is also responsible for assuring that our coastal and inland waterways are safe for recreational activities. We work with our local shellfish commissions to assure that our waters are safe for shell fishing and conduct weekly inspections and water sampling at all our beaches.

Our environmental land-use staff conduct soil testing, plan reviews, groundwater monitoring, and construction inspection activities for building lots served by on-site septic systems and/or wells.

Communicable Disease Prevention & Preparedness Activities

LLHD holds annual vaccination clinics, educates the public about infection prevention and control practices, and investigates reports of communicable and/or infectious diseases, such as tuberculosis or foodborne illnesses. LLHD provides support to schools and long-term care facilities during reported outbreaks to help prevent the spread of illness. We provide free flu drive-thru vaccinations in our municipalities. These clinics allows us to test our plans to effectively deliver prophylaxis to many people in a short amount of time. LLHD works closely with municipal and regional partners to prepare for and respond

to emergency situations. These activities include participation in the Millstone exercises, working with local partners to develop Continuity of Operations and Closed Point of Dispensing plans, and recruiting and training volunteer members of the Medical Reserve Corps.

Health Education & Community Outreach

LLHD engages and supports the communities we serve in health education, health promotion, and health-policy development activities in a variety of ways. These efforts draw on scientific, evidence-based best practices to ensure that the programmatic processes involved make efficient use of taxpayer dollars while achieving measurable and desired changes in our population's overall health and resilience. LLHD works diligently to secure external funding to support these activities and supplement our municipal members' contributions.

Community Health Needs Assessment (CHA) and Improvement Plan (CHIP)

LLHD and Lawrence + Memorial Healthcare have been co-chairing the Health Improvement Collaborative of Southeastern Connecticut, a multi-sector coalition. The collaborative established action teams selected strategies and began implementing programs and advancing policies to address each priority area. In the next year, the collaborative will begin evaluation processes and make course corrections as new issues emerge. Once again, the Data Haven Wellbeing Survey will be the core primary data collection mechanism that will feed into the assessment.



Ledge Light Staff

Lyme-Old Lyme Chamber of Commerce

Olwen Logan
President

Joann Reis Lishing
Vice President

email@lolcc.com
www.VisitOldLyme.com

Meetings: Third Wednesday evenings, locations vary

The Lyme-Old Lyme Chamber of Commerce meets on the third Wednesday of each month for networking among business professionals in our towns at dinners or Business After Hours events. Our mission remains unchanged in its focus to be a vibrant organization actively supporting and promoting local businesses and the community.



At our annual meeting in June 2017, outgoing President Mark Griswold was honored for his service for the previous two years, during which he gave countless hours towards the board's objective of creating a more business-focused organization.

The chamber was proud to be a partner in the 2016 Midsummer Festival. We hosted a vendor mart on the field across from Lyme Academy College of Fine Arts for chamber members and selected nonmember vendors, and we presented musical entertainment all day. We are indebted to the college, which graciously provided the field for the day.

Congratulations to Olivia Ellis (Lyme-Old Lyme High School Class of 2017) and Sophie Christiano (Loomis Chafee Class of 2017). Olivia was the recipient of the chamber's 2017 Business Leader Senior Scholarship. Sophie received a Special Certificate of Recognition for her work on the Lyme-Old Lyme Volunteer Connection, which contributed so much to the Lyme and Old Lyme communities.

This year, the chamber began a Business Student of the Month award to continue the chamber tradition of recognizing members of the junior class for demonstrating outstanding initiative in and out of the classroom. This award

represents the next chapter of the **N. Rutherford Sheffield Memorial Award for Entrepreneurial Promise & Achievement**, established for Lyme-Old Lyme High School juniors in 1999 as a way to honor Mr. Sheffield, a member of the chamber for over fifty years, who was highly regarded in our Lyme-Old Lyme community. More than 30 juniors at Lyme-Old Lyme High School received **N. Rutherford Sheffield Memorial Awards**. In the inaugural year of our Business Student of the Month program, we were able to recognize the achievements of Lyme-Old Lyme High School juniors Amanda Marsh, Cole Hamparian, and Reed Spitzer. Congratulations to all!

Details on our scholarship program are available in the Lyme-Old Lyme High School Guidance Office and on the chamber's website.

In the coming year, the chamber plans to collaborate with chamber member realtors to launch "Wake Up to Lyme-Old Lyme." This initiative is a revitalization of the popular Welcome Wagon. It is our way to welcome newcomers to our towns, opening new doors for them and showcasing our businesses to potential new customers. If you would like to participate in this exciting venture, please contact the chamber.

We always welcome new members to the Chamber. If you are thinking about becoming a member, please come to any meeting as a visitor. We would be delighted to demonstrate how much membership at just \$50 per year has to offer and how it can benefit your business. For information about meetings, member, and Chamber-sponsored events, visit the Chamber website at *www.VisitOldLyme.com*. You can also sign up for our e-newsletters on the website. Please don't forget to **Buy Local** to support all the businesses in our community.

Lyme-Old Lyme Chamber of Commerce *(continued)*



From left to right, back row: State Rep. Devin Carney, Lyme-Old Lyme Chamber President Mark Griswold, State Senator Paul Formica; front row: Old Lyme Selectwoman Mary Jo Nosal, Lyme-Old Lyme High School Business Department Chair Leslie Traver, Lyme-Old Lyme Chamber Business Students of the Month Cole Hamparian and Reed Spitzer, Old Lyme First Selectwoman Bonnie Reemsnyder, and Lyme-Old Lyme Chamber Scholarship Chairman Russ Gomes. Missing from photo: Lyme-Old Lyme Chamber Business Leadership Senior Scholarship winner Olivia Ellis, Lyme-Old Lyme Chamber Special Award winner Sophie Christiano, Lyme-Old Lyme Chamber Business Student of the Month Amanda Marsh, and Lyme-Old Lyme High School former Business Department Chair Dr. Joanne Hedwall.

Lyme-Old Lyme Education Foundation

Mary Stone
President

Robert Roach
Vice President

Sheila McTigue Ward
Secretary

Daniel Hagan
Treasurer

The Lyme-Old Lyme Education Foundation (LOLEF) is an independent, nonprofit, 501(c)(3) charitable organization established in 2006 to enhance education for all ages and sectors of our community. A volunteer board of directors from Lyme and Old Lyme governs us.

Our mission is to create or enhance valuable educational programs above and beyond those traditionally provided by the Lyme-Old Lyme Public Schools. We align our work with the district's strategic planning process in order to encourage innovative and effective learning

opportunities for students of all ages, from preschool to senior citizens.

LOLEF raises and distributes funds to improve and expand enrichment programs, support innovative teaching and learning, and build educational partnerships between our students and our community. To date, LOLEF has raised and distributed over \$180,000 to fund new curricula throughout our community.

To submit a grant for review, please visit our website for guidelines and download an application: www.LOLEF.org.

(continued next page)

Lyme–Old Lyme Education Foundation *(continued)*

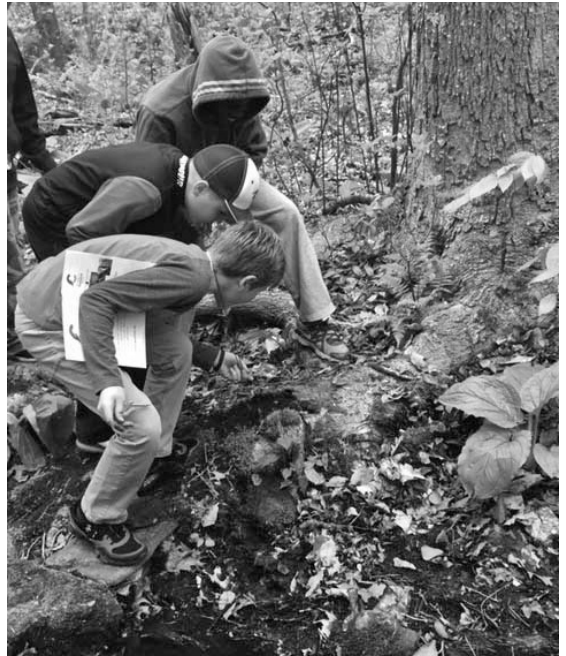
Major LOLEF Grants of 2016–1

- “**Science in Nature**,” taught through Old Lyme’s Roger Tory Peterson Estuary Center, provides third, fourth, and fifth graders at Mile Creek and Lyme Consolidated Schools the opportunity to use real scientific equipment in field studies at the nearby Mile Creek and Eight Mile River Preserves. They are taught to make observations about environmental factors and wildlife habitation. This program also introduces their teachers to Next Generation science standards.
- Students are discovering **science, technology, engineering, and math (STEM) curriculum in grades six, seven, and eight** through introductions to chemical engineering, environmental landscaping, bioengineering, and green engineering. The foundation also funded a grant for a 3-D printer and the coordinated curriculum in architectural engineering, wood production, and technical writing.
- Students in all grades can discover the world through a **Google Expeditionary Technology classroom**. Twenty sets of virtual-reality gear enable students and their teachers to explore a wide variety of subject areas such as biology, anatomy, the physical sciences, history, and geography. This “classroom” serves all our schools and is suitable for all ages.

Community Fundraising Events in 2016–17

- **Bound for the Sound Road Race**
5k, 10k and 1-Mile Fun Run
Held each September
- **Warren Miller Ski Film**
Held in December
- **Annual Community Appeal**
 - Contributions in any amount are gratefully accepted and are fully tax deductible:
 - on our website: www.LOLEF.org
 - by mail: P.O. Box 895, Old Lyme, CT 06371
 - by event sponsorship and attendance.For more information on our fundraising events, please see our Facebook page: Lyme/Old Lyme Education Foundation.

We are overwhelmed by your generosity and grateful for all you do to support education in the Lymes!



As part of "Science in Nature," students use magnifying lenses to examine and identify plants.



After field observation, students then describe and draw their observations in their journals; in this case, the subject included feathers.

Lyme-Old Lyme High School

Forty-Fourth Annual Commencement • June 15, 2017

Candidates for Diplomas

Graham Miller Aird λ ω	Rachel Elizabeth Hayward λ ω	Jenna Rose Peduzzi
Patrick Tooker Ames	Hayden Riley Hendrik ω	Austin Jay Pritt
Philip John Arruda	Nickolas Daniel Herrera	Lauren Murray Quaratella λ ω
Spencer David Avery	Emma Jean Hoyt ω	Daniel Thang Comerford Reid λ ω
Grace Elizabeth Basler λ ω	Ian Graham Humphreys	Olivia Wood Reneson λ ω
Abigail Elizabeth Berger λ ω	Lily Qing Yu Iannitti λ ω	Ava Kristine Restrepo
Margaret Grace Berger λ ω	Benjamin Ryan Jackson	Caeli Anne Rice λ ω
Byrnes Buckley Berglund	Cairo Alexander Jenkins	Camron John Roberts λ ω
Avery Baer Bikerman ω	Dimitrios Jones	William Rae Roberts λ ω
Mary Ava Bolles	Matthew John Kane ω	Natalie Jane Rugg λ ω
Lauren Julia Boulay ω	Christopher Douglas Kirk	Kadison Colwell Russell
Garrett Alexander Burdick	John Corey Kneppshield λ ω	Brittany Anne Santiago
Ethan Foley Bushy	Brianna Renee Knight	Matthew Vincent Sapere III
Shelby Dominique Bussolotti	Callie Wills Kotzan λ ω	Lauren Tiffany Schillawski
Jennifer Leigh Cameron	Tessa Alexandra Kroes λ ω	Olivia Meyer Schumacher λ ω
James Thomas Coburn	Patrick Trainor LeRoi	Skyelar Elizabeth Shaw ω
Daniel Thomas Cole λ ω	Joseph James Lester	Peter Wesley Shoemaker
Max Every Conley	Jack Christopher Machnik	Rachel Francesca Sielbeck
Morgan Yvonne Constantinou	Haley Alexis Mahon λ ω	Marissa Renee Smith λ ω
Brooke Marie Courtney	Norman Michael Main	Jacob Robert Stack
Sydney Lynn Cowell λ ω	Daniel Frank Marinelli ω	Cody Matthew Stalls
Adam George Czarnecki λ ω	Matthew Kenneth McCarthy λ	Noelle Christina Stanland λ ω
Rose Ruth Datum ω	Megan Brighton McCarthy	Everett Burghard Steiner
Lauren Michelle Dolishny	Aidan Peter McHugh ω	Ava Rose Sullivan
Maria Rose Donato λ ω	Daniel Patrick Melchreit	Tanner John Surton
Alexandra Marie Duddy λ ω	Francesca Vanni Melluzzo	Mackenzie Alyssa Swaney λ ω
Cole Edward Dushin λ ω	Anna Mae Mesham λ ω	Sara Elizabeth Urbowicz ω
Meredith Helen Duxbury	John Braxton Miller	Rachael Elizabeth Coe Vandette
Sophie Emilia Edson λ ω	Julia Rae Morrison ω	Jordan Michael Warecke
Alexander Owen Edwards ω	Julian Howard Muller III λ ω	Sophie Warlitz λ ω
Devin Jacob Edwards	Allison Paige Murphy λ ω	Laura Lee Wayland λ ω
Olivia Margaret Ellis	Kevin Colburn Murphy ω	Brendan Tyler Wright λ ω
Victor Robert Farrell	Kiran Durgesh Nadkarni ω	Jeffrey Guo Zhang λ ω
James Ralph Fogle	Bailey Jane Nickerson	
David Jake Foster ω	Caleigh Marie O'Neil λ ω	
Hunter Joseph Friel λ ω	Peyton Hempstead Ogden	
John Chauncey Gibson	Jacob Forder Olson λ ω	
Julie Erin Golebiewski	Ethan Brett Owen	
Ion Christian Ramos Gordon	Dean Stanley Palenski	
Alexandra Lockwood Gourlay λ ω		
Everett Dolan Grethel		
Brennan Marshall Griffin ω		
Anthony Leon Gryk		
Hannah Shea Guenther λ ω		
Aliza Eve Hackling		
Quinn Steven Hallahan		

λ Member National Honor Society, Gold Honor Cord
ω Academic Letter Recipient

Lyme-Old Lyme High School *(continued)*

CLASS OFFICERS

Callie Kotzan	President
Matthew McCarthy	Vice President
Graham Aird	Secretary
Jacob Olson	Treasurer
Sophie Edson	Class Historian

REGIONAL SCHOOL DISTRICT EIGHTEEN BOARD OF EDUCATION

Michelle Roche, *Chair*
Erick Cushman, Richard Goulding, Beth Jones, Diane Linderman,
Nancy Lucas Edson, Mary Powell St. Louis, Jean Wilczynski, Stacy Winchell

ADMINISTRATION

Ian Neviaser, *Superintendent*
James Wygonik, *Principal* Jeanne Manfredi, *Assistant Principal*

CLASS ADVISORS

Brett Eckhart, *Head Advisor*
Karen Duhamel, Jonathan Goss, Allan Honer, Kirk Kaczor, Emily Kelly, Jessica Ninteanu,
Barbara O’Leary, Kristine Pekar, Christina Todd, Leslie Traver, Lucy Trost, Jacob Wilson

FACULTY

William Allik, Jennifer Burke, Courtney Carbone, Sonja Charpentier, Erin Crayton, Elizabeth Daly,
Michael Dauphinais, Aron D’Aquila, William Derry, Karen Duhamel, Brett Eckhart, Winifred Edmed,
Glenn Elliott, Heather Fried, Jonathan Goss, Hildie Heck, Joanne Hedwall, Allan Honer, Sarah Hylas,
Kirk Kaczor, Marci Kania, Dawn Kelley, Emily Kelly, Tanya Lane, Barbara Leen, Tracy Lenz, Brett Lillie,
Emily Macione, Elizabeth Matis, Helen McDonald, John McGannon, James Motes, Jessica Ninteanu,
Leslie O’Connor, Barbara O’Leary, Courtney Payzant, Kristine Pekar, Mark Popeleski, Adam Raiti,
William Rayder, Jill Ressler, Colleen Rodriguez, Marybeth Schreindorfer, Elizabeth Shoudy,
Christina Todd, Leslie Traver, Lucy Trost, Juan Vazquez-Caballero, Adrienne Viscio, Lucy Walter,
John Wang, Joanna Williams, Jacob Wilson, Megan Winski, Louis Zubek

CLASS MARSHALS

Una Barrett, Madeline Zrenda

Lyme-Old Lyme Veterans of Foreign Wars Post 1467

Ed Shyloski

Post Commander

05ecsjsret@gmail.com, 860-917-7152

Center

Lyme-Old Lyme Veterans of Foreign Wars Post 1467 includes men and women who served the United States in combat zones. We have eighty-one members from Old Lyme and Lyme but others are from surrounding towns and seven states and include war veterans of WWII, Korea, Vietnam, Iraq, and Afghanistan. Chartered some twenty-six years ago, our VFW Post's motto is, "We own no bar, no building; we just do good works!" Monthly meetings are held at the Old Lyme Senior Center every 4th Monday except January and February for a 6 p.m. catered dinner and a 7 p.m. hour-long meeting.

Our VFW's main mission is to provide temporary monetary assistance to defray the costs for veterans in distress. Our Vets-In-Need Program temporary assistance recommendations are first reviewed and approved by our Board of Trustees before payments are made. Some 2017 examples are as follows: wheel chairs, gas cards, back and forward apartment rents, wheel chair batteries, school lunch payments, car repair, medical costs, two wheel chair ramps, public transportation, gutter repair, shared car purchase, apartment lease, license renewal, vehicle registration, and brake repair. We also contribute significant funds each year to the West Haven VA Hospital, for example, the PTSD Giant Steps Art & Music Therapy programs, the VA Blind Center, and the Fisher House at West Haven. We also make contributions to the VFW National Home in Wisconsin for indigent veterans families.

Some of our contributions are in the form of offering leadership by example to our youth and providing community leaders our support. We support the Old Lyme High Hopes horse riding therapy program for veterans' mental health therapy, the New London High School Junior ROTC program, Duck River Memorial Day cemetery flags replacement, Memorial Day Parade cost, Little League Baseball, and Lymes' Boy Scouts of America. A number of our members also serve with the CT Veterans Honor Guard at funerals in Southeastern Connecticut.

www.vfw.org

*Meetings: Fourth Mondays March through November
6:00 P.M. dinner, 7:00 P.M. meeting, Lymes' Senior*

The L-OL VFW Post supported the LOLHS Band and Chorus for their 2017 Pearl Harbor trip, and each year we support Lyme-Old Lyme schools' Veterans Day programs with VFW Voice of Democracy and Patriots Pen essay contests. These contests can lead to winning huge National VFW scholarships!

The Lyme-Old Lyme VFW Post 1467 Junior Vice Commander, Douglas Wilkinson, organizes our annual VFW Buddy Poppy Program for Relief funds. VFW Senior Vice Commander, Navy CPT (Ret) Larry Olsen chaired our annual fall "God Bless America" benefit to fund non-relief programs. Saint John's Episcopal Church, Essex Military Ministry, and the Shoreline Ladies Golf Association have witnessed the results of our Vets-In-Need temporary assistance and have contributed heavily to funding our VFW's Relief aid to fully-vetted military veterans and their immediate families in distress anywhere in Southeastern Connecticut.

Combat veterans should really consider joining our post, which serves the less fortunate area military service members but also to enjoy the comradeship of fellow veterans. Go to vfw.org and join VFW Post 1467 Lyme-Old Lyme.



Local veterans participate in a Veterans Day ceremony at Memorial Town Hall

Lymes' Senior Center

Stephanie Lyon-Gould
Director

www.seniorcenterct.org

Lymes' Senior Center serves our senior community ages sixty and over and offers a variety of educational courses, art classes, health and exercise programs, entertainment, various special programs, games, baby-boomer activities, hiking, lunches, day trips, cruises, overnight trips, and much, much more. Lymes' Senior Center is open from 9:00 a.m. to 3:00 p.m. Monday through Friday, with some evening and weekend programs. Please check the monthly newsletter or our NEW website www.seniorcenterct.org for specific times. Newsletters get sent to all members. Membership is \$5.00 a year. Please feel free to contact Stephanie Lyon- Gould, Director, at (860) 434-1605 ext. 240 or stop by this beautiful facility and grounds if you have any questions.

Listed below are just some of the highlights of the 2016-2017 Fiscal Year:

New Programs and Services added this year

- PiYo Class (Pilates/Yoga Class)
- Gentle PiYo Class
- Beginner line dancing classes
- Ballroom/ Latin line dancing classes
- Memory Screening
- Senior Police Academy
- CPR and AED demonstrations
- Foot-care clinics
- Mah- jongg
- Chess lessons/Competitive play
- Women's Support Group

Program Statistics

- 11 exercise and dance classes per week
- 8 games a week, such as card, domino, Wii bowling, bingo, chess
- 5 special luncheons throughout the year
- 3 art classes/art workshops a week
- 20 day trips/5 overnight trips and cruises throughout the year
- 21 health programs/lectures throughout the year
- 20 historical/educational lectures throughout the year
- 29 musical programs throughout the year
- 11 computer classes

Services offered at the center include hearing clinics, haircuts, foot-care clinics, reflexology, flu shots, blood pressure clinics, nursing advice, and AARP safe driving classes.

2016-2017 Board of Directors

Sue Campbell – President
Ruth Young – Vice President
Nancy Campbell – Treasurer
Dot McAndrew – Secretary
Diane Blackwell, Diana Seckla, Mary Miles,
Johnny Cody, Ann Griffith, Gary Weed,
Doris Johnson, Jeri Baker, Joan Bonvicin,
Kathy Lockwood

Below: Lymes' Senior Center Nonagenarians, 2017



Lymes' Youth Service Bureau

Mary V. Seidner
Director

59 Lyme Street ~ P.O. Box 589
Old Lyme, CT 06371

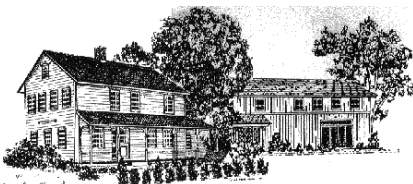
(860) 434-7208
www.lysb.org

The mission of the Lymes' Youth Service Bureau (LYSB) is to empower and enrich the lives of youth and families in our community through a wide range of innovative and effective programs.

LYSB proudly serves as the primary youth-serving organization for our community, promoting positive youth development through programs and services to children and families in Old Lyme and Lyme. Founded in 1978 by a group of concerned citizens, LYSB is one of 100 Youth Service Bureaus in Connecticut. Most YSBs are municipal agencies. However, LYSB is one of only a handful of private nonprofit agencies and therefore relies on the generous support of the community for nearly one half of our budget. We are grateful to the Town of Old Lyme for their municipal support, and we enjoy collaborating with the town and schools on a variety of programs.

LYSB continues to collaborate with our local prevention coalition, Community Action for Substance Free Youth (CASFY). This group comprises community leaders, parents, teachers, and students that advocate and support our youth through education, communication, and participation. CASFY's goal is to reduce substance abuse among the youth of Lyme and Old Lyme and to positively affect the culture of student life. We meet on the first Tuesday of the month at LYSB at 7:00 p.m. and welcome attendance from any members of the community. Results from the recent Youth Survey and more information about CASFY are available on the LYSB website www.lysb.org.

A new initiative this year is the Lyme-Old Lyme Mentoring Program. Adult mentors from the community are paired with middle-school students. Mentoring can improve attitude and school attendance, promote self-respect, and build skills for the future. We are looking for more mentors and encourage interested citizens to contact LYSB to learn more.



At LYSB students can relax in a safe and supervised environment after school. We offer games, snacks, homework help, and friendship. Please visit our website www.lysb.org or stop by our offices at 59 Lyme Street to learn about the youth programs we offer in the following areas:

- Early childhood
- Parent education
- After-school programming
- Counseling
- Juvenile Justice
- Social service referrals
- Community service
- Mentoring
- Prevention
- Summer programming
- Holiday Giving

LYSB Board of Directors

Cyndi Miller Aird, *Chairman*
Michael Boardman, *Treasurer*
Trudy Burgess
Liz Frankel, *Secretary*
Katie Gingras
Anna Grenier
Susie Kelly
Tiffany Kleefeld
Ryan Lee
Brynn McGlinchey, *Youth Member*
Ritz Nichele
Shane O'Brien
Leslie O'Connor, *Vice Chairman*
Erik Olsen, *Vice Chairman*
Jacob Olsen, *Youth Member*
Jamie Snurkowski
Tom Strycharz
Tammy Tinnerello

LYSB Staff

Lisa Buckley, *Administrative Assistant*
Missy C. Garvin, *Youth Programs Coordinator*
Mary V. Seidner, *Director*
Natasha Kennedy, LCSW, *Youth and Family Counselor Consultant*
Christine Poscich, *Prevention Coordinator*
Arleen C. Sharp, *Parent Resource Supervisor*

Lymes' Youth Service Bureau *(continued)*



Kids in our chill-out summer program enjoying a cool treat on a hot day



A few little admirers of Miss Margie, our music playgroup facilitator



Children enrolled in the elementary after-school pro-gram enjoying a nice fall day on the LYSB playground



Active members of our CASFY coalition (Community Action for Substance-Free Youth), left to right: Katie Balloca, Meredith Britton, Emily O'Brien, Brynn McGlinchy, Tracy McGlinchy, and Patty Courmoyer.



The green bags are filled with Halloween candy that our YAC (Youth Advisory Council) collected and then delivered to houses within the village before Halloween. The candy was donated by members of the community as a thank you to those who provide candy for so many trick or treaters on Halloween night!

MacCurdy Salisbury Educational Foundation, Inc.

Rowland Ballek
President

www.maccurdysalisbury.org

The MacCurdy Salisbury Educational Foundation, Inc. was started in 1893 by Evelyn MacCurdy Salisbury to help support the school system in Old Lyme. After Evelyn's death in 1919 it began offering grants to Old Lyme students going on to college. When the Lyme/Old Lyme school districts regionalized in 1973 a fund for Lyme students was added thanks to a gift by Berenice "Bunny" Brevillier. These two funds were merged into one fund in 2016 to reflect the requirements outlined in our revised Certificate of Association filed when we became a Public Foundation supporting Regional District 18 in 1998.

Foundation awards are limited to students residing in Regional District 18 and are based on the degree of financial assistance a student requires to meet their college expenses. If a student keeps a satisfactory grade point level they will continue to receive the same award for an additional three years of their undergraduate studies.

Foundation awards for the 2016 – 2017 academic year totaled \$243,050 and went to 77 students from Lyme and Old Lyme. Projected awards for the upcoming 2017 – 2018 academic year total \$279,250 for 89 local students.

Two new members were elected to the MacCurdy Salisbury Educational Foundation at its annual meeting held at the Old Lyme Memorial Town Hall on September 15, 2016. They were Fred Behringer from Old Lyme and Thomas Richardson from Lyme. Two members were elected to the Board of Directors for a three-year term: Matthew Griswold XI and Dr. Gregory Hack. They replaced Nicki Berry and Tom Sherer, whose three-year terms had expired. Also at the meeting officers were re-elected: President Rowland Ballek, Vice President Mary Seidner, and Secretary/Treasurer Edward Perkins.

- In his report to the meeting, Secretary/Treasurer Ned Perkins said that while awards are need based and do not necessarily go to students with the highest academic records, award recipients achieve outstanding grades. He said that we do not receive grades from graduating college seniors but of the 54 underclass men and women who submitted grades, their average grade-point average was 3.30, and 22 students had a grade point average of 3.5 or higher.
- The Annual Reception the foundation



MacCurdy Salisbury Educational Foundation Award Recipients

Row 1: Natalie Rugg, Sara Urbowicz, Sophie Edson, Olivia Ellis, Megan McCarthy, and Skyelar Shaw. Row 2: Avery Bikerman, Olivia Reneson, Laura Lee Wayland, Lexi Duddy, Jacob Olson, Dean Palenski, Olivia Schumacher, Mackenzie Swaney, Caleigh O'Neil, Marissa Smith, and Danny Cole. Back Row: Zachary Moore, Everett Grethel, Ben Jackson, Byrnes Berglund, Matt Sapere, Peter Shoemaker, Cody Stalls, and Christian Swaney. Not pictured: Mary Bolles, Maria Donato, Julie Golebiewski, Hannah Guenther, Tessa Kroes, Haley Mahon, and Trevor Kegley.

MacCurdy Salisbury Educational Foundation, Inc. *(continued)*

holds each year for graduating high school students from Regional District 18 was once again held at the Lyme Art Association in Old Lyme on June 8, 2017. Awards for 29 graduating seniors totaled \$83,100. This means that this class will be eligible to receive a total of \$330,000 in grants over the next four years.

- Two \$500 awards were also presented

at the reception, the W.E.S. Griswold Valedictorian Award to Natalie Rugg, who will attend Brown University, and the Willis Umberger Salutatorian Award to Laura Lee Wayland, who will attend Yale University. Bill Griswold was president of the foundation from 1965 to 1992, and Willis Umberger was secretary/treasurer from 1966 to 1986.

Municipal Agent for the Elderly

Don Tapper, *Municipal Agent, Retired*

It has been my pleasure to serve the elderly population of Old Lyme as municipal agent for the elderly for the past twenty years. I also was administrator of Lymes Elderly Housing

from 1993 to 1999. I retired on January 1, 2017. Please call the town hall for help on elderly issues.

Old Lyme Animal Control

Lynn Philemon, *Animal Control Officer*

This year has been one of the busiest in recent years for Old Lyme Animal Control. We have had a successful and exciting year serving the town. In fiscal year 2016-2017 alone we investigated 354 complaints, which is a greater number than usual. The bite reports this year were reduced to seven! We are very happy to say that we had ninety-nine adoptions, forty pets were reunited with their owners, and we had to euthanize four injured animals.

All pets must be vaccinated against rabies and licensed by the town by June 1 of each year. Remember that the rabies vaccination is not only a good idea that may save your pet's life; it is the state law! Please also spay or neuter your pet, especially if he or she goes outdoors.

For the second year in a row, Big Y had a food drive for the animals here at Old Lyme Animal Control. We are very thankful to them and everyone who donated; donations provided food, toys, and treats for the homeless animals.

Old Lyme Animal Control would like to make the public aware of the alarming number of missing cats and kittens this year. It is not safe to leave pets outside unattended due to dangerous local wildlife. Fisher cats, bobcats, coyotes, foxes,

and hawks are just a few of the predators that have been known to go after and take small animals day and night. Always call us first if your pet is missing. If you have any questions regarding the wildlife in your area, please call us or the D.E.E.P. Wildlife Hotline at 860-424-3011.

Once again, although Old Lyme does not have a leash ordinance, the state statute mandates that all dog owners maintain control of their dogs. Please be aware of signs at parks and beaches that do not allow dogs, including White Sands, Sound View, and Town Woods Park. Old Lyme Animal Control has received quite a few complaints regarding this matter.

You can find a list of our adoptable animals at Petfinder.com and on Facebook at [https://www/facebook.com/olacct/](https://www.facebook.com/olacct/). We are located at 3 Machnik Drive, and although our office hours vary on a daily basis, we can be reached at 860-434-1605 ext. 244. Our 24/7 phone number is 860-510-1255 for emergency calls. If you don't reach us, please leave a message and we will return your call as soon as possible! We welcome you to call or stop by with any questions or concerns!

Old Lyme Area Cable Advisory Council

Catherine Frank
Council Secretary

*www.ouldlyme-ct.gov
Public Access Studio 860-434-0643*

The Old Lyme Area Cable Advisory Council meets quarterly and represents Old Lyme, Lyme, East Haddam, Haddam Neck, and Salem.

Since 2010, the council has awarded nineteen scholarships to graduating seniors from member towns planning to enter a communications program or a communications-related field after high school graduation. Scholarship awards were presented in June 2017 to Olivia Schumacher and Natalie Rugg, Lyme-Old Lyme High School graduates, and Hannah Belleville from Salem, an East Lyme High School graduate. This year, we also extended eligibility to former recipients and presented a scholarship to 2016 winner, Allison Marsh, as well. Congratulations to all!

Applications for 2018 scholarships are available through the Lyme-Old Lyme High School Guidance Office.

Programs at the Lymes' Senior Center, recorded using equipment purchased through a 2015-16 Cable Advisory Council grant, began airing on Comcast Public Access Channel 14 this year.

We awarded a similar grant to the OL-PGN library this year; we look forward to seeing library programs begin airing on the Public Access channel soon.

Do you have an idea for a local program? Perhaps your organization would like to tape a weekly or monthly program. The Comcast Public Access Studio on Halls Road in Old Lyme is available for use by individuals and nonprofit organizations from any of the towns represented by the local council. Free training on studio equipment is provided by Public Access Coordinator Lynn Perry. Phone 860 434-0643 for more information from Lynn.

Russ Gomes and I serve as Old Lyme's Council representatives. We were appointed by the Board of Selectmen. A vacancy exists for a volunteer to represent Regional School District #18. That appointment would be made by the Regional District Board of Education. Please contact the Superintendent's Office if you'd like to get involved.

We encourage people to contact us through the town hall (860-434-1605) with any questions or concerns about our cable provider.

Old Lyme Emergency Medical Service

Claire Haskins

President

860-434-0089

Meetings: Second and fourth Thursdays, 7 P.M., Cross Lane Firehouse.

Old Lyme Emergency Medical Service (OLEMS), also known as the Old Lyme South End Volunteer Ambulance Association, Inc., is proud to have provided emergency medical care for the town of Old Lyme for the past sixty-eight years. New technologies and a deeper understanding of field medicine have brought about great change in how we do things. One thing, however, has not changed and that is our primary purpose: to provide the best quality care to the people we serve.

Our job is not an easy one. Our organization has a team of EMTs and EMRs who need to be prepared for any situation. Our volunteers and paid staff are provided many hours of training to meet this need. One highlight of the year is our participation in the Connecticut EMS Expo, which is a four-day event, designed to give EMS workers a chance to learn about a variety of topics and enhance our communication with neighboring towns.

Equipment acquisition and maintenance is also critical to our ability to treat patients. We strive to maintain our vehicles and the equipment within so that they are in tip-top shape. This year we took delivery of a new responder vehicle, which will serve the community for years to come. In addition to our responder, we have three ambulances.

In the last fiscal year, OLEMS responded to 750 calls. We treated patients with medical emergencies, such as difficulty breathing, heart attack and stroke patients, and those with diabetic problems. In addition, we also treated trauma patients involved in falls and motor vehicle accidents, patients with broken bones, and the like. We also assist the fire department at structure fires and hazmat incidents and provide mutual aid ambulance service to other towns.

We simply could not do our job without the dedicated individuals who make up this organization. If you are a person who is interested in learning new things and helping the community, we would love to have you. We meet at the Cross Lane station on the second and fourth Thursdays of the month at 7 p.m. or call anytime -- 860-434-0089.

Lastly, we want the townspeople of Old Lyme to know how proud we are of our organization. Doing this job is important to us because we care about our community and know how much you trust us to do it well. Thank you all for your generous support throughout the year.

Old Lyme Fire Department

C. Ellis Jewett
Secretary

The Old Lyme Fire Department must be prepared to meet the challenges of structural fires and rescue emergencies as well as brush and forest fires in the town's woodlands. There was a time when the majority of responses were to extinguish grass, brush, and forest-type fires. The passage of time, increasing land development, and availability of modern technology now dictate that automatic fire alarm activations and automobile accidents with injuries account for more than one half of the department responses.

The simple act of calling the 911 emergency number to report a fire or emergency sets in motion the many evolutions of the Old Lyme Fire Department. The professional dispatchers at the Valley Shore Communications Center notify volunteer firefighters by radio and alerting pagers. Available volunteers respond accordingly - some to staff apparatus and some directly to the emergency scene. This scenario was repeated 295 times during the past year. Over three thousand firefighter hours were logged in emergency duty. In addition, Old Lyme firefighters spent over one thousand hours in training. Members are encouraged to take advantage of federal- and state-certified training as well as training conducted by in-house training officers and drills with neighboring fire departments.

Funding, provided by the Town of Old Lyme, is used for the training of personnel and to purchase and maintain fire department apparatus and equipment. The upgrading, modernization, and maintenance of the tools of our trade is a continuous effort. Equipping our personnel to safely face the challenges of emergency service, adhering to the mandates for equipment standards, complying with maintenance and testing schedules, and having a concern for the taxpayer's dollar are inherent to the operation of the Old Lyme Fire Department. In this effort town funding is supplemented with funds raised

through donations and the Firefighter's Fund campaign. Citizens can also help to facilitate our response by maintaining a driveway clear of low-hanging trees to allow for fire apparatus and a well-numbered access to your residence.

During the past year the Fire Department, in cooperation with the Old Lyme Police and the Old Lyme EMS, has placed in service a new marine unit to answer emergencies on the waters surrounding Old Lyme.

Our department continues to be one-hundred percent volunteer. The need for new dedicated volunteers is becoming a great concern and we need and welcome new members. The fire department has both firefighting and administrative duties to fit all abilities. Please consider offering your services. Visit any of the three fire stations when you see someone there and find out how you can help. Department members meet on Wednesday evenings for scheduled training sessions, work nights, and monthly business meetings.

The Old Lyme Fire Department is administered by the following elected officers.

LINE OFFICERS

<i>Chief</i>	Thomas Risom
<i>Deputy Chief</i>	Stephen Super
<i>First Assistant Chief</i>	Michael McCarthy, Jr.
<i>Second Assistant Chief</i>	Dayton Dell
<i>Captains</i>	Larry Merrill III
	Thomas Negrelli
	James Oldfield
	Tom Brown
	James Caramante
	Ethan Temple

EXECUTIVE OFFICERS

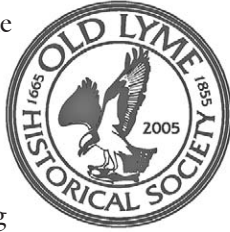
<i>President</i>	Robert McCarthy
<i>Secretary</i>	C. Ellis Jewett
<i>Treasurer</i>	John Duddy
<i>Purchasing Agent</i>	Jessica Cromarty
<i>Chaplain</i>	Mervin Roberts
<i>Steward</i>	Edward Pierpont

Old Lyme Historical Society, Inc.

Tim Griswold, Mark Lander
Co-Chairs

Meetings: Second Tuesday of every month, 4:00 P.M., at 55 Lyme St.
www.oldlymehistoricalsociety.org

The Old Lyme Historical Society had another good year. As the fiscal year ended, our award-winning work crew was finishing construction of a reading room outside our state-of-the-art archives room and the last touches were being put on the new heat and air-conditioning system. We are coming closer to having an ideal facility for our purposes.



As usual, we sponsored many activities. July saw the annual concert by the Old Lyme Town Band on the South Green (with ice cream!) and, a week later, the Midsummer Festival, of which we are a sponsor. The Handweavers Guild was there plying their trade, musician Jim Lampos entertained, and the 1929 Maxim fire truck of the OLFD attracted people to the front lawn of the Historical Society at 55 Lyme Street..

In September another successful antiques appraisal event was held at Memorial Town Hall, raising over \$1,100 for the Carol Noyes Winters Scholarship fund. Early October brought our third fall plant sale and later in the month we sponsored a fund-raising dinner at Fox Hopyard.

December had us participating in an open house for the Homes for the Holidays tour sponsored by our neighbors, the Children's Learning Center. We in turn held a cookie-decorating event for the kids from the CLC and held three book sales events for the holidays.

In February we hosted a talk and book-signing event for *Revolution in the Lymes*, written by our Trustee Michaelle Pearson and her husband, Jim Lampos.

In April the planets lined up and we hosted two people from Curtains Without Borders, a Vermont-based company that specializes in restoring painted stage curtains, such as the one that has been hanging in our hall since 1929. We like to joke

that three and a half years ago we bought the curtain from the Grange and they included the box it came in as part of the deal. The restoration involved cleaning, paint touch-up, rip repairs, and rehanging. We hope that this curtain, known as a "grand drape," is now good for another eighty years. Chris Hadsel, the head of Curtains Without Borders, gave a well-received public talk on stage curtains. Later in the month we held our annual dinner lecture at the Lymes' Senior Center, where town historian Ned Pfeiffer spoke about World War I. Next year he hopes to continue his lecture by focusing on local residents who served in "The War To End All Wars."

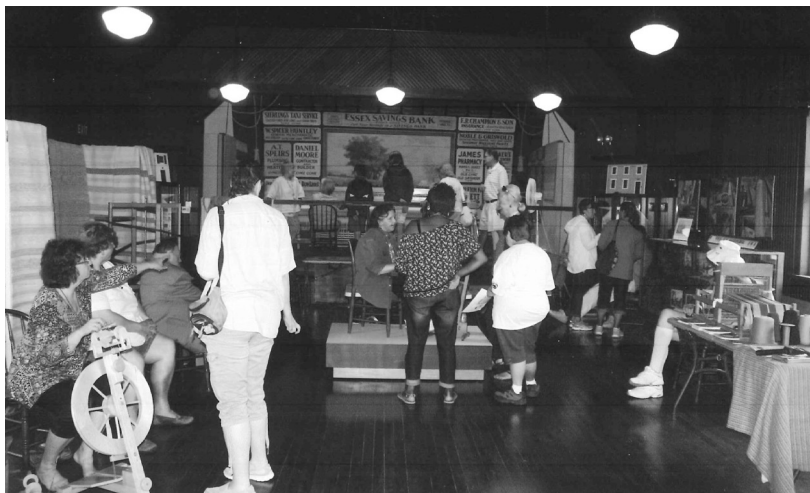
At our annual membership meeting in June, we bade farewell to trustees Julia Griswold, Sheila Wertheimer, Dolores Green, long-time secretary Martha Hansen, and founding trustees Jennifer Hillhouse and Tim Griswold, Co-Chairman. We elected new trustees, awarded the Carol Noyes Winters Scholarship to LOLHS senior Rose Datum, and presented the James Brewster Noyes Award to Steve Joncus, our pro bono architect who has given so much time and effort to our renovation efforts.

Please check our website and our Facebook page to find out what's new and next in the society, come to our events, and take a look at what we've accomplished in the building. We thank all -- residents, businesses, and the Town of Old Lyme -- who have helped make it all happen.



New archives reading room with archives storage through doorway

Old Lyme Historical Society, Inc. *(continued)*



Midsummer Festival



Rehab of stage curtain, April 2017



Antique appraisal, September 2016

Old Lyme Inland Wetlands and Watercourses Commission (IWWC)

Lew (Skip) DiCamillo
Chairman

*Meetings: Fourth Tuesdays except August and December
7:00 P.M., Memorial Town Hall*

As stated in the Old Lyme IWWC regulations, the inland wetlands and watercourses in the State of Connecticut are indispensable and irreplaceable but a fragile natural resource with which the citizens of the state have been endowed. This is especially true in our town of Old Lyme. The IWWC of Old Lyme was established in accordance with an ordinance adopted October 21, 1963 and is charged with protecting the wetlands by regulating any activity within a 100-foot protected buffer area from the boundary of a wetland or water course. This buffer area protects the wetlands from degradation via filtration of pollutants from toxins, fertilizers, erosion, and other outside sources or disturbances. In general, the regulations require any activity within 100 feet of an inland wetland or watercourse, or within 400 feet of a vernal pool, be brought before the IWWC for a permit of approval. The commission consists of seven regular members, two alternates, and an enforcement officer.

The IWWC's mission, namely the protection of these resources, is intended to preserve the benefits (e.g., recreation, clean water, flood control, and habitat for fish and wildlife) they provide for current and future generations of town residents. Town residents contemplating any activity within any area subject to regulations or who have wetlands on the property site are required to submit an application to the commission. Residents are encouraged to visit with the commission's staff at the Land Use Office in Memorial Town Hall, where applications are available. The application process will be

explained and questions answered. In this way, misunderstandings and inadvertent violation of the regulations will be avoided. In addition, the regulations themselves are posted online.

Town residents have the responsibility to insure the professionals and contractors retained by them are aware of the regulations and their requirements.

□ This past fiscal year the IWWC acted on six general applications. There were four regular permits approved, one Administrative permit approved, and one no jurisdiction. These permits were approved after extensive review and site plan changes requested by the IWWC. Each permit is accepted at the monthly meeting; at this meeting a presentation by or on behalf of the applicant is requested. Consideration of applications will typically consist of a walk of the site after the application has been accepted. In some cases, only a visit by the Commission's Enforcement Officer may be required. In order to expedite the approval process, each application must be completed in detail with a description of the activity and a well-defined site map identifying the wetlands and distances relating to the activity.

The IWWC meets on the fourth Tuesday of each month at 7:00 p.m. in Town Hall. The agenda and minutes of each meeting are posted on the town website. There are no meetings scheduled in the months of August and December for 2017. Currently, the commission has two openings for alternates. If you would like to become a member please call the Town Hall main number or visit the Land Use office in Memorial Town Hall.

Old Lyme Parks and Recreation

Don Bugbee
Director

parkrec@oldlyme-ct.gov
Meetings: First Thursdays, 7 P.M., Memorial Town Hall. All are welcome.

The Parks and Recreation Department provides a variety of programs and services for the residents and the summer visitors in Old Lyme. The office is located at 52 Lyme Street, in the lower level of the Old Lyme Memorial Town Hall and can be reached by calling 434-1605 ext 235. There is a Parks and Recreation web page that can be linked from the Town of Old Lyme's Website (www.oldlyme-ct.gov). All Parks and Recreation information is on the website and programs are listed by season. Look for us soon on Facebook as well.

The Parks and Recreation Commission is made up of seven residents. Anyone interested in participating as a commission member should contact the chairperson and the Selectman's Office. All are welcome to attend the monthly meetings.

During the late spring and summer months we provide a daily staff of lifeguards and parking lot attendants for our facilities at White Sand Beach and Hain's Park at Rogers Lake. We typically employ about forty high school and college-age residents in the summer as lifeguards, parking attendants, and day-camp counselors. Our facilities also include Town Woods Park and Cross Lane Park, hosting activities including soccer, lacrosse, tennis, basketball, baseball, and softball. We also utilize District 18 facilities throughout the year for indoor activities

including our summer day-camp, adult and youth basketball, yoga, and fitness classes. Hains Park is the home for all rowing activities in the spring, summer, and fall.

The new boathouse at Hains Park has been constructed and is in use. The basketball court has been built in a new Hains Park location and is available for use. The plans for making general improvements to Hains Park are continuing at this time. These improvements are to include a new bathroom facility, a gazebo, and making all things ADA compliant. Playground upgrades are in the planning stages for Town Woods Park, Cross Lane Park, and Hains Park.

As always, I would like to thank all of the Parks and Recreation employees, commission members, the Public Works Department, the Selectmen, the Board of Finance, and Regional District 18 for the use of facilities and the town employees for the efforts they contribute to our programs. Also and in particular, thanks goes to the dedicated volunteers who continue to give up their time for the benefit of others in our community. Your efforts are essential to many of our Parks and Recreation programs; they are appreciated, and the programs would not exist as they are without your help.

If anyone has any suggestions or program requests, please contact the Parks and Recreation Office by phone, email, or better yet... stop in.

Old Lyme - Phoebe Griffin Noyes Library

Katie Huffman
Director

khuffman@oldlyme.lioninc.org
860-434-1684
www.oldlyme.lioninc.org

The Old Lyme -- Phoebe Griffin Noyes (OL – PGN) Library continues to inspire lifelong learning and discovery in a welcoming place with exceptional resources, programs, and services.

From developing fun, interactive storytimes for infants and toddlers to hand-delivering books to homebound patrons, the library continues to provide opportunities for residents of all ages to learn and grow. Our core services include: providing access to a variety of print and digital books, audio-visual media, and research tools; assisting with technology and encouraging the development of information literacy; supporting the public school curriculum; conducting early literacy training and fostering an enduring interest in learning and reading among our youngest patrons; and offering programming that informs and engages the community.

Statistical Snapshot

- Total Circulation: 68,193 items
- Programs: 415, with a total of 8,786 attendees
- Computers: 17 public Internet computers were used 9,225 times
- Registered Borrowers: 4,077
- Reference Transactions: 4,443
- Collections: 46,185 physical and 15,569 digital items

Changes to Leadership and Staff

The OL-PGN Library bid a sad farewell to retiring Library Director Mary Fiorelli on Thursday, September 29, 2016. Mary served as the director for almost sixteen years, for a total of nineteen years of service. New Director Katie Huffman began her tenure on September 1, 2016. The library also welcomed new Children's Librarian Julie Bartley, Young Adult Librarian Nike Desis, and Circulation Assistant Kathy Sharp.

Improvements and Special Projects

- New Hours: The library expanded its hours of service by 20 percent in the spring of 2017. The new hours are Monday-Thursday 9 a.m.-7 p.m., Friday-Saturday 9 a.m.-5 p.m.
- Renewal Project: In November 2016 the Library Board of Trustees hired Lerner, Ladds, and Bartels (LLB Architects) to conduct a feasibility study for prospective improvements to the building and grounds.
- Children's Collections: Children's Librarian Julie Bartley reorganized, relabeled, and updated the children's collections to improve its usability and relevance.
- Remembering our Friends: The library was honored to help remember local resident Barbara Perkins, wife of Edward G. "Ned" Perkins, with the dedication of new bench cushions in the Children's Room.
- Young Adult Services: Young Adult Librarian Nike Desis created a new Teen Advisory Council and expanded Young Adult collections.
- Technology: The library began offering a new service that provides reminders via text message.
- Founder's Day Celebration: The library celebrated its 119th anniversary with a special reception and lecture recognizing the Ludington Family's gift of a painting depicting the original Lord homestead, site of the current library.
- Friends of the Library: The Friends raised nearly \$10,000 through the Bookworm Challenge, in addition to developing new mission and vision statements.

Old Lyme - Phoebe Griffin Noyes Library

Partnerships

As a nonprofit library, approximately 60 percent of the library's budget comes from fundraising, grants, and the library's endowment, with the Town of Old Lyme providing the remaining 40 percent. This partnership between the town and the library is an inspiring example of a public-private collaboration that enriches our community in so many ways. In addition to partnering with the town, we were fortunate to collaborate on a wide range of projects with a variety of local organizations and businesses including, but not limited to, Center School Preschool, Community Connections Network, Old Lyme Children's Learning Center, Early Childhood Education Council, Florence Griswold Museum, Lyme-Old Lyme Chamber of Commerce, Lyme's Senior Center, and Lyme's Youth Service Bureau.

Board of Trustees

The 2016-2017 Library Board of Trustees consisted of fifteen members. The executive board officers were Alan Poirier, President; Lynn G. Fairfield-Sonn, 1st Vice President; Adam L. Seidner, M.D., 2nd Vice President; Joseph Cipparone, Secretary; and David Stanland, Treasurer. The Board of Trustees meets the second Tuesday of the month, excepting December and July.



The Perkins Family dedicating the new bench cushions in the Children's Room in memory of Barbara Perkins.

Old Lyme Police

Valerie E. Rienks

Old Lyme Police Administrative Assistant

Old Lyme Statistics from July 1, 2016 to June 30, 2017

Investigations requiring a written report.....	383
Medicals	86
Narcotics Violations	8
DWIs	14
Traffic Stops	1,102
Traffic Stops Resulting in an Infraction.....	774
Traffic Accidents.....	238
Fatal Traffic Accidents	1
Disturbances.....	75
Burglaries	7
Larcenies	23
Criminal Mischief	13
Untimely Deaths	6
Sexual Assaults	2
Misc. Service Calls.....	8,140

(Patrol Checks, Visibility, Assist Citizens, Alarms, Traffic Services, etc.)

Total Calls for Service 10,097

Statistical Data was obtained through the CSP data base



Old Lyme Shellfish Commission

Mervin F. Roberts

Chair

John D. Seckla

Treasurer

David W. Redfield

Secretary (Retired Feb. 2017)

Todd Machnik

Secretary (Appointed Feb. 2017)

We are unusual, perhaps unique, among town commissions in that our finances are not part of the general fund. By statute law, we earn our keep. Presently, we have \$1,000 in a local bank. We earned it from the clam and oyster resource and we spend it only for public education and protection and enhancement of those bivalves.

Are we presently active? No. Why? The answer is that we are vulnerable to too much unsolicited help from the Hartford Department of Environmental Protection. For just one example, although we have been managing our affairs for over 100 years, we are now told that we need to hire a “clam cop” to patrol our waters if we wish to harvest, or even sample, our shellfish. This would cost us money that might better be

spent elsewhere, especially since there are so few shellfish in our waters. We could never recoup the cost by the sale of harvesting permits.

The combined age of your three commissioners is about 200 years and certainly one of us is prepared to retire if a replacement should volunteer. We meet infrequently.

David Redfield served the commission as secretary for several decades and has recently retired. His dedication is duly noted and much appreciated. Todd Machnik has volunteered to fill his slot.

Until and unless the untenable situation with the DEP is corrected we will remain in limbo while bureaucrats in distant places squabble over who gets the corner office.

Old Lyme Social Services

Jennifer Datum

Social Services Coordinator

socialservices@oldlyme-ct.gov

860-434-1605, ext. 228

It is the mission of the Town of Old Lyme Department of Social Services to enhance the quality of life and self-sufficiency of people in need of emergency non-current financial services. We provide advocacy, planning, resources, and referrals and deliver these services in partnership with public and private organizations. Services will be provided confidentially, courteously, and promptly. No one will be discriminated against due to race, color, natural origin, religion, sex, age, disability, or marital status.

The department works cooperatively with the Senior Center and LYSB and is involved with the Shoreline Basic Needs Task Force and its Hunger Action Team.

This past year I continued to help residents apply for the Connecticut Energy Assistance Program and the Renters’ Rebate for Seniors and Persons with Disabilities. The Senior Farmers Market Nutrition Program was available for residents during the summer of 2016, prior to my arrival.

I have been the Social Services Coordinator since October 1, 2016. Please contact the office at 860-434-1605 ext. 228 to schedule an appointment. Office hours at the Town Hall are generally Monday 12 – 4, Wednesday 9 – 1, and Friday 9 – 1, or by appointment.

Old Lyme Tree Commission

Joanne C. DiCamillo
Chair

Meetings: Third Thursdays, 4:00 P.M.,
Memorial Town Hall . All are welcome.

The commission is composed of seven members appointed by the board of selectmen. We assist the tree warden with the enforcement of the Old Lyme Tree Ordinance and advise the town and community groups on new and replacement plantings. We are responsible for the maintenance of all of the trees and shrubs growing on town property, and we set standards for the contractors who maintain them for us. There are currently two vacancies on the commission. No experience or prior knowledge is necessary, simply an interest in learning about the trees and a willingness to help with monitoring, preserving, and protecting them. If you are interested in joining, please contact the selectmen's office.

In May, the commission continued with its mission of investing in our town's future by planting trees. A European hornbeam (*Carpinus betulus*) and a red maple (*Acer rubrum*) were added to the landscapes on Ferry Road and Lyme Street, where old maple trees were taken down several years ago. The project was in response to requests from the adjacent homeowners who had asked the commission to replant in the town right of way. We acknowledge the following partners who helped with this project: Tree Warden Thomas Degnan for staking the locations; Planters' Choice Nursery for tagging and delivering the trees; and Bartlett Tree Experts for offloading, planting, mulching, and monitoring the trees after they were planted.

After experiencing a dry summer and fall with sustained periods of drought, we feel obliged once again, as in past reports, to mention the importance of watering newly planted trees and shrubs deeply and slowly during their first two growing seasons, April to November. Use a drip method to saturate the soil and apply mulch at a depth of 2 to 3 inches out to the dripline if possible to maintain the moisture in the soil. Be sure not to pile it on in volcano style. And don't neglect to water your established trees, woody shrubs, and evergreens. They need water, too!



Checking to be sure the root flare is at the soil grade of the planting site. (Additional photos are facing page 1 of this report.)

A REMINDER TO ALL TOWN RESIDENTS: PERMIT REQUIRED

If you are considering trimming, removing, or planting trees and shrubs on the town right of way adjoining your property, you must apply to the tree warden for a permit to do the work.

Applications are available in the Selectmen's Office and online at www.oldlyme-ct.gov.

We ask residents to report your tree concerns to the town hall. Thank you for your support and your help with keeping our community's trees healthy and safe.

Old Lyme Visiting Nurse Association, Inc.

Cynthia C. Taylor
Executive Director

oldlymevna@gmail.com
860-434-1222

The annual Flu Clinic was held on October 22, with over 350 vaccines given. We held a Blood Pressure Clinic at the high school in April with over seventy students participating.

In August we learned that Interim Health Care, who provided the town nurse for over thirty years, was closing their doors. After considering multiple proposals, we decided that the VNA of Southeastern CT was the best fit for our town and needs. Karen Veselka, the Town Nurse, has transferred over as of October 1 so that there will be continuity in care and Karen can stay the

Town Nurse.

Foot clinics are held monthly at the Senior Center, along with monthly talks by Karen at Lymewoods. Karen has been averaging more than thirty home wellness visits per month in addition to the skilled hours and the Senior Center, in many cases allowing the elderly to stay home longer.

Anybody with questions or interested in joining us, please contact Cindi Taylor at 434-1222.

Open Space Commission

Diana Atwood Johnson
Chair

dianaajohnson@me.com

http://www.oldlyme-ct.gov/Pages/OldLymeCT_Bcomm/open_space

Meetings: 2nd Tuesdays except August, 9 A.M., Second-Floor Conference Room, Memorial Town Hall.

This fiscal year was filled with local, regional, state, and national environmental concerns that impact our ability to acquire, manage, and enjoy the more than one thousand acres of land Old Lyme has been involved in protecting over the last twenty years. The impact of the proposed FRA train tracks held sway over the entire town. The open space commission participated in presentations and arguments against the proposed rail system through the heart of Old Lyme, as well as the damage to existing protected land that would have impacted many of our preserves along the I-95 corridor. The ultimate question is what any of these protective designations mean: permanently protected, national historic landmark, historic district, RAMSAR International Wetlands, if they don't actually have any teeth.

We have responded to and discussed the new challenges presented by sea-level rise and its impact on beachfront properties and the commission's land acquisition priorities. This is a concern along the entire east coast. As is quite evident in New Jersey: Whose rights are foremost, private property owners, the town, the state, FEMA? There are no clear answers,

but with the increased ferocity of storms and property damage, we must work together to find answers.

It was a frustrating year for property acquisitions. The commission spent a lot of time on two proposals that did not pan out. Managing our current properties has consumed much of the commission's time as well. We lost our first part-time Land Steward Lisa Niccolai to Vermont, but are happy to report that she has been replaced with Jamie Bastian, a young man who has been mapping downed trees, aging bridges, and flooded trails as well as clearing invasives. The commission is pleased that the town established a no-smoking ordinance on town lands that includes open space.

One of our members, Amanda Blair, has created trail displays that have appeared at the Midsummer Festival, Essex Savings Bank, and Coldwell Banker in an effort to expand Old Lyme's use of our trail systems. We thank those businesses for their support.

The picture below is from several years ago when the beavers first flooded one of only two access points to the Edward and Deborah Ames property from the east, from Whippoorwill

Open Space Commission *(continued)*

Road. Since this picture, the area is completely under water and knee boots or full-length wading gear is necessary. This is an ongoing situation and we'll update you next year. Maybe they'll move on?



Shown in the ad-joining photo taken several years ago, beavers first flooded one of only two access points to the property of Edward and Deborah Ames from the east on Whippoorwill Road. Since that time, the area is completely under water and knee boots or full-length wading gear is necessary.

We are pleased to hear from people about wildlife sightings, unusual plants, invasive plant incursions, downed trees, and other interests or suggestions you may have. Please contact the chairman at dianaajohnson@me.com.

Just as the Town Report went to print the members of the Old Lyme Open Space Commission were saddened and shocked to learn of the unexpected passing of their leader, Diana Atwood Johnson, on January 1, 2018. She was a passionate advocate for the preservation of open space and protection of the wildlife within. The immediate job of the commission will be to reckon with the huge gap caused by her loss and to insure the continuation of her vision.

Planning Commission

Harold Thompson

Chairman

Meetings: Second Thursdays except August, 5:00 P.M., Memorial Town Hall

Special Meetings are held when required, and all the meeting notices are posted in the town hall and on the town website (www.oldlyme-ct.gov). Information on the actions of the commission and meeting schedule can also be obtained from the office, which is open from 9:00 a.m. to 4:00 p.m. Kim Groves, our Land Use Administrator, is always willing to accept your application and assist you in any way.

The commission consists of five elected members and three alternates appointed by the Board of Selectmen. The commission is responsible, every ten years by State Statue, for the Town Plan of Conservation and Development, Subdivision Regulations, and special documents such as ordinances that are approved by a town meeting. The commission is also required to act on any zoning referrals; municipal developments, such as the acquisition of open space; relocation or abandonment of any public property, land,

parks, roads, schools, or public utilities; or anything owned or acquired by the town.

The Planning Commission continues to be involved in Open Space and with issues relating to open space, the impact of development on wetlands, and the installation of private roads for new developments. The commission is also looking forward with respect to land-use issues associated with the postulated rise in sea level. The Planning Commission has engaged other land-use commissions and discussions are in progress.

The Planning Commission is continuing to actively communicate with other land-use commissions and committees to address land-use concerns with proposed developments and subdivisions. This continued communication often has provided an opportunity for members of the various commissions to exchange views on the course of development in Old Lyme.

Region #18 Lyme-Old Lyme Public Schools

Ian Neviaser

Superintendent of Schools

During the 2016-2017 school year, the Lyme-Old Lyme Public Schools excelled in a variety of different areas. It is with great pride that we share this annual report with the citizens of Lyme and Old Lyme.

Again this year, the Lyme-Old Lyme Schools were recognized on both the state and national level further solidifying the notion that we provide exceptional academic programs commensurate and oftentimes superior to both public and private schools throughout Connecticut.

Lyme-Old Lyme High School's results on the Scholastic Aptitude Test (SAT), which was given in the spring to all juniors free of charge as the state-mandated assessment, placed us as one of the top districts in the state and certainly the top district in our immediate area. Programming that provided all eleventh grade students with free SAT preparation supported these results.

Mile Creek and Lyme Consolidated Elementary schools, along with Lyme-Old Lyme Middle School, saw the results of many years of commitment to the new Connecticut Standards pay off with strong results on the annual Smarter Balanced Assessment. As with the SAT, all of our schools, PK-8th grade, placed themselves in the top in all areas both locally and across the state as a whole.

In preparing our students for the future, Lyme-Old Lyme High School fully transitioned to a digital environment with the addition of

school-issued laptops for all students. Combined with our new learning management system, Canvas, our students and staff are prepared to meet the challenges of twenty-first century learning.

We continue to provide our students, staff, and communities with state-of-the-art facilities. While not exactly glamorous, we began the process of replacing our three campus oil tanks, converted almost all light fixtures to LED technology, and have utilized other cost-saving measures to reduce the burden of facilities costs in our educational budget. In order to provide a more comfortable learning environment for all, we plan to install air conditioning in all classrooms throughout the district.

In the area of finance, the towns approved a \$33,634,271 budget for the 2016-17 school year representing a 0.49-percent increase over the adopted budget for the current year. This was the lowest budget increase on record for Region #18. While the increase was exceptionally low, it was achieved through savings that did not impact any of our existing programs or services. The budget supports our commitment to continued adherence to class size guidelines, a reduction of staff to account for an enrollment decline at the elementary level, continuance of all existing academic and extracurricular activities, adjustments for anticipated changes in the special education population, adequate funding



Spanish class at Lyme-Old Lyme High School

Region #18 Lyme-Old Lyme Public Schools *(continued)*

for maintenance and repair of buildings and grounds, a scheduled replacement of technology and equipment, and program improvements that are consistent with high academic and operational standards.

The upcoming year will again be filled with many successes and challenges as we continue to

focus on student success at all levels, maintaining and improving upon the high standard we have set for ourselves and our students.

Please visit our website for more information.
(www.region18.org)



Elementary student at one of our two elementary schools that serve both students from Lyme and Old Lyme



Student in a technology and engineering class at Lyme-Old Lyme High School

Registrars of Voters

Marylin Clarke (D), Cathy Carter (R)
Registrars

Sylvia Peterson (D), Jackie Miano (R)
Deputy Registrars

The Registrars of Voters' office is located on the mezzanine level of Memorial Town Hall. Regular posted hours are Monday, 1 to 4 p.m. Special sessions are advertised in *The Day* newspaper and posted on the town's website.

Elections, Primaries, Referenda held in the 2016 – 2017 fiscal year:

- November 8, 2016 – Presidential Election (voter turnout 82%)
- May 2, 2017 – Referendum, School Budget

A voter registration session was held at the high school for students who had attained the age of 18 or would attain age 18 prior to the election date. Seventeen-year-olds who will turn eighteen on or before election day may participate in a general primary.

To register to vote in Connecticut you must meet the following criteria:

- Be a United States citizen;
- Be a resident of a Connecticut town;
- Be at least 17 years old (see above explanation);
- Have completed confinement and parole if previously convicted of a disfranchising felony.

Electors with permanent disabilities are eligible for permanent absentee ballot status.

Once this status is attained, the town clerk will send out absentee ballot applications for each election/primary held. Call the town clerk's office for details on how to apply for Permanent Absentee Ballot Status.

The canvass of electors conducted in January 2017 included those electors who had moved within town, moved out-of-town, changed mailing address to a PO Box, as well as those who had not voted in the past four elections. The purpose of the canvass is to maintain an accurate listing of active electors for use at the polls.

Voter registration applications are available at the registrars' office, the town clerk's office, and on-line at voterregistration.ct.gov. In order to register on-line, you must have a valid Connecticut Driver's License. This site may be used for new registration or changes to address, name, or party enrollment.

Registered Voters as of June 30, 2017: 5,722

Democrat:	1,740
Republican:	1,767
Unaffiliated:	2,144
Other:	71

Bonnie Reemsnyder
Chair

J. H. Torrance Downes
Senior Planner

RiverCOG, one of Connecticut's nine Councils of Governments, is governed by the chief elected officials of its seventeen member towns: Chester, Clinton, Cromwell, Deep River, Durham, East Haddam, East Hampton, Essex, Haddam, Killingworth, Lyme, Middlefield, Middletown, Old Lyme, Old Saybrook, Portland, and Westbrook. The RiverCOG is responsible for planning regional land use, transportation, emergency preparedness, environmental conservation, economic development, and homeland security. RiverCOG also provides regional services such as household hazardous waste collection.

Current officers for RiverCOG are Bonnie Reemsnyder (Old Lyme), serving as Chairperson, Michael Maniscalco (East Hampton) as Vice-Chairperson, Noel Bishop (Westbrook) as Secretary, and Carl Fortuna (Old Saybrook) as Treasurer. First Selectwoman Cathy Iino (Killingworth) and Town Manager Anthony Salvatore (Cromwell) serve, joining the RiverCOG officers on the Executive Committee.

Fiscal year 2017 was an unexpectedly eventful year for RiverCOG. Our activities included:

- RiverCOG worked with Old Lyme and other towns to have a high-speed rail bypass from Old Saybrook to Kenyon, RI that had been proposed by the Federal Railroad Administration (FRA) for improvements to the North East Corridor (NEC) rail line that runs from Washington, DC to Boston removed from the final Record of Decision. This bypass was the preferred alternative identified by the final environmental impact study: a new fifty-mile rail bypass that would cross the Connecticut River and its unique estuary, landing in the middle of the Old Lyme historic district! Old Lyme worked hard to ensure that the FRA understood the potential impact of this proposal to the affected towns and to have them remove any recommendations until a comprehensive study of the impacts could be done with the involvement of the states, towns, and the public. The final Record of Decision for NEC Future removed the proposed bypass and instead recommended a rail capacity study from New Haven
- to Providence to be run by the states of Connecticut and Rhode Island.
- We welcomed a new staff planner, Jon Curtis.
- RiverCOG was awarded an Honorable Mention for Outstanding Coordination by the Association of Metropolitan Planning Organizations for its work on the USDOT MPO reform regulatory process.
- Executive Director Samuel Gold was asked by the Secretary of USDOT to present at the National Summit on Transportation and Opportunity in Washington, DC.
- RiverCOG worked with a consultant to create a mathematical inland flooding model for the Lower Connecticut River Valley Region. The model will be used to predict areas of flood risk that may arise from more frequent intense rainfall events.
- We completed a comprehensive ridership count of bus passengers on all runs operated by 9 Town Transit and Middletown Area Transit.
- RiverCOG created a new four-year regional Transportation Investment Plan (TIP) for federal highway and transit funding.
- We completed a Case Statement and Shared Services Study for the region's land trusts, cooperating via RiverCOG's Land Trust Exchange.
- We kicked off public outreach and research for a new Regional Plan of Conservation and Development.
- We started an implementation phase of the GrowSmart economic growth strategy focused on investigating the establishment of a regional development agency.
- We began partnering with the Connecticut Tourism Coalition to further efforts to more effectively capitalize on tourism in the RiverCOG region.
- We continued household hazardous waste collections and paper shredding events and are partnering with the state on new recycling efforts on plastic wraps and bags.

Rogers Lake Authority

Dennis O. Overfield & Richard J. Smith, Sr.

Co-Chairmen

Meetings: Second Wednesdays, 7:30 p.m., Rogers Lake Clubhouse. All welcome.

The Rogers Lake Authority (RLA) meets the second Wednesday of every month at 7:30 P.M. in the Rogers Lake West Shores Association Clubhouse at 75 Rogers Lake Trail in Old Lyme. Anyone is welcome to attend.

Rogers Lake comprises 265 acres and is 66 feet deep. The water draining into the lake comes from 4,819 acres, of which 4,472 acres are natural wooded or wetlands.

The Rogers Lake Authority is composed of three representatives from Lyme and three representatives from Old Lyme.

There has finally been a dramatic improvement in the fight to control the invasive weeds in Rogers Lake as a result of the herbicide treatments. Two treatments were performed during the last fiscal year, one on July 5, 2016 and a second on June 8, 2017. The DEEP permit allows for a third treatment in the spring of 2018, and that is funded. The plan is to obtain additional guidance from DEEP for the 2018 treatment. The herbicide treatment specifically targets the invasive weeds fanwort and variable leaf milfoil. The RLA participated in the pre- and post-treatment surveys and observed the herbicide treatment. Water testing was performed in one deep and one shallow well for pre- and post-treatments for both herbicide applications and no traces of the herbicide were found. A CT DEEP grant funded 50 percent of the 2016 herbicide treatment.

The quality of the water remains very good, as can be seen with the absence of algae blooms. While 2016 was a very dry year with little rain, 2017 has been a complete opposite and there were still no algae blooms.

One of the RLA's primary concerns is boating safety on the lake. The police and DEEP have been called multiple times to deal with town and state violations. The major offenders have been the Jet Ski operators. If you observe any unsafe activities on the lake, immediately call the DEEP at 860-424-3333 or 911.

To help promote safety on the lake, the RLA provided three certification classes. The first class was a Safe Boating/Personal Watercraft/Safe Waterskiing Endorsement course on March 25, 2017. The other two courses were CPR

certificate classes held July 23, 2016 and May 13, 2017.

There have been a number of changes to the representation on the RLA. Leadership of the RLA has been changed to two co-chairmen, Dennis Overfield and Dick Smith. The RLA would like to thank Rob Roach, Mike Sicord, and Liz Sunshine for their years of service on the RLA and welcomes Nicole Krol and Toni Phillips.

The RLA is a member of the Connecticut Federation of Lakes. This organization held two conferences, one in September 2016 and a second with 120 attendees in April 2017. The take-home from attending these conferences is that Rogers Lake is healthy and has fewer issues to deal with compared to other Connecticut lakes, and we are proactive in dealing with our issues. Both conferences provided a wealth of information that was applicable to Rogers Lake.

The lake drawdown that typically occurs every leap year, enabling lake residents to perform maintenance on their waterfronts, was postponed for the fall of 2016 because of the drought. The drawdown was rescheduled for the fall of 2017. The drawdown of the lake that occurred from November to March each year is being discontinued. The purpose of this drawdown was to try to kill the invasive weeds in the shallow areas. With the lack of extended cold periods during the winter and findings from other lakes, the drawdown only allowed the weeds to establish at deeper depths.

Fishing tournaments continue to be conducted on the lake from early spring through the fall. Permits for fishing tournaments are permitted through the DEEP. DEEP stocked fish in the lake multiple times in the spring. Rogers Lake is considered one of the state's top trout-trophy lakes.

A big thank you to the board members past and present and concerned lake residents for their efforts in actively supporting the Rogers Lake Authority.

rogers-lake-authority@googlegroups.com.

http://www.oldlyme-ct.gov/Pages/OldLymeCT_Bcomm/rogers_lake/index

Judith A. Tooker
Tax Collector

We are here to collect taxes. We try to do this in a friendly manner. We are here 9 A.M. to noon and 1 to 4 P.M. weekdays.

Town Meetings

TOWN OF OLD LYME SPECIAL TOWN MEETING

Approximately 200 electors and citizens eligible to vote in Town Meetings attended the Special Town Meeting held on Monday, July 18, at 7:30 p.m. in the Middle School auditorium of Regional District #18, Lyme Street, Old Lyme, Connecticut.

First Selectwoman Bonnie A. Reemsnyder called the meeting to order.

Atty. Marylin C. Clarke was elected to serve as Moderator.

Town Clerk Eileen K. Coffee read the call of the meeting.

1. A motion was made and seconded to authorize the approval for the construction cost of State Project #104-172: Route 156 Bikeway/Sound View Improvements Project in the amount of \$877,000 as recommended by the Boards of Selectmen and Finance. A presentation of the project and related costs was made by First Selectwoman Bonnie Reemsnyder.

After many questions about the project were answered, a motion was made and seconded to move the question and bring the topic to a vote.

Motion carried

The motion to authorize the approval for the construction cost of State Project #104-172: Route 156 Bikeway/Sound View Improvements Project in the amount of \$877,000 was repeated by the Moderator who then stated the qualifications for voting.

Motion carried

2. A motion was made and seconded to authorize the acceptance of Queen Anne Court as a Town road with the condition that all cracks in the road be repaired to the satisfaction of the Town prior to the deed being filed

Motion carried

3. A motion was made and seconded to appropriate an amount not to exceed \$60,000 to cover excess costs of the Resident Trooper Department, including annual cost, DWI overtime, and other overtime cost.

Motion carried

The meeting was adjourned at 8:36 p.m.

*Respectfully submitted,
Eileen K. Coffee, Town Clerk
Recorded by Eileen K. Coffee
July 22, 2016*

Town Meetings

TOWN OF OLD LYME SPECIAL TOWN MEETING

Approximately 200 electors and citizens eligible to vote in Town Meetings attended the Special Town Meeting held on Tuesday, September 27, 2016 at 7:30 p.m. in the Lyme-Old Lyme Middle School auditorium (aka Regional District #18), Lyme Street, Old Lyme, Connecticut.

First Selectwoman Bonnie A. Reemsnyder called the meeting to order.

Atty. Thomas McGarry was elected to serve as Moderator.

Town Clerk Eileen K. Coffee read the call of the meeting.

After the call was read, Atty. Jack Collins made a motion that the call be amended to include the words "to be addressed at a Town Meeting" at the end of #1. The motion was seconded and carried.

1. A motion was made and seconded to authorize the approval of the construction cost of State Project #104-172: Route 156 Bikeway/Sound View Improvements Project in the amount of \$911,100 as recommended by the Board of Selectmen.

A motion was made and seconded to vote on item #1 by paper ballot.

Motion carried

The result of the paper ballot vote:

Yes 102 No 74

Motion carried

2. A motion was made and seconded to authorize the Town to join the Ledge Light Health District as recommended by the Board of Selectmen.

A motion was made and seconded to vote on item #2 by paper ballot.

Motion carried

The result of the paper ballot vote:

Yes 82 No 79

Motion carried

3. A motion was made and seconded to authorize the Town to grant proposed easements to the owner(s) of 178-5 Boston Post Road, Old Lyme, CT to allow access for ingress and egress, and for access to install and/or maintain

a well and septic system to serve said property, as recommended by the Board of Selectmen, as such easements are substantially shown as Easement "A" and Easement "B" on a draft map titled: "PLAN OF EASEMENT TOWN OF OLD LYME AT HAINS PARK BOSTON POST ROAD U.S. ROUTE 1 OLD LYME CONNECTICUT SEPTEMBER 19, 2016" scale 1" = 20', which map is available for public inspection during normal business hours in the Office of the Town Clerk, and to allow the First Selectwoman, in conjunction with the Town's attorney and surveyor, to prepare the terms and conditions of such easements and make such final revisions to the map, as they determine to be in the best interests of the Town.

Motion carried

4. A motion was made and seconded to authorize the Town to grant proposed easements to the owner(s) of both 178-4 and 178-3 Boston Post Road, Old Lyme, CT to allow access for ingress and egress to such properties, as recommended by the Board of Selectmen, as such easement is shown as Easement "A" on a draft map titled: "PLAN OF EASEMENT TOWN OF OLD LYME AT HAINS PARK BOSTON POST ROAD U.S. ROUTE 1 OLD LYME CONNECTICUT SEPTEMBER 19, 2016" scale 1" = 20', which map is available for public inspection during normal business hours in the Office of the Town Clerk, and to allow the First Selectwoman, in conjunction with the Town's attorney and surveyor, to prepare the terms and conditions of such easement and make such final revisions to the map, as they determine to be in the best interests of the Town

Motion carried

The meeting was adjourned at 10:00 p.m.

Respectfully submitted,

*Eileen K. Coffee, Town Clerk
Recorded by Eileen K. Coffee
September 28, 2016*

Town Meetings (continued)

WARNING OF TOWN OF OLD LYME
ANNUAL TOWN BUSINESS MEETING

Approximately 75 electors and citizens attended the Annual Town Business Meeting on Monday, January 23, 2017, at 7:30 P.M. in the Middle School Auditorium of Regional District #18, Lyme Street, Old Lyme, Connecticut.

First Selectwoman Bonnie A. Reemsnyder called the meeting to order.

Town Clerk Eileen K. Coffee read the call of the meeting.

Atty. Thomas McGarry was elected to serve as Moderator.

1. A motion was made and seconded to accept the Annual Town Report for the fiscal year July 1, 2015 to June 30, 2016, as submitted by the Board of Finance.

Motion carried

2. The teachers, aides, and students of the Lyme-Old Lyme High School Life Skills and Transition Program was chosen by the Board of Selectmen to receive the Citizen of the Year for 2016.

3. A motion was made and seconded to appropriate \$130,000.00 requested by the Board of Selectmen for a LED Light project, by which all street light heads owned by the Town of Old Lyme will be replaced with LED lights.

Motion carried

4. A motion was made and seconded to appropriate \$110,000.00 requested by the Board of Selectmen to rebuild the Academy Lane Fire Dock.

A motion was made and seconded to vote by paper ballot.

Motion to vote by paper ballot was defeated.

A motion was made and seconded to approve the appropriation of \$110,000.00 requested by the Board of Selectmen to rebuild the Academy Lane Fire Dock.

Motion carried

5. A motion was made and seconded to appropriate \$33,000.00 requested by the Board of Selectmen for the purchase of a Ford Explorer for the Town's Public Works Department (to replace a 2003 Ford Expedition). First Selectwoman Bonnie A. Reemsnyder explained that the unspent balances from the completed

salt shed (\$26,000.00) and Public Works garage floors (\$8,000.00) will be transferred toward the purchase price.

Motion carried

Respectfully submitted,
Eileen K. Coffee, Town Clerk
Meeting adjourned at 8:05 P.M.
Recorded by Eileen K. Coffee, Town Clerk
January 24, 2017

OLD LYME REFERENDUM
TUESDAY, MAY 2, 2017

The following is the official report of the May 2, 2017 Referendum ballot results on the question of whether the sum of \$33,630,000 should be appropriated for Regional School District 18:

Number of Ballots Cast:	360
Voted YES:	271
Voted NO:	88
Number Voting as ABSENTEE:	2
Number Voting IN PERSON:	358
Number of Property Owners voting:	4
Number of Registered Voters voting:	356

Respectfully submitted
Lawrence I. Peterson, Jr.
Moderator

Town Meetings *(continued)*

TOWN OF OLD LYME ANNUAL BUDGET MEETING

Approximately 60 electors and citizens attended the Annual Budget Meeting on Monday, May 15, 2017 at 7:30 P.M. in the Lyme Old Lyme Middle School auditorium of Regional District #18, Lyme Street, Old Lyme, Connecticut.

1. The adoption of the Budget for the fiscal year July 1, 2017 through June 30, 2018, as recommended by the Board of Finance.

Motion carried

2. A proposal that taxes in the Town of Old Lyme on Real Estate and Personal Property shall be paid in two (2) equal semi-annual installments, the first payment being due on July 1, 2017 and the second payment on January 1, 2018, provided that any such tax of less than \$100.00 will be due in full in one payment in July 2017, and provided that taxes in any amount owed for vehicles on the Supplemental List shall be made in one payment due in January, 2018.

Motion carried

The meeting was adjourned at 8:20 p.m.

*Respectfully submitted,
Vicki Urbowicz
Assistant Town Clerk
Recorded by Vicki Urbowicz
May 19, 2017*

Timothy C. Griswold
Treasurer

The financial results for the Town of Old Lyme year ending on 30 June 2017 were again very strong. The budget for total revenues was \$35,208,538 but the actual revenues were \$35,426,540, so there was a favorable variance of \$218,002. The budget for expenditures was \$35,208,538 but the actual expenditures were \$34,695,227, so there was a favorable variance of \$513,311. The town's undesignated surplus (our "rainy day" fund) increased from \$7,857,179 at the beginning of the fiscal year to \$8,606,041 at the end of it. The undesignated surplus stands at 24.8 percent of the actual fiscal year 2017 budget; this is an extremely healthy surplus.

Another indication of financial health is the town's tax collection rate. At the end of fiscal year 2017, the town's tax-collection rate stood at an excellent 98.6 percent.

It is important to note that the town now receives about only 1.8 percent (about \$653,000) of its total revenue (about \$35 million) from recurring grants from the State of Connecticut. Of the \$653,000, \$247,500 is the education cost-sharing grant; we have seen that the governor seeks to reduce this grant to zero. In addition, the governor wants to force Connecticut municipalities to pay 33 percent of the teachers' state pension expense, which, in the case of Old Lyme, could amount to about \$1 million. This pension was created by the State of Connecticut; it has been managed (poorly) by the state and, not surprisingly, it is woefully underfunded. We must fight hard against having the municipalities become responsible for this pension expense.

Lyme and Old Lyme together constitute Regional School District 18. The division of the operating expenses of the school district are apportioned between the two towns based exclusively on the ratio of students from each town to the total of all students. As of April 2016, there was an average of 1,362 students in the district: 284 from Lyme and 1,078 from Old Lyme. Accordingly, based on this student-count ratio, Lyme's share of the school's \$33,470,376

budget (before accounting for estimated receipts of \$142,400) is \$6,942,304 (20.8 percent), and Old Lyme's share is \$26,385,655 (79.2 percent). Old Lyme's net school budget (after accounting for Old Lyme's \$819,700 share of the District's FY 2015 fund balance) represents 75.6 percent of the total town budget. A major concern to Old Lyme and to all Connecticut towns is the declining enrollment trend. In Regional School District 18, the FY 2016 enrollment of 1,362 is forecast to decrease to 1,061 in FY 2021 – a drop of 272 students over 4 years. We know that the district's costs will not decrease in tandem with declining enrollment, so this will have an impact on future town budgets.

The low interest rate environment continued during fiscal year 2017, and it continued to be a challenge to invest money with a reasonable return. However, on the borrowing side year, we enjoyed the benefit of the June 30, 2016 refinance of the Town Hall renovation bonds at a rate of 1.44 percent. The town originally bonded \$4,200,000 in October 2010 and the balance is \$2.45 million with a maturity date of September 2024. While Regional School District 18 is a self-standing organization, the Towns of Lyme and Old Lyme are responsible for the sum of the school bonding, which presently totals \$31.2 million. Old Lyme's share of this debt is \$24.8 million. While these amounts sound very large, they are well within the debt levels specified by our auditors, and the town continues to enjoy a Standard and Poors bond rating of AAA, which is the highest rating available. S&P justified the rating based, in part, on the very strong household income levels in town and the town's consistent operating performance - with strong reserves and a relatively low level of town debt.

I thank the town's Director of Finance, Nicole Stajduhar, and her assistant, Amy Jensen, for the consistently excellent work they perform. Nicole is a Certified Public Accountant and was the town's auditor, so she is well prepared to handle her multifaceted job.

Water Pollution Control Authority

Donna Bednar
Vice Chairman

WPCA Coastal Wastewater Management Plan Update, October 2017

The revised recommended coastal wastewater management plan includes Sound View Beach and Miscellaneous Town Area B and does not include a final recommendation for Hawks Nest Beach. The Hawks Nest sub area is being investigated through an additional groundwater-monitoring program, the first phase of which is now complete. The existing wells in the Hawks Nest sub area were located and determined to be in good physical condition.

To prepare the wells for data logging they were flushed to remove accumulated debris so that the well would better represent groundwater conditions. An additional well was installed near Shore Road/ CT 156 at the request of CT DEEP to fill a perceived data gap within the sub area. The well network was used to determine both groundwater levels and the direction of groundwater flow within the sub area. The results from the phase 1 study show that the groundwater table fluctuated from about 2 to 15 feet during the April to May data collection timeframe. The collected data infers that groundwater flow generally followed topography and moved from the Hawks Nest sub-area (north) to Long Island Sound (south). The purpose of this initial phase of data collection was to determine which existing wells will be used and the location of additional wells necessary for the second phase of the study, water quality monitoring.

The phase 1 study suggests three data gap sub areas in order of decreasing priority. West End Drive (high priority) is the southwestern portion of Hawks Nest and is not currently represented in the monitoring well network. Installing wells in this area is necessary to determine if West End

Drive is hydraulically connected to the rest of the Hawks Nest sub area or if it is its own localized flow system. In addition, expanding the network of monitoring wells into this area would allow evaluation of the quality of the groundwater flowing into Long Island Sound. The north/northwestern data gap sub area (medium priority) is south of CT 156 to Liberty Street. Additional monitoring wells in this area would confirm the direction of groundwater flow and additionally provide groundwater quality data for this sub area. The central Hawks Nest data gap sub area (low priority) is south of Liberty Street to just north of Avenue A. This area is a topographical low point in the study area. The value of additional wells in this area would be to further validate the direction of the north-to-south groundwater flow and to evaluate the quality of the groundwater in that sub area.

The WPCA, with oversight and guidance from the CT DEEP, will determine what additional wells to install prior to commencing Phase 2, the water quality sampling and testing protocol portion of the groundwater-monitoring program. A final report of the results from the groundwater-monitoring program will be shared with the residents of Old Lyme and used by the CT DEEP to generate a recommendation for a wastewater management plan for the Hawks Nest sub area.

This work is eligible for 55 percent clean water funds reimbursement. The WPCA with Woodard and Curran will immediately begin to develop a schedule to perform the work.

The CT DEEP is reviewing the draft coastal wastewater management plan and working with the Office of Policy Management to refine the document. Although the delayed response from CT DEEP is lengthening our timeline this should not be a problem.

Zoning Board of Appeals

Judy McQuade
Chairman

Meetings: Third Tuesdays except August & December, 7 P.M., Memorial Town Hall

The standards that guide and limit the Zoning Board of Appeals are the Connecticut General Statutes. Acting in a quasi-judicial capacity, the board hears appeals for variances from the zoning regulations and appeals from decisions of the zoning official. For a variance to be granted, unusual hardship or exceptional difficulty due to the unique characteristics of the property must be shown and only if it is in harmony with the general intent and comprehensive plan of zoning put forth by the town.

This year, 7 regular meetings and 1 special meeting were held. There were 7 cases heard with 7 applications for variances granted. There was 1 appeal of a decision of the zoning enforcement officer that was heard and continued at 2 regular meetings with decision to uphold the zoning officer's ruling decided at a special meeting.

I'd like to remember the passing of June Speirs in February 2017. She had been a very long-serving member of the Zoning Board of Appeals, eventually becoming its chairman for many years. Her hard work and dedication to this board and to the town was exemplary and will be long appreciated and remembered.

Thank you to all the full members of the board: Mary Stone—Vice Chair, Kip Kotzan—Secretary, Karen Conniff, and Nancy Hutchinson, as well as alternate members Marisa Hartman and Harry Plaut. I'd also like to thank Arthur Sibley, who resigned in October 2016, for his many years of service as a full member of this board. Thanks also to our clerk, Kim Barrows, and our zoning official, Keith Rosenfeld, for their time, commitment, and dedication to the board and the town.



A Tribute to June B. Speirs

June Speirs, a woman well known for her years—nay, DECADES—of community service, passed away on February 19, 2017. When Old Lyme's Board of Selectmen awarded her Citizen of the Year in 2005, the certificate even

stated that it was such involvement that actually DEFINES our community and was synonymous with her very name! That award was signed by then-First Selectmen Timothy Griswold, Arthur "Skip" Sibley, Jr., and Bonnie Reemsyder.

Although not a native "Old Lymer," she moved here in 1949 when she married Jack Speirs. The Citizen of the Year award stated that "her motivation was concern for the town and her desire to 'preserve the reasons why people come here.'" Surely SHE would have been actively fighting that high-speed train that threatened our town, and she was no doubt cheering us on in spirit!

June got involved with the local League of Women Voters; as a member of this group, she became a proud delegate to an Equal Rights Amendment (ERA) convention in San Francisco! She was active in the Republican Women's Club and a longtime member of Old Lyme's Republican Town Committee, chairing its nominating committee for fifteen years. In 1975 she was the Republican nominee for First Selectman, utilizing the catchy slogan of "June in November." Though she was not elected, she DID become "June in January" with the receipt of the Citizen of the Year award -- equally catchy, and also alliterative!

June was appointed to the Old Lyme's first pension committee, serving as its vice chairman from 1974 through the early 1980s.

June's name is most often associated with the Old Lyme Zoning Board of Appeals, to which she was first elected in 1967. She served as its chairman for twenty-seven years and had a reputation for careful and persistent work; she was active in the organization until November 2009.

Zoning Commission

Jane Cable

Chairman

Meetings: Second Mondays except August, 7:30 p.m., Memorial Town Hall. All welcome.

As authorized by the Connecticut General Statutes, the Zoning Commission first drafted zoning regulations in 1941 in order to promote the health of Old Lyme residents and provide for orderly and appropriate land development. During the past year, the commission held public hearings on site plans and special permits and revised the regulations to protect gravel aquifers. The zoning office issued 377 certificates of zoning compliance, and the commission heard 5 applications for special permits, including the development of the Italian-American Club building on Shore Road.

In the coming year, the commission will likely consider changes to building height regulations and the protection of our bedrock aquifers and

wells. The aquifer protection regulations were used as one reason to defeat the Federal Rail Administration's plan to build a new rail line straight through Old Lyme.

Five regular members and three alternate members make up the full commission, which meets on the second Monday of the month at 7:30 in the Town Hall meeting room. Our meetings are open to the public. No meeting is scheduled for August. Jane Cable, Jane Marsh, Gil Soucie, Alan Todd, and Paul Orzel were the regular members and Stacy Winchell and Harvey Gemme, the alternates. Alert readers will note that one additional alternate is needed, and we welcome all who apply through the Selectman's Office.

OLD LYME ALERTS, AN EMERGENCY NOTIFICATION SYSTEM

The Town of Old Lyme has launched **Old Lyme Alerts**, an Emergency Notification System.

Residents and business owners can register with their preferred contact information in order to receive messages automatically from the town about emergency or urgent situations. We can let you know if a health crisis poses a threat; if a fire or accident will restrict access to neighborhoods; and, of course, if our community needs to prepare for another impending hurricane or winter storm.

The contact information you provide is protected. It will not be used for any other purpose.

Even if you have already registered for notifications through the state system (ctalert.gov), you will want to register for local **Old Lyme Alerts**.

Register online (visit www.oldlyme-ct.gov and follow the link) or complete the form below.
Mail it or drop it off at the town hall, the Lymes' Senior Center, or the OLPGN Library.

Please print clearly

Name _____

Old Lyme Street Address _____

Mailing Address _____

How would you prefer to be contacted by the town? Please indicate your preference below, entering 1 for the best way to contact you, 2 for the second best way, etc.

Enter 1, 2, etc.

Please print clearly below

_____ cell phone texts	_____
_____ cell phone calls	_____
_____ home phone	_____
_____ work phone	_____
_____ other phone	_____
_____ personal e-mail	_____
_____ work e-mail	_____
_____ other e-mail	_____
_____ TTY device	_____

Are you interested in receiving e-mail messages about community and town-sponsored events?
Please circle: Yes No (We will send you information about subscribing to the town website.)

We Can't Contact You if We Can't Reach You

OLD LYME EMERGENCY MANAGEMENT SPECIAL NEEDS REGISTRATION FORM

In order to provide the highest level of assistance to the residents of Old Lyme, the Office of Emergency Management is asking its residents to preidentify themselves in the event of needing special assistance during an emergency.

If you, or if you know of someone who, may be in need of transportation or any other assistance during an emergency, please fill out this special needs form and return the form to: OLD LYME EMERGENCY MANAGEMENT, 52 LYME STREET, OLD LYME CT 06371. In the event of an emergency, local emergency workers contact you and provide assistance.

This information is voluntary and will remain confidential.

NAME: _____

ADDRESS: _____ APT # _____

TOWN: _____ TELEPHONE: _____

EMERGENCY CONTACT INFORMATION OF A RELATIVE OR FRIEND

NAME: _____ TELEPHONE: _____

SPECIAL DIRECTIONS TO YOUR HOME:

PLEASE CHECK ANY OF ITEMS WHICH MAY ADDRESS YOUR NEEDS

I am hearing impaired ☐ I use a TDD/TT device ☐

I am oxygen dependent ☐ I have impaired vision ☐

I depend upon electrically powered life sustaining medical equipment

Respirator equipment ☐ In-home dialysis ☐ Other _____

I have mobility concerns and rely on the use of a:

Wheelchair ☐ Walker ☐ Cane ☐ Other _____

I have a service animal or guide dog ☐ I have special dietary needs ☐

I rely on in-home health care assistance ☐ I have special prescription needs ☐

I would require special transportation in the event I had to evacuate my home ☐

I understand that this information is voluntary and will remain confidential.

SIGNATURE: _____ DATE: _____

Service Information

A Directory of Local and State Services

EMERGENCY (Ambulance, Fire, Police)**911**
Poison Control Center1-800-222-1222
Elderly Abuse Hotline1-888-385-4225

Old Lyme Municipal Agent860-434-1605
Ombudsman for the Elderly of Old Lyme
ConnPACE-ConnMAP-Information and referral for
all services for the elderly.

Estuary Council of Seniors860-388-1611
Nutrition, Meals on Wheels, Transportation, Food
Shopping, Reservations for Old Lyme Meal Site at
26 Town Woods Road.

Lymes' Senior Center 860-434-1605 x240
Senior Clubs, Support Groups, Medicare and
Income Tax Assistance, Safe Driver Education.

Transportation
EMOTS (Estuary Medical OutPatient
Transportation) Handicapped equipped,
give 24-hour notice, please860-388-1611
American Cancer Society1-800-227-2345

Old Lyme Social Services 860-434-1605, x228
Food bank, fuel assistance, food stamps, emergency
financial assistance, welfare info., renters' rebate; call
for appointment

Old Lyme Visiting Nurse Assoc. ...860-434-7808
Blood pressure, flu and pneumonia clinics, home
visits, hearing tests, blood screening.
Office Hours: 11 a.m. – 1 p.m. Monday – Thursday,
Noon – 1 p.m. Friday
24 hours860-434-9003

Valley Shore Community Health Center
Dental Services, Health Services, Medical Exams,
Healthy Start, Counseling,
Fees on Sliding Scale860-388-4433

Hospitals and Clinics
Charter Oak Walk-Ins (Flanders)860-739-6953
Lawrence & Memorial860-442-0711
Middlesex Memorial Hospital860-358-6000
Middlesex Shoreline Clinic860-358-3700
New address: 250 Flat Rock Place, Westbrook
Hospice S.E. Conn.860-848-5699

Elderly Housing
Lymewood
(Elderly Housing, Handicapped units) ..860-434-2120
Ryefield Manor (J&F Co.)860-739-9251
CT partnership for Long-Term Care . 1-800-547-3443

INFOLINE 211
Information and Referral, Crisis Counseling,
Advocacy

Medicare, Center for Medicare
Advocacy1-800-262-4414

Social Security
All aspects1-800-772-1213

Tax Relief 860-434-1605, x219
Social Services Info. & Referral1-800-443-9946

State of Connecticut
Governor's Information1-800-406-1527
State Assistance for the Blind1-800-842-4510
Department of Rehabilitation Services
(TTY/Voice).....1-860-231-8756
Handicapped Rights1-800-842-7303
Veterans' Services1-800-827-1000

Volunteer Opportunities
American Cancer Society800-227-2345
American Red Cross860-447-3248
Eastern CT Area Agency on Aging ..860-887-3561
Estuary Council of Seniors
(includes AARP Tax Aide).....860-388-1611
Lawrence & Memorial Hospital860-442-0711
Literacy Volunteers860-399-0280
Lymes' Youth Service Bureau860-434-7208
Middlesex Memorial Hospital860-358-6000
OL/PGN Library860-434-1684
Salvation Army860-443-6409
Schools
Center School.....860-434-7838
Mile Creek School.....860-434-2209
Lyme Consolidated.....860-434-1233
Middle School860-434-2568
High School..... 860-434-1651 or 1652
SCORE (Senior Corps
of Retired Executives)860-388-9508
Women's Exchange860-434-7290

Resident Beach Passes

From Memorial Day weekend through Labor Day, use of town parking facilities at Hains Park/ Rogers Lake, White Sand Beach, and Sound View requires a parking sticker. A nominal fee is charged for the seasonal sticker, available through the Selectman's Office during regular town hall hours. **NEW – Save time and renew by mail or online.**

Single Stream Recycling

Old Lyme has single stream recycling. Residents can combine all recyclable materials (bottles, cans, **plastic containers #1-7**, newsprint, magazines, household paper, cardboard—more items than in the past) together in one container. Please refer to the town website for more specifics.

You must use the **green single stream container!** Recycling is picked up every other week by Old Lyme Sanitation. Please consult the schedule on the town website: www.oldlyme-ct.gov

Town Transfer Station

Use of the transfer station on Four Mile River Road requires a sticker, which may be obtained free of charge from the Selectmen's office during regular office hours. Special fees are charged for truckloads of stumps, boulders, and brush. Fees are also charged for appliances containing freon, carpets, upholstered furniture, and tires. Hours are: Tuesday–Friday, 7:30 a.m.–3:45 p.m.; Saturdays, 8:30 a.m.–4:00 p.m.

Library / Passports

The Old Lyme-Phoebe Griffin Noyes Library, 2 Library Lane, is open Monday and Wednesday 10-7, Tuesday and Thursday 10-6, Friday 10-5, and Saturday 10-4 (October to May). From June to September the library is open Saturdays from 10:00 a.m. to 2:00 p.m. only. The library is closed on Sundays until further notice and on legal holidays. The phone number is 860-434-1684.

Visiting Nurse

Lymes' Senior Center, Town Woods Road
Telephone 860-434-7808

Around-the-clock assistance is available seven days a week from the Old Lyme Visiting Nurse Association. Karen Veselka, R.N., is available at the Lymes' Senior Center from 11 a.m. – 1 p.m. Mondays through Thursdays and noon – 1 p.m. Fridays.

Emergency Call Center (When Activated) 860-598-0120

Town Information

Emergency Telephone Numbers

Emergency Medical Fire Police 911

Emergency Call Center (when activated) 860-598-0120

Ambulance 860-434-0089

Fire (nonemergency) 860-399-7921

State Police Troop F Westbrook 860-399-2100

Town Government

The Old Lyme Memorial Town Hall, 52 Lyme Street, is open Monday through Friday from 9:00 a.m. to 4:00 p.m. Please call ahead to verify lunch hour coverage. Town offices are closed during state and federal holidays. The same schedule applies to the office of the Town Clerk. Scheduled meetings of town agencies are posted in advance at the Town Hall and posted on the website. Public hearings are advertised in advance. Agendas and meeting minutes are filed with the Town Clerk and posted on the website: www.oldlyme-ct.gov.

TOWN OF OLD LYME PHONE DIRECTORY

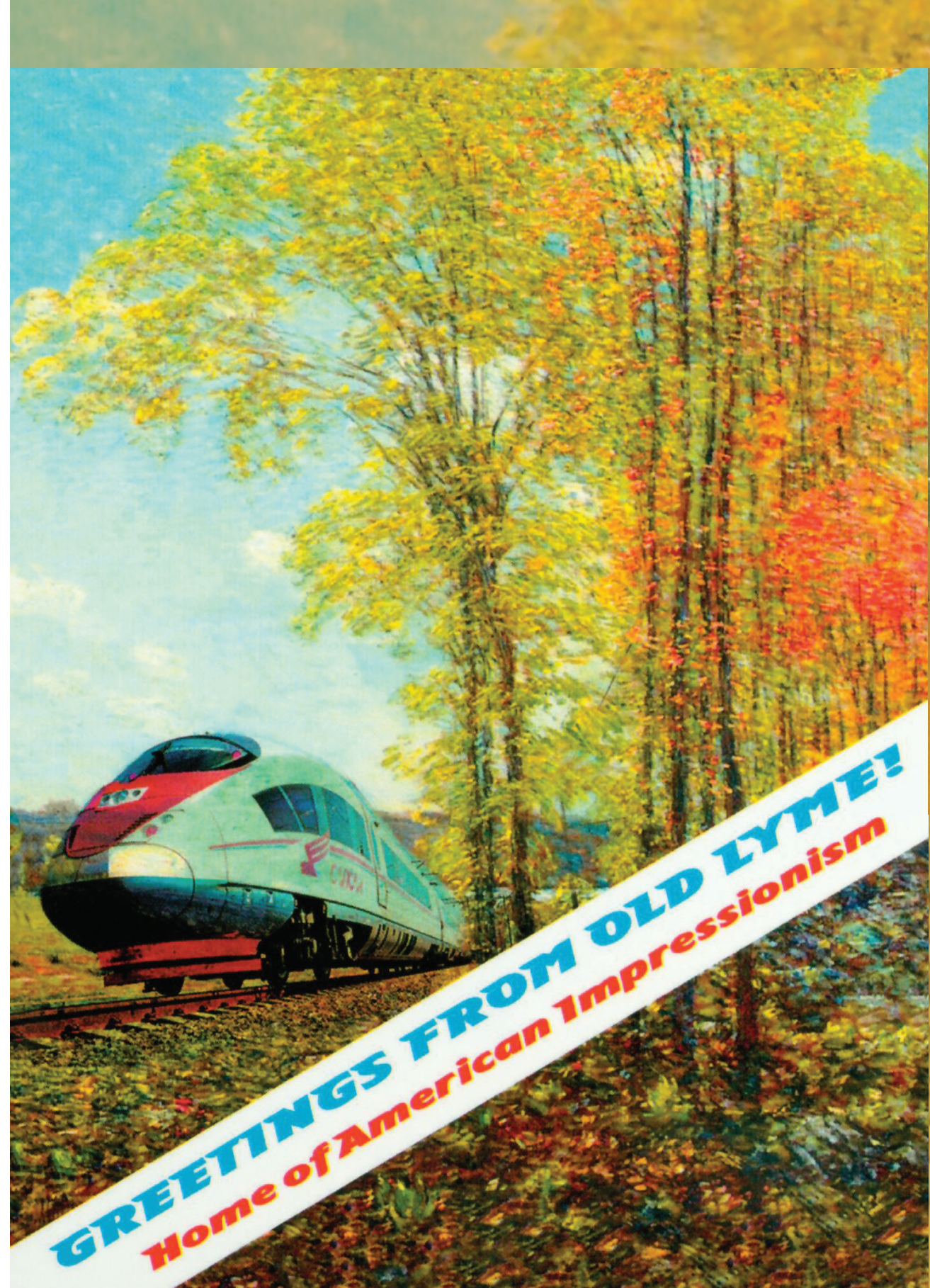
All Town Hall Offices 860-434-1605, Fax 860-434-1400, Email selectmansoffice@oldlyme-ct.gov. Please dial the 3-digit extension number of the department or person you'd like to reach.

Assessor	First Selectwoman's Office	Planning
Melinda R. Kronfeld 218	Michele E. Hayes 212	Kim Groves 234
Mickie Fraser 219	Catherine Frank 210	Registrars of Voters
Building	Health (Ledge Light Health District)	Catherine Carter or
John Flower 213	Patricia Myers 214	Marylin Clarke 226
Kathy Hall 230	Information Technology	Social Services
Emergency Management	237	Jennifer Datum 228
David Roberge 231	Land Use (Conservation, Inland Wetlands, Planning, Zoning, ZBA)	Tax Collector
Facilities	Keith Rosenfield 225	Judy Tooker 216
Phil Parcak 245	Kim Groves 234	Toni O'Connor 217
Finance	Kim Barrows 236	Town Clerk
Nicole Stajduhar 232	Parks & Recreation	Vicki Urbowicz 220
Amy Jensen 215	Don Bugbee 235	Zoning
Fire Marshal		Keith Rosenfield (ZEO/ IWEQ) 225
David Roberge 231		Kim Barrows 236
First Selectwoman		Zoning Board of Appeals
Bonnie Reemsnyder 211		Kim Barrows 236

Animal Control	ext 244
Transfer Station	ext 242
Lymes' Senior Center	ext 240
Public Works	ext 243
Police Department	860-434-7080, 860-434-1986
Fire Department	Boughton 860-434-6086
	Lyme Street 860-434-2424
	Cross Road 860-434-4130
Ledge Light Health District	860-448-4882
Parks & Recreation	Hains Park 860-434-0629
	White Sand 860-434-1570
	Cross Lane 860-434-7137
Municipal Agent for Elderly	860-434-1605
O.L. Ambulance Association	860-434-0089
O.L. Visiting Nurse Association	860-434-7808
Estuary Council Meal Site	860-434-4322

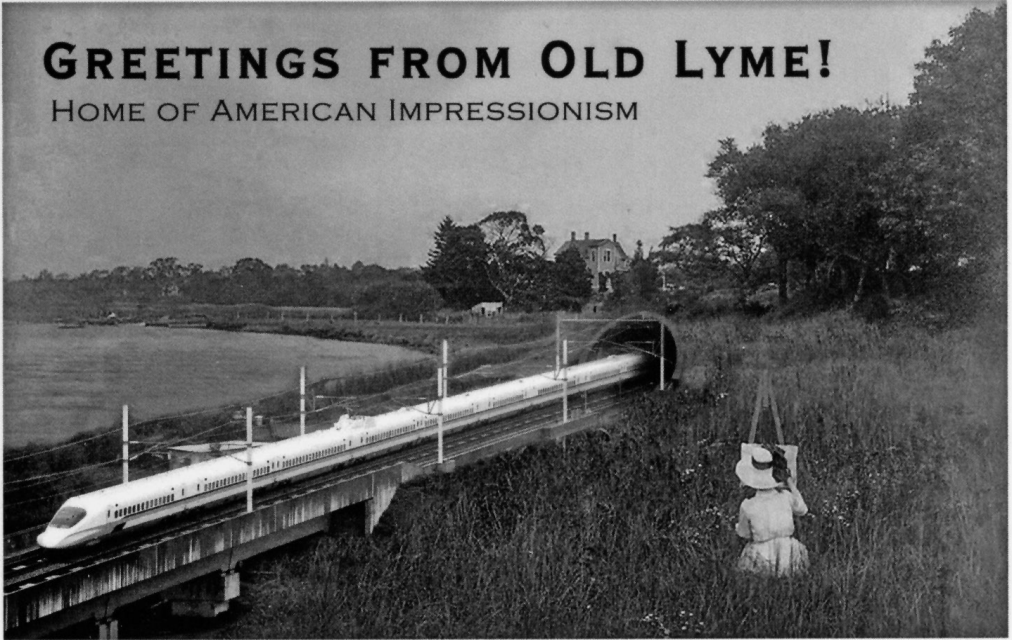
Superintendent of Schools 860-434-7238
Center School 860-434-7838
Mile Creek School 860-434-2209

Lyme Consolidated 860-434-1233
Middle School 860-434-2568
LOL High School 860-434-1651



GREETINGS FROM OLD LYME!

HOME OF AMERICAN IMPRESSIONISM



IF YOU LOVE OLD LYME, YOU'LL LOVE OUR NEW TUNNEL!

FINANCIALS

2016-2017

Town of Old Lyme, Connecticut

Balance Sheet
Governmental Funds
June 30, 2017

	General	Sound View Bike Path Improvement	Other Governmental Funds	Total Governmental Funds
<u>Assets</u>				
Cash	\$ 398,003	\$ -	\$ 1,112,410	\$ 1,510,413
Investments	9,296,850	-	500,575	9,797,425
Receivables:				
Property taxes	672,208	-	-	672,208
Intergovernmental	-	395,350	-	395,350
Other	22,705	-	8,293	30,998
Due from other funds	370,145	-	249,667	619,812
Prepaid amounts	641,325	-	-	641,325
Total assets	<u>\$ 11,401,236</u>	<u>\$ 395,350</u>	<u>\$ 1,870,945</u>	<u>\$ 13,667,531</u>
<u>Liabilities</u>				
Accounts payable	\$ 493,282	\$ 23,999	\$ 35,733	\$ 553,014
Accrued liabilities	9,850	-	-	9,850
Due to other funds	249,667	338,984	11,849	600,500
Unearned revenue	27,985	-	117,468	145,453
Total liabilities	<u>780,784</u>	<u>362,983</u>	<u>165,050</u>	<u>1,308,817</u>
<u>Deferred Inflows of Resources</u>				
Unavailable revenue - property taxes	556,121	-	-	556,121
Advance property tax collections	120,030	-	-	120,030
Total deferred inflows of resources	<u>676,151</u>	<u>-</u>	<u>-</u>	<u>676,151</u>
<u>Fund Balances</u>				
Nonspendable	641,325	-	-	641,325
Committed	-	32,367	1,399,815	1,432,182
Assigned	696,935	-	305,992	1,002,927
Unassigned	8,606,041	-	88	8,606,129
Total fund balances	<u>9,944,301</u>	<u>32,367</u>	<u>1,705,895</u>	<u>11,682,563</u>
Total liabilities, deferred inflows of resources and fund balances	<u>\$ 11,401,236</u>	<u>\$ 395,350</u>	<u>\$ 1,870,945</u>	<u>\$ 13,667,531</u>

(Continued)

The notes to financial statements are an integral part of these statements.

Town of Old Lyme, Connecticut

Reconciliation of Fund Balance
to Net Position of Governmental Activities
June 30, 2017

Amounts reported for governmental activities in the statement of net position (Exhibit A) are different from the governmental fund balance sheet. The details of this difference are as follows:

Total fund balance (Exhibit C, Page 1)	\$ 11,682,563
--	---------------

Capital assets used in governmental activities are not financial resources and, therefore, are not reported in the funds:

Beginning net capital assets	19,568,929
Current year capital asset additions	2,731,531
Depreciation expense	(469,069)
Disposal of capital assets	(218,503)

Other long-term assets are not available resources and, therefore, are not reported in the funds:

Interest receivable on property taxes	141,568
Allowance for doubtful accounts	(122,000)

Other long-term assets and deferred outflows are not available to pay for current period expenditures and, therefore, are unavailable in the funds:

Property tax receivable - accrual basis change	556,121
Deferred charge on refunding	33,551

Some liabilities, including bonds payable, are not due and payable in the current period and, therefore, are not reported in the funds:

Bonds payable	(2,455,000)
Landfill postclosure costs	(416,000)
Accrued interest payable	(10,252)
Compensated absences	(155,947)

Net position of governmental activities	<u>\$ 30,867,492</u>
---	----------------------

(Concluded)

The notes to financial statements are an integral part of these statements.

Town of Old Lyme, Connecticut

General Fund
Schedule of Revenues and Other Financing Sources -
Budget and Actual
For The Year Ended June 30, 2017

	Original Budget	Final Budget	Actual	Variance With Final Budget
Property taxes:				
Property taxes	\$ 33,094,070	\$ 33,094,070	\$ 33,417,611	\$ 323,541
Interest and lien fees	180,000	180,000	252,590	72,590
Telephone access line grant	35,000	35,000	35,031	31
Total property taxes	33,309,070	33,309,070	33,705,232	396,162
Charges for services:				
Building department	160,000	160,000	151,991	(8,009)
Health department	5,000	5,000	5,632	632
Parks and recreation department	45,000	45,000	46,310	1,310
Parking lot	95,000	95,000	110,348	15,348
Town Woods Park reimbursement	34,800	34,800	28,856	(5,944)
Planning commission	1,000	1,000	1,400	400
Selectmen's office	10,000	10,000	9,485	(515)
Town clerk's office	225,000	225,000	243,344	18,344
Assessor	2,000	2,000	806	(1,194)
Zoning commission	3,900	3,900	8,826	4,926
Zoning board of appeals	8,000	8,000	2,536	(5,464)
Inland/wetlands	3,000	3,000	2,646	(354)
Engineering/legal reimbursements	21,600	21,600	3,542	(18,058)
Historic District commission	200	200	340	140
Fire marshal	400	400	380	(20)
Senior center reimbursement	21,400	21,400	35,954	14,554
Recycling	1,500	1,500	1,335	(165)
Landfill	85,000	85,000	108,536	23,536
Parking fines	16,000	16,000	21,369	5,369
Cell phone tower lease	27,600	27,600	28,161	561
Capital Assets Proceeds	1,000	1,000	6,292	5,292
Beach stickers and permits	28,000	28,000	33,590	5,590
Pension forfeiture funds	-	-	3,071	3,071
School crossing guard	8,217	8,217	6,044	(2,173)
OLVNA reimbursement	3,000	3,000	-	(3,000)
Legal fees reimbursement	-	-	3,800	3,800
Workers comp reimbursement	-	-	633	633
Ambulance fuel reimbursement	5,000	5,000	7,225	2,225
Pension reimbursement	1,000	1,000	-	(1,000)
Registrar reimbursement	2,000	2,000	-	(2,000)
Miscellaneous	10,010	10,010	7,437	(2,573)
Beach patrol reimbursement	5,000	5,000	4,360	(640)
Total charges for services	829,627	829,627	884,249	54,622
Intergovernmental:				
LOCIP	49,358	49,358	-	(49,358)
Historic preservation grant	3,000	3,000	-	(3,000)
Emergency management/FEMA	40,000	40,000	28,087	(11,913)
Education equalization grant	-	-	247,462	247,462
PILOT - state property	147	147	146	(1)
Miscellaneous state grants	5,000	5,000	3,990	(1,010)
PILOT - colleges	2,022	2,022	2,006	(16)
Mashantucket Pequot grant	14,525	14,525	14,487	(38)
Tax relief elderly	30,000	30,000	31,288	1,288
Veterans' tax exempt	3,000	3,000	3,153	153
Town aid road	229,901	229,901	229,764	(137)
MRSA Sales Tax Sharing	1,000	1,000	79,946	78,946
Grants for Municipal Projects	1,888	1,888	1,888	-
DOT-SV Bike Path & Improvement (study phase)	-	-	40,425	40,425
State police DWI	33,600	33,600	12,865	(20,735)
Total intergovernmental	413,441	413,441	695,507	282,066
Investment income:				
Interest on investments	18,000	18,000	49,162	31,162
Total revenues	34,570,138	34,570,138	35,334,150	764,012
Other financing sources:				
Appropriation of fund balance	600,000	1,101,220	-	(1,101,220)
Proceeds from sale of capital assets	-	-	6,100	6,100
Cancellation of prior year encumbrances	-	-	43,055	43,055
Transfers in:				
Bus barn fund	38,400	38,400	43,235	4,835
Total other financing sources	638,400	1,139,620	92,390	(1,047,230)
Total revenues and other financing sources	\$ 35,208,538	\$ 35,709,758	\$ 35,426,540	\$ (283,218)

Town of Old Lyme, Connecticut

General Fund
Schedule of Expenditures and Other Financing Uses -
Budget and Actual
For The Year Ended June 30, 2017

	Original Budget	Final Budget	Actual	Variance With Final Budget
General government:				
Selectmen's office	\$ 261,908	\$ 275,028	\$ 275,025	\$ 3
Town clerk	117,162	117,162	115,870	1,292
Tax collector	104,321	104,321	98,914	5,407
Treasurer	164,076	164,076	161,308	2,768
Registrar	36,881	36,881	32,662	4,219
Information technology	91,600	91,600	76,492	15,108
Probate court	8,100	8,100	8,053	47
Assessor	130,009	130,009	120,739	9,270
Building department	106,099	106,099	103,934	2,165
Health department	202,787	202,787	184,761	18,026
Town hall	177,000	194,000	171,489	22,511
Insurance	727,850	711,620	623,087	88,533
Special deductions	407,000	407,000	349,670	57,330
Total general government	2,534,593	2,548,683	2,322,004	226,679
Boards and commissions:				
Harbor management commission	1,000	1,000	800	200
Economic development commission	20	20	-	20
Ethics commission	25	25	-	25
Water management authority	117,300	117,300	40,631	76,669
Board of finance	10,721	10,721	8,686	2,035
Flood and erosion control board	540	540	504	36
Historic district commission	4,700	4,700	4,242	458
Tree commission	16,050	16,050	11,052	4,998
Parks and recreation commission	1,522	1,522	1,185	337
Board of assessment appeals	538	938	932	6
Rogers Lake authority	16,125	16,125	14,206	1,919
Land use	290,507	290,507	209,270	81,237
Sound View	13,484	13,484	10,359	3,125
Conservation commission	4,623	4,623	357	4,266
Open space	11,300	11,300	9,576	1,724
Total boards and commissions	488,455	488,855	311,800	177,055
Public works:				
Public works expenditures	896,207	896,207	820,596	75,611
Parks and recreation:				
Parks and recreation	236,910	236,910	224,438	12,474
Town Woods Park	166,110	166,110	136,417	29,693
Fireworks/Memorial day	23,500	23,500	21,024	2,476
Total parks and recreation	426,520	426,520	381,877	44,643
Other public safety:				
Animal control	64,161	64,161	50,143	14,018
Emergency management	15,650	15,650	13,277	2,373
Valley shore communications	151,000	151,000	150,768	232
Ambulance	139,482	147,082	133,190	13,892
Total other public safety	370,293	377,893	347,378	30,515

(Continued)

Town of Old Lyme, Connecticut

General Fund
Schedule of Expenditures and Other Financing Uses -
Budget and Actual
For The Year Ended June 30, 2017

	Original Budget	Final Budget	Actual	Variance With Final Budget
Social services:				
Social service	\$ 18,747	\$ 18,747	\$ 16,570	\$ 2,177
Lyme's youth services	84,000	84,000	84,000	-
Total social services	<u>102,747</u>	<u>102,747</u>	<u>100,570</u>	<u>2,177</u>
Fire services:				
Old Lyme fire department	214,747	214,747	172,952	41,795
Fire protection	29,000	29,805	29,805	-
Fire marshal	65,696	65,696	63,582	2,114
Firemen's incentive plan	78,000	78,000	78,000	-
Total fire services	<u>387,443</u>	<u>388,248</u>	<u>344,339</u>	<u>43,909</u>
Police services:				
Resident state police	187,500	189,205	189,203	2
Municipal police	688,290	688,290	416,743	271,547
Total police services	<u>875,790</u>	<u>877,495</u>	<u>605,946</u>	<u>271,549</u>
Health services:				
Social services agencies	4,792	4,792	4,792	-
VNA	60,350	60,350	60,000	350
Total health services	<u>65,142</u>	<u>65,142</u>	<u>64,792</u>	<u>350</u>
Senior citizens' activities:				
Estuary transit district	14,400	14,400	14,329	71
Estuary services	36,547	36,547	36,547	-
Senior center	89,272	89,272	80,279	8,993
Total senior citizens' activities	<u>140,219</u>	<u>140,219</u>	<u>131,155</u>	<u>9,064</u>
Other associations	<u>347,000</u>	<u>347,000</u>	<u>347,000</u>	<u>-</u>
Sanitation:				
Municipal refuse collection	355,329	355,329	355,329	-
Single stream recycling	179,484	179,484	179,484	-
CT Resources Recovery Authority	237,000	237,000	189,069	47,931
Recycling	36,700	36,700	29,547	7,153
Household hazardous waste	27,000	27,000	16,699	10,301
Transfer station	210,742	210,742	201,043	9,699
Total sanitation	<u>1,046,255</u>	<u>1,046,255</u>	<u>971,171</u>	<u>75,084</u>

(Continued)

Town of Old Lyme, Connecticut

General Fund
Schedule of Expenditures and Other Financing Uses -
Budget and Actual
For The Year Ended June 30, 2017

	Original Budget	Final Budget	Actual	Variance With Final Budget
Chartered associations:				
Point O' Woods	\$ 13,400	\$ 13,400	\$ 13,400	\$ -
Old Lyme shores	8,600	8,600	8,600	-
Old colony beach	9,000	9,000	9,000	-
Miami beach	20,050	20,050	20,050	-
White sands beach	14,050	14,050	14,050	-
Roger's lake west shore	3,000	3,000	3,000	-
Hawks' nest beach	1,600	1,600	1,600	-
Edge Lea	2,000	2,000	2,000	-
Total chartered associations	71,700	71,700	71,700	-
Regional School District No. 18	25,565,976	25,565,976	25,565,976	-
Debt service:				
Redemption of debt	275,000	275,000	310,000	(35,000)
Interest on debt	76,188	76,188	26,070	50,118
Total debt service	351,188	351,188	336,070	15,118
Capital outlay:				
General government	310,950	420,950	401,160	19,790
Public works	50,000	215,000	214,776	224
Public safety	198,060	198,060	191,802	6,258
Public works roads and projects	350,000	317,000	300,545	16,455
Total capital outlay	909,010	1,151,010	1,108,283	42,727
Total expenditures	34,578,538	34,845,138	33,830,657	1,014,481
Other financing uses:				
Transfers out:				
Firefighters' equipment	130,000	130,000	130,000	-
Capital nonrecurring - revaluation	20,000	20,000	20,000	-
Town building improvement	5,000	5,000	5,000	-
Road improvement fund	400,000	400,000	400,000	-
Sound View improvement fund	-	234,620	234,620	-
Land acquisition	75,000	75,000	75,000	-
Total other financing uses	630,000	864,620	864,620	-
Total expenditures and other financing uses	\$ 35,208,538	\$ 35,709,758	\$ 34,695,277	\$ 1,014,481

(Concluded)

Town of Old Lyme, Connecticut
Report of Property Tax Collector
For The Year Ended June 30, 2017

Grand List Year	Uncollected Taxes July 1, 2016	Current Year Levy	Lawful Corrections		Transfers to Suspense	Adjusted Taxes Collectible	Collections				Uncollected Taxes June 30, 2017
			Additions	Deductions			Taxes	Interest	Lien Fees	Total	
Suspense	\$ -	\$ -	\$ 1,739	\$ 17	\$ -	\$ 1,722	\$ 1,722	\$ 2,414	\$ -	\$ 4,136	\$ -
2001	147	-	-	-	-	147	-	-	-	-	147
2002	131	-	-	-	-	131	-	-	-	-	131
2003	-	-	-	-	-	-	-	-	-	-	-
2004	-	-	-	-	-	-	-	-	-	-	-
2005	-	-	-	-	-	-	-	-	-	-	-
2006	1,503	-	-	-	-	1,503	1,503	747	291	2,541	-
2007	3,079	-	-	-	-	3,079	3,079	4,574	24	7,677	-
2008	3,809	-	-	-	-	3,809	3,161	4,125	24	7,310	648
2009	6,273	-	-	-	-	6,273	5,113	5,227	24	10,364	1,160
2010	11,610	-	-	-	-	11,610	6,821	3,399	48	10,268	4,789
2011	46,372	-	-	-	-	46,372	38,945	17,277	168	56,390	7,427
2012	97,785	-	123	403	16,406	81,099	52,805	26,704	264	79,773	28,294
2013	212,810	-	470	2,986	-	210,294	128,770	42,873	752	172,395	81,524
2014	406,868	-	-	37,127	-	369,741	173,663	50,733	2,553	226,949	196,078
Total Prior Years	790,387	-	2,332	40,533	16,406	735,780	415,582	158,073	4,148	577,803	320,198
2015	-	33,473,563	30,690	185,998	-	33,318,255	32,966,245	91,869	2,300	33,060,414	352,010
Total	\$ 790,387	\$ 33,473,563	\$ 33,022	\$ 226,531	\$ 16,406	\$ 34,054,035	\$ 33,381,827	\$ 249,942	\$ 6,448	\$ 33,638,217	\$ 672,208

Town of Old Lyme, Connecticut
Nonmajor Governmental Funds
Combining Balance Sheet
June 30, 2017

Special Revenue Funds										
	Social Workers' Fund	Miscellaneous Fund	Dog Fund	Private Duty Fund	Harbor Management Fund	Town Woods Park Fund	Public Building Improvement Fund	Senior Center Board Fund	Bus Barn Fund	Total
Cash	\$ 64,637	\$ -	\$ 35,706	\$ -	\$ 24,304	\$ 13,357	\$ 16,972	\$ 115,067	\$ 88	\$ 270,131
Receivables:										
Other	-	5,238		3,055	-	-	-	-	-	8,293
Due from other funds	-	108,230	5,246	46,121	-	-	1,605	-	-	161,202
Total assets	\$ 64,637	\$ 113,468	\$ 40,952	\$ 49,176	\$ 24,304	\$ 13,357	\$ 18,577	\$ 115,067	\$ 88	\$ 439,626
<u>Liabilities and Fund Balances</u>										
Liabilities:										
Accounts payable	\$ -	\$ -	\$ 4,469	\$ -	\$ -	\$ -	\$ -	\$ -	\$ -	\$ 4,469
Due to other funds	1,279	-	-	-	601	-	-	9,729	-	11,609
Unearned revenue	4,000	113,468	-	-	-	-	-	-	-	117,468
Total liabilities	5,279	113,468	4,469	-	601	-	-	9,729	-	133,546
Fund balances:										
Assigned	59,358	-	36,483	49,176	23,703	13,357	18,577	105,338	-	305,992
Unassigned	-	-	-	-	-	-	-	-	88	88
Total fund balances	59,358	-	36,483	49,176	23,703	13,357	18,577	105,338	88	306,080
Total liabilities and fund balances	\$ 64,637	\$ 113,468	\$ 40,952	\$ 49,176	\$ 24,304	\$ 13,357	\$ 18,577	\$ 115,067	\$ 88	\$ 439,626

(Continued)

Town of Old Lyme, Connecticut

Nonmajor Governmental Funds
Combining Balance Sheet
June 30, 2017

	Capital Nonrecurring	Town Building Improvement	Land Acquisition	Firefighters' Equipment	Hains Park Boathouse	Road Improvement	Total	Total Nonmajor Governmental Funds
Cash	\$ 106,948	\$ 123,441	\$ 577,147	\$ 34,743	\$ -	\$ -	\$ 842,279	\$ 1,112,410
Investments	-	-	-	500,575	-	-	500,575	500,575
Receivables:								
Other	-	-	-	-	-	-	-	8,293
Due from other funds	-	-	-	-	82,174	6,291	88,465	249,667
Total assets	\$ 106,948	\$ 123,441	\$ 577,147	\$ 535,318	\$ 82,174	\$ 6,291	\$ 1,431,319	\$ 1,870,945
<u>Liabilities and Fund Balances</u>								
Liabilities:								
Accounts payable	\$ -	\$ -	\$ -	\$ -	\$ 31,264	\$ -	\$ 31,264	\$ 35,733
Due to other funds	-	240	-	-	-	-	240	11,849
Unearned revenue	-	-	-	-	-	-	-	117,468
Total liabilities	-	240	-	-	31,264	-	31,504	165,050
Fund balances:								
Committed	106,948	123,201	577,147	535,318	50,910	6,291	1,399,815	1,399,815
Assigned	-	-	-	-	-	-	-	305,992
Unassigned	-	-	-	-	-	-	-	88
Total fund balances	106,948	123,201	577,147	535,318	50,910	6,291	1,399,815	1,705,895
Total liabilities and fund balances	\$ 106,948	\$ 123,441	\$ 577,147	\$ 535,318	\$ 82,174	\$ 6,291	\$ 1,431,319	\$ 1,870,945

(Concluded)

Town of Old Lyme, Connecticut

Nonmajor Governmental Funds
Combining Statement of Revenues, Expenditures and Changes in Fund Balances
For The Year Ended June 30, 2017

Special Revenue Funds										
	Social Workers' Fund	Miscellaneous Fund	Dog Fund	Private Duty Fund	Harbor Management Fund	Town Woods Park Fund	Public Building Improvement Fund	Senior Center Board Fund	Bus Barn Fund	Total
Revenues:										
Charges for services	\$ -	\$ 8,116	\$ 4,788	\$ 17,680	\$ 4,025	\$ -	\$ 4,329	\$ 19,943	\$ 60,000	\$ 118,881
Intergovernmental	-	27,642	-	-	-	-	-	-	-	27,642
Investment income	336	-	191	-	122	72	95	634	115	1,565
Contributions	6,606	-	-	-	-	-	-	-	-	6,606
Total revenues	6,942	35,758	4,979	17,680	4,147	72	4,424	20,577	60,115	154,694
Expenditures:										
Current:										
General government	-	6,990	-	-	-	-	105	-	-	7,095
Parks and recreation	-	5,126	-	-	-	-	-	-	-	5,126
Other public safety	-	-	-	-	1,095	-	-	-	-	1,095
Police services	-	-	-	15,107	-	-	-	-	-	15,107
Health services	4,724	23,642	-	-	-	-	-	-	-	28,366
Senior citizens	-	-	-	-	-	-	-	37,053	-	37,053
Total expenditures	4,724	35,758	-	15,107	1,095	-	105	37,053	-	93,842
Excess (deficiency) of revenues over expenditures	2,218	-	4,979	2,573	3,052	72	4,319	(16,476)	60,115	60,852
Other financing sources (uses):										
Transfers out	-	-	-	-	-	-	-	-	(60,000)	(60,000)
Net change in fund balances	2,218	-	4,979	2,573	3,052	72	4,319	(16,476)	115	852
Fund balances - July 1, 2016	57,140	-	31,504	46,603	20,651	13,285	14,258	121,814	(27)	305,228
Fund balances - June 30, 2017	59,358	-	36,483	49,176	23,703	13,357	18,577	105,338	88	306,080

(Continued)

Town of Old Lyme, Connecticut
Nonmajor Governmental Funds
Combining Statement of Revenues, Expenditures and Changes in Fund Balances
For The Year Ended June 30, 2017

	Capital Projects Funds							Total Nonmajor Governmental Funds
	Town Hall Expansion Project	Capital Nonrecurring	Town Building Improvement	Land Acquisition	Firefighters' Equipment	Hains Park Boathouse	Road Improvement	Total
Revenues:								
Charges for services	\$ -	\$ -	\$ -	\$ -	\$ -	\$ -	\$ -	\$ -
Intergovernmental	-	-	-	-	-	478,000	-	478,000
Investment income	-	144	647	4,570	3,837	-	-	9,198
Contributions	-	-	-	-	-	-	-	-
Total revenues	-	144	647	4,570	3,837	478,000	-	487,198
Expenditures:								
Current:								
General government	-	1,575	240	-	-	-	-	1,815
Public works	-	-	-	-	-	-	398,202	398,202
Parks and recreation	-	-	-	-	-	736,088	-	736,088
Other public safety	-	-	-	-	-	-	-	-
Police services	-	-	-	-	-	-	-	-
Health services	-	-	-	-	-	-	-	-
Senior citizens	-	-	-	-	-	-	-	-
Total expenditures	-	1,575	240	-	-	736,088	398,202	1,136,105
Excess (deficiency) of revenues over expenditures	-	(1,431)	407	4,570	3,837	(258,088)	(398,202)	(588,055)
Other financing sources (uses):								
Transfers in	-	41,600	5,000	75,000	130,000	-	400,000	651,600
Transfers out	(4,835)	-	-	-	-	-	-	(4,835)
Net other financing sources (uses)	(4,835)	41,600	5,000	75,000	130,000	-	400,000	586,765
Net change in fund balances	(4,835)	40,169	5,407	79,570	133,837	(258,088)	1,798	(1,290)
Fund balances - July 1, 2016	4,835	66,779	117,794	497,577	401,481	308,998	4,493	1,401,957
Fund balances - June 30, 2017	\$ -	\$ 106,948	\$ 123,201	\$ 577,147	\$ 535,318	\$ 50,910	\$ 6,291	\$ 1,399,815

(Concluded)